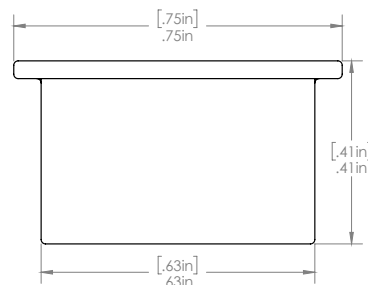


# FlexDuo Flange

SCOUT

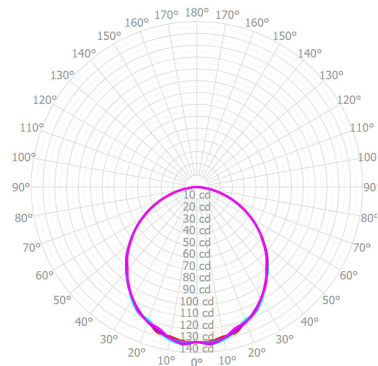


## Dimensions



## Optics

Flat Milky



## Spec Lock

- LED specially binned through forward voltage within a 3-step MacAdam ellipse for increased CCT fidelity and smooth lower end dimming.
- Mechanically fastened Rigid PCB set within an extruded aluminum channel for simple installation and total serviceability.
- Pressure fit metal pin connection for solderless in-field connection between LED boards for a seamless appearance.
- Flexible power feed injections maintain LED pitch consistency for a plethora of mounting options.
- Never a shadow, hotspot nor break in light no matter the output and run length.
- No double-sided adhesion (tape) or soldering during installation.



# FlexDuo Flange

SCOUT

## Part # Builder

|         |   |   |   |   |   |   |   |   |   |   |   |   |   |   |   |   |   |   |   |    |   |    |
|---------|---|---|---|---|---|---|---|---|---|---|---|---|---|---|---|---|---|---|---|----|---|----|
| FD-F    | + |   | + |   | + |   | + |   | + |   | + |   | + |   | + |   | + |   | + |    | + |    |
| Fixture |   | 1 |   | 2 |   | 3 |   | 4 |   | 5 |   | 6 |   | 7 |   | 8 |   | 9 |   | 10 |   | 11 |

| Fixture                     | 1 : Lens  | 2 : Intensity <sup>1</sup>   | 3 : Color Temp  |
|-----------------------------|---|--|---|
| FD-F : FlexDuo Flange       | FM : Flat Milky   | L : Low (300lm/2.2w per ft)<br>H : High (600lm/4.4w per ft)  | 27 : 2700K*<br>30 : 3000K<br>35 : 3500K<br><br>*End Feed only |
| 4 : Finish <sup>2</sup>     | 5 : Feed <sup>3</sup>   | 6 : Control  | 7 : Mounting  |
| N : None                    | EF : End Feed*<br>RF : Rear Feed<br>SF1 : Side Feed 1<br><br>*Refer to Color Temp selection | 0 : None<br>1 : 0-10 -1% Dimming<br>3 : DMX/ DALI<br>4 : POE<br>5 : ELV / MLV / Phase<br>6 : 0-10 Tuneable White<br>7 : 0-10 Warm Dim<br>8 : Lutron Hi-Lume 1% Ecosystem W/ SO-FTB<br>9 : Lutron Hi-Lume 1% 3 Wire + G<br>10 : Lutron Athena Wireless Node - RF Only<br>11 : Casambi<br>12 : nLyte<br>13 : Enlighted<br>14 : Other - Consult Factory | N : None<br>E : External                                      |
| 8 : Blind Cove <sup>4</sup> | 9 : Wire Length   | 10 : Shape   | 11 : Fixture Length   |
| N : No                      | 12"<br>24"<br>48"<br>96"<br>Custom - (Consult Factory)                                      | S - Straight<br>U - U Shape<br>L - L Shape<br>R - Rectangle<br>P - Pattern (Consult Factory)   | X' Y"   |

### Flat Milky : No Imaging - 50% Light Loss

| OUTPUT      | L   | H   |
|-------------|-----|-----|
| Lumens/Foot | 158 | 315 |
| Watts/ Foot | 2.2 | 4.4 |
| Lumens/Watt | 72  | 72  |



Driver Wiring



Installation Guide

## Specification Details

|                                | LENS   | LIGHT LOSS | VISIBLE DIODES |  | LOW                           | High    |  |  |
|--------------------------------|--|------------|----------------|--|-------------------------------|---------|--|--|
| Watts / Foot                   | N/A  |            |                |  | 2.2                           | 4.4     |  |  |
| mA / Foot                      | N/A  |            |                |  | 92                            | 184     |  |  |
| Lumens / Watt                  | N/A  |            |                |  | 136                           | 136     |  |  |
| No Lens: Lumens / Foot         | None   | 0%         | No             |  | 288                           | 576     |  |  |
| 0-10 / Lutron Athena Node      | Max Load @ 96 Watts  |            |                |  | 40 Feet                       | 20 Feet |  |  |
| DMX / DALI                     | Max Load @ 96 Watts  |            |                |  | 40 Feet                       | 20 Feet |  |  |
| Phase                          | Max Load @ 96 Watts  |            |                |  | 40 Feet                       | 20 Feet |  |  |
| POE                            | Consult Factory  |            |                |  |                               |         |  |  |
| Lutron Drivers                 | LDE1<br>Hi-Lume 1% EcoSystem. Soft On<br>Fade to Black     |            |                |  | L3DA3W<br>Hi-Lume 1% 3 WIRE+G |         |  |  |
| Color Temperatures (K) + Flux  | 2700 (100%), 3000 (100%), 3500 (115%)                      |            |                |  |                               |         |  |  |
| Max Run Length                 | 20 Feet  |            |                |  |                               |         |  |  |
| CRI                            | 90+  |            |                |  |                               |         |  |  |
| R9                             | 50+  |            |                |  |                               |         |  |  |
| MacAdams Ellipses              | 3 Steps  |            |                |  |                               |         |  |  |
| Beam Angle <sup>2</sup>        | 120 Degrees  |            |                |  |                               |         |  |  |
| IP Rating                      | IP20 - Dry Location  |            |                |  |                               |         |  |  |
| Lamp Life                      | 50,000 Hours   |            |                |  |                               |         |  |  |
| Dimming / Control <sup>3</sup> | 0-10 / POE / DMX / DALI / PHASE / LUTRON / LUTRON WIRELESS |            |                |  |                               |         |  |  |
| Operating Temperature          | -13°F to 122°F   |            |                |  |                               |         |  |  |

### FINISH

Standard Mill Aluminum Finish.  
Powder Coating to any RAL# available upon specification  
Increased pricing for powder coating.

### Warranty

2 Year Limited Warranty - Covers all Scout manufactured products.  
Default to manufactures warranty for all 3rd party components. Does not cover labor.

### ORDER DETAILS

- All fixtures come standard with starter end cap feed unless otherwise specified.
- All Scout Select Fixtures come preassembled up to 8 feet long with 8" power feed.
- Any Fixture length under 8 feet long will be made as a complete fixture.
- Any Fixture length over 8 feet long will be broken into 6 foot lengths + the balance length. A 10 Foot Fixture will be broken into 1 length @ 6 Feet and 1 @ 4 Feet.
- Fixtures daisy chain together with Scout\_Lock™ Technology.
- In situations where fixtures are longer then the maximum wattage load new power will be injected from either the side or rear. Standard Injection is side Feed 1.
- All orders come with an approval drawing. Fabrication will not begin until drawing has been signed off or waived.

<sup>1</sup> Lumens / Watt accounts nominal driver efficacy at full load

<sup>2</sup> Finish: Mill Finish comes standard. Cost Adder for Power Coating. Contact Factory for Custom RAL#

<sup>3</sup> Feed: See Feed Detail's on page 4

### LED SYSTEM

Proprietary linear LED Scout Engine incorporates premium Cree LEDs on a robust platform to achieve excellent thermal management. LEDs are placed to promote a uniform appearance.  
Available in 2200K, 2700K, 3000K, 3500K, 4000K or 5000K in 90+ CRI. LED modules and drivers are replaceable.  
Color accuracy <3 SDCM

### CONSTRUCTION

One piece extruded aluminum housing. Cast aluminum end caps.

### OPTICS

Extruded High Transmission Milky Acrylic Lens with No LED imaging. Extruded High Transmission Frosted Acrylic Lens with LED imaging.

### ELECTRICAL

Fixture comes reassembled with 8" whip.  
All Drivers are installed in remote location.  
All drivers are Universal input 120-277 VAC.  
Standard Constant Voltage drivers include 0-10V dimming preinstalled in enclosure.

### LABELS

Conforms To UL STD 2108 Certified To CSA STD C22.2 # 250.0  
Suitable for Dry or Damp Locations, indoor use only.  
ETL Control # 5011600