



SCOUT LIGHTING
Designed - Built - Shipped - New York

WEISSWALL
TUNEABLE WHITE

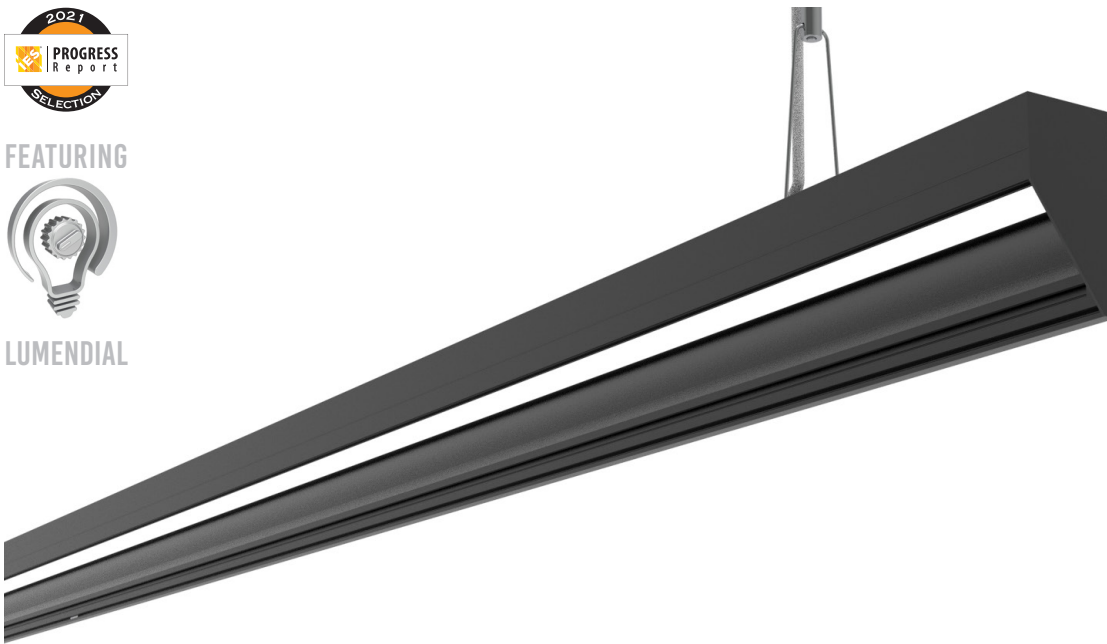
Project : _____ Firm : _____ Type : _____ Quantity: _____



FEATURING



LUMENDIAL



AMERICAN MADE



Intertek
5011600

WARRANTY

5 Years

EFFICACY

139 Lm / Wt

MACADAM

3 Step

CRI

90+

R9

50+

Features

- Fully Assembled
- Rigid Scout Engines
- Cutable to 1/2 Inch
- Shop drawings for all orders
- Easy Plug and play system
- LumenDial allows you to dial in any lumen output
- Designed for the Contractor
- Solderless Connections
- No Visible hot-spots - ever (with milky lens)
- Illuminated Corners
- Endless runs - Inject new power feeds at any point

Applications

- Perimeter Wrap Lighting
- Wall Washing
- Graizing
- Retail
- Signage

2200

2700

3000

3500

4000

5000

Part # Builder

SS-WW	+		+		+		+		+		+	
Prefix	+	Lens	+	Intensity ¹	+	CCT	+	Finish ²	+	Control	+	Mount
Weisswall		FF - Flat Frosted Visible Diodes FM - Flat Milky No Imaging OGIO Grazer Optic ASYM25 Asym Optic		SL - Sup. Low L - Low M - Medium H - High SH - Sup. High LD - LumenDial ¹		22-35K Tuneable White		W - White B - Black Custom RAL #		0 - None 1 - 0-10 2 - DMX 3 - POE 4 - Phase 5 - Lutron digital T-Series 1% 2-Channel (Quantum/Athena controls)		PH - Pendant Hung S - Surface Mount W - Wall Mount M - Magnetic Mount E9/16 - T Grid External 9/16 E15/16 - T Grid External 15/16 ST - Stem Coming Soon

¹ LumenDial : Custom Output : The Scout Engines can be programmed for any lumen output from 1 to 1,400 lumens per foot. Contact Factory for more info.

² Finish : Mill Finish comes standard. Cost Adder for Powder Coating. Contact Factory for Custom RAL#.

³ Feed : See Feed details on page 4

⁴ See Blind Cove details on page 5.

⁵ Wire Length : Standard 12"

⁶ Ordering info on page 9.





Quick Specifications

LED SYSTEM

Proprietary linear LED Scout Engine incorporates premium Cree LEDs on a robust platform to achieve excellent thermal management. LEDs are placed to promote a uniform appearance.
Available in 2200K, 2700K, 3000K, 3500K, 4000K or 5000K in 90+ CRI. LED modules and drivers are replaceable.
Color accuracy <3 SDCM

CONSTRUCTION

One piece extruded aluminum housing. Welded Steel end caps.

OPTICS

Extruded High Transmission Milky Acrylic Lens with No LED imaging.
Extruded High Transmission Frosted Acrylic Lens with LED imaging.

ELECTRICAL

Fixture come preassembled
All Drivers are installed in remote location.
All drivers are Universal input 120-277 VAC.
Standard Constant Current drivers include 0-10V dimming preinstalled in an enclosure.

LABELS

Conforms To UL STD 2108 Certified To CSA STD C22.2 # 250.0
Suitable for Dry or Damp Locations, indoor use only.

FINISH

Standard Mill Aluminum Finish.
Powder Coating to any RAL# available upon specification

WARRANTY

5 Year Limited Warranty - Covers all Scout manufactured products.
Default to manufactures warranty for all 3rd party components.

Frosted Lens : Visible Diodes - 5% Light Loss

OUTPUT	SL	L	M	H	SH
Lumens / Foot	219	388	644	1092	1273
Watts / Foot	1.6	2.8	4.8	8.3	9.8
Lumens / Watt	139	138	135	131	129

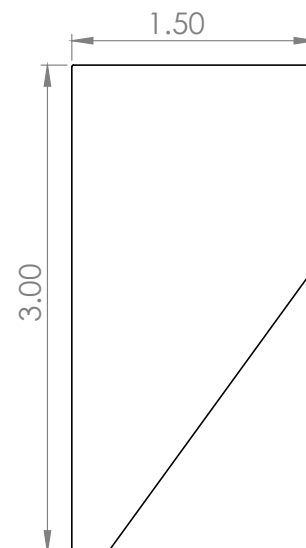
Milky Lens : No Imaging - 50% Light Loss

OUTPUT	SL	L	M	H	SH
Lumens / Foot	115	204	339	575	670
Watts / Foot	1.6	2.8	4.8	8.3	9.8
Lumens / Watt	73	72	71	69	68

Grazer / Asym Lens : 8% Light Loss

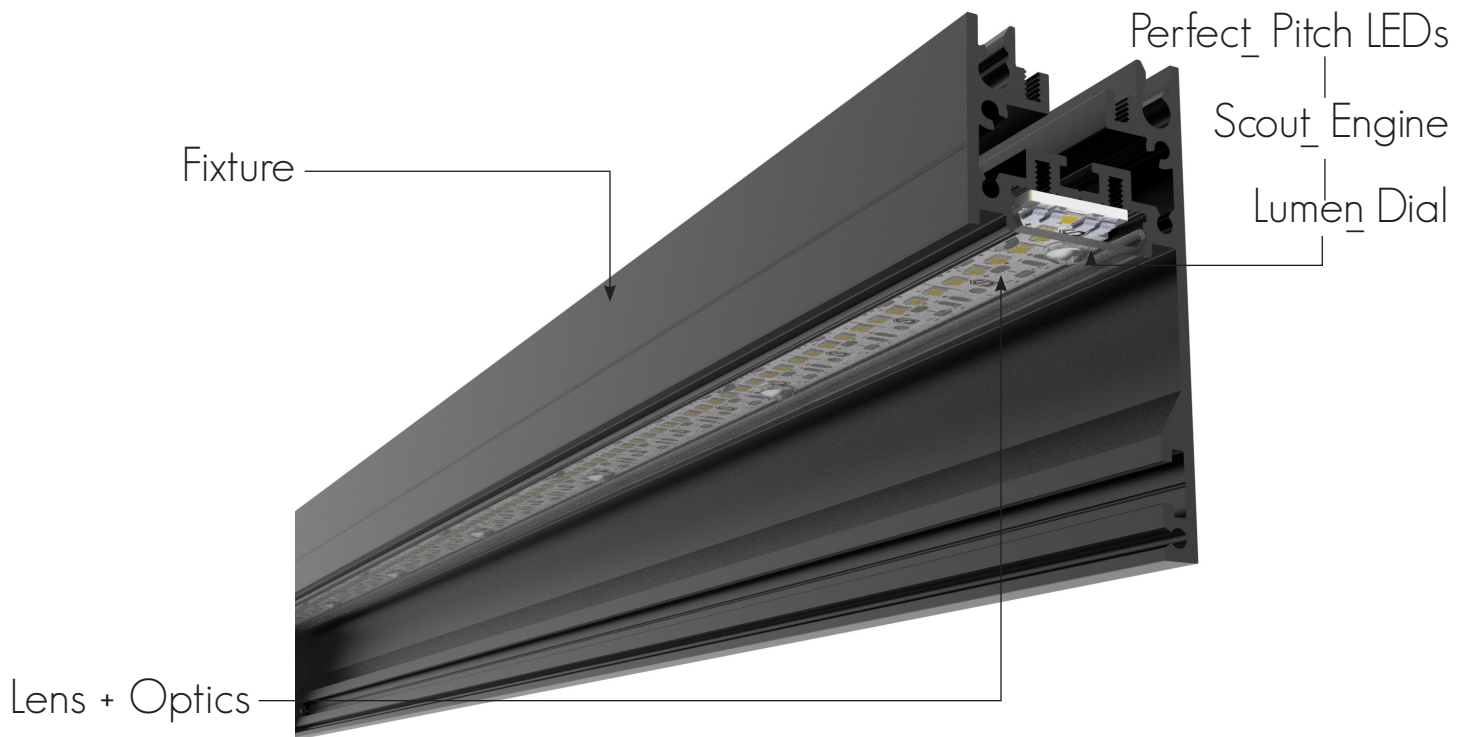
OUTPUT	SL	L	M	H	SH
Lumens / Foot	219	388	644	1092	1273
Watts / Foot	1.6	2.8	4.8	8.3	9.8
Lumens / Watt	139	138	135	131	129

Dimensions





Fixture Anatomy



Perfect_Pitch LEDS

Achieve an uncompromisable layer of architectural lighting at any intensity through LED spacing that never change with the intensity. This means no hot-spots and imaging when paired with the Milky lens.

Scout_Engine

Rigid boards Plug and Play together.

Cutttable to 1/2 Inch

Lumen_Dial

A patent pending circuit design delivers 3 separate intensities within a single engine. One engine, one pitch is the only way to simply and brilliantly bring a vision to reality.

Fixture

Designed from the ground up to be a module system.

Each fixture is 100% custom to you.
Pre assembled and cut to the 1/2 inch

We can powder coat to any finish you desire.

Scout_Lock

Developed with a straightforward installation process in mind, engine connectors quickly lock together. No tools are necessary even when housing in the Scout Select Channel.

Lens + Optics

Scout offers multiple lens options for you. Frosted lens for maximum output, Milky lens for visible hot-spot free illumination and a 10 degree grazer to make those textured walls pop.





SCOUT LIGHTING
Designed - Built - Shipped - New York

WEISSWALL
TUNEABLE WHITE

Optics



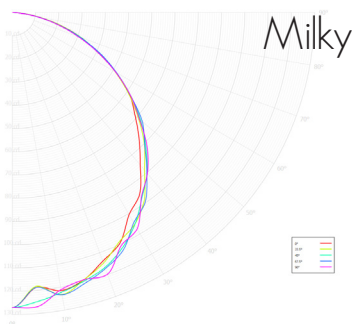
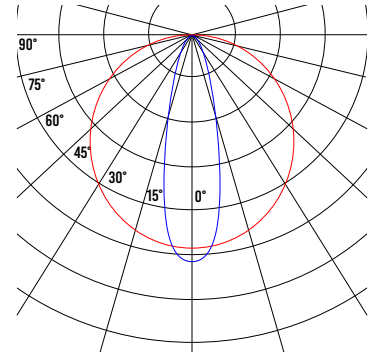
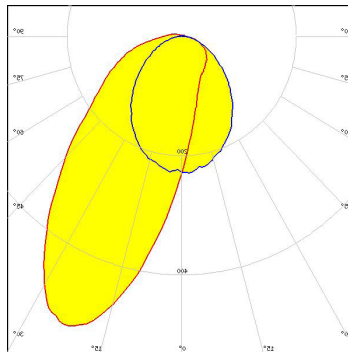
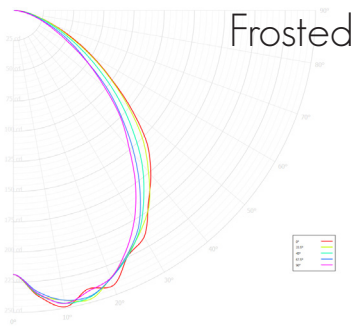
Frosted / Milky



Asymmetrical



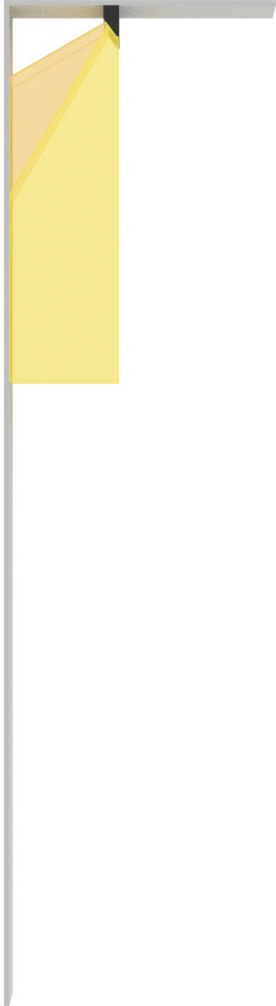
Grazer





Light Throw

Frosted / Milky



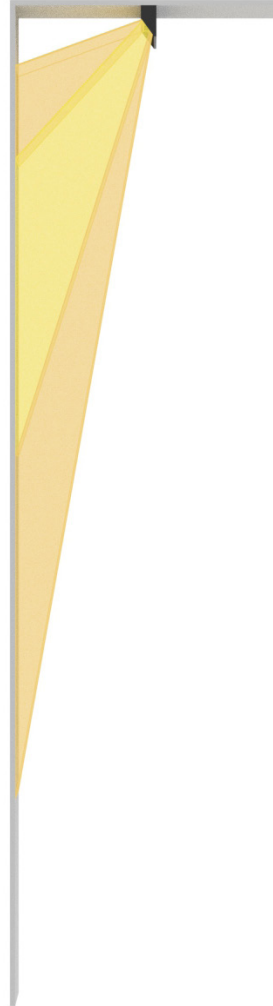
9" off of Wall

Grazer



1" off Wall

Asym 25



12" off Wall

Asym 25



24" off Wall



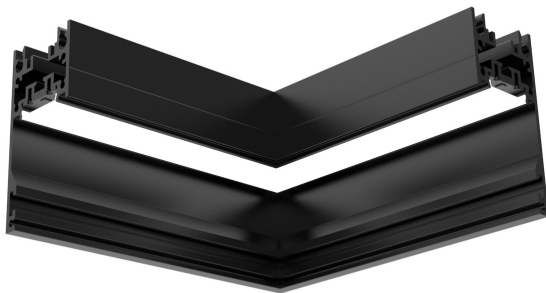


Patterns



Scout fixtures come completely preassembled.
All the installers need to do is simply slide them together.
New power feeds can be injected anywhere.
Never have a break in light!

Illuminated Corners



Illuminated Inside Corner

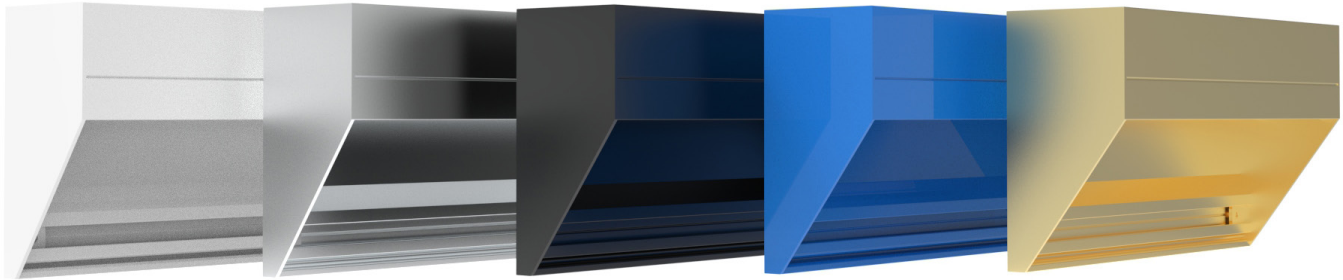


Illuminated Outside Corner





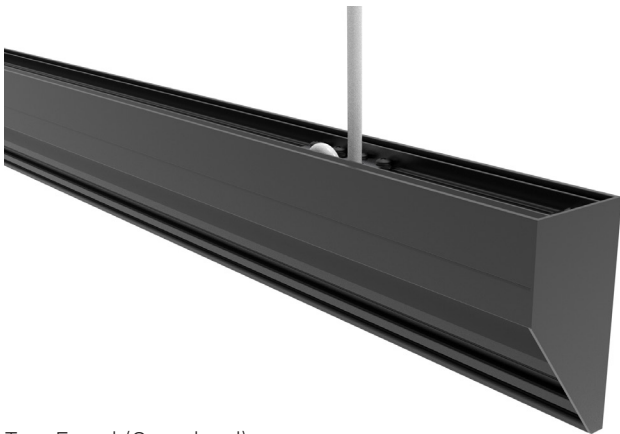
Finish



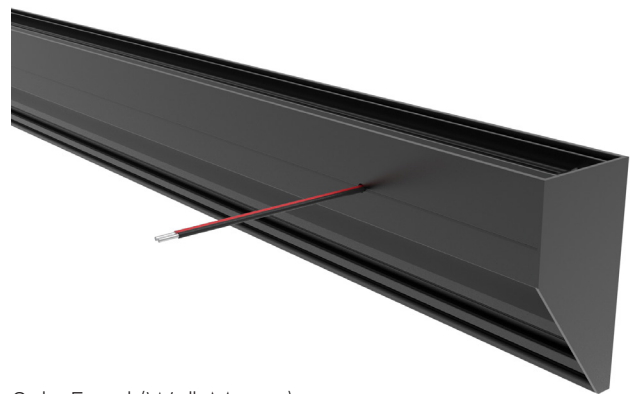
Powder Coat any Scout Fixture to any RAL #. Weisswall come standard gloss white.

Your Fixture. Your Design. Customized.

Feeds

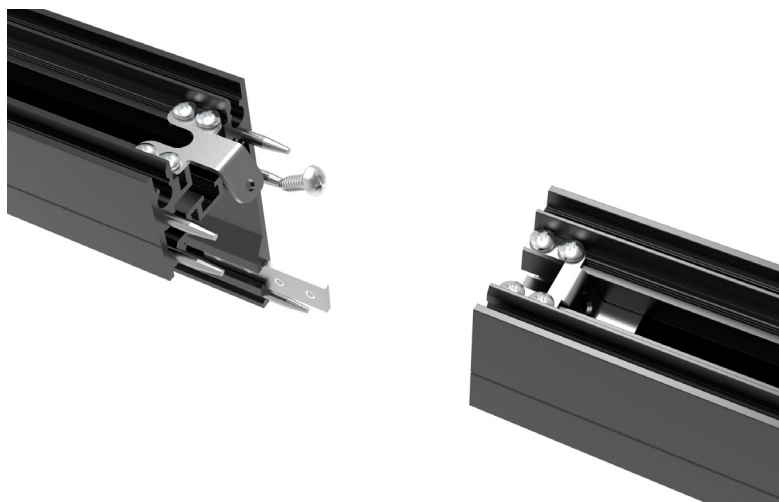


Top Feed (Standard)



Side Feed (Wall Mount)

Fixture Coupling





Mounting



PENDANT HUNG



WALL MOUNT



FLUSH SURFACE MOUNT



MAGNETIC MOUNT



9/16 T GRID MOUNT



15/16 T GRID MOUNT



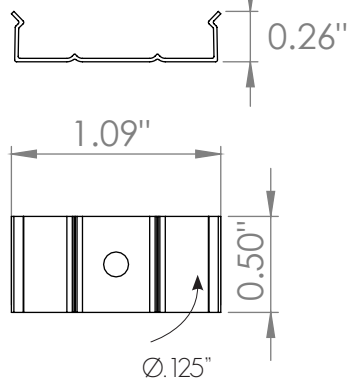


Mounting

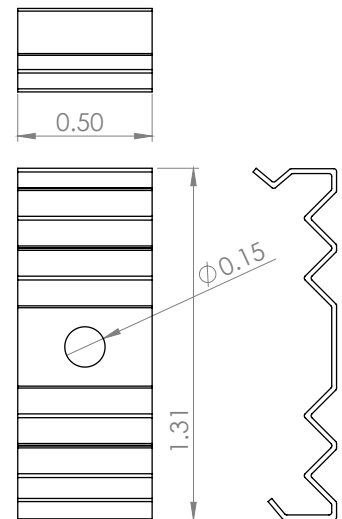


SURFACE CLIP
PART # SME

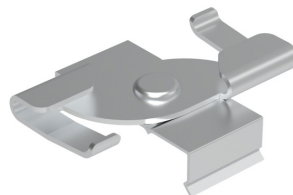
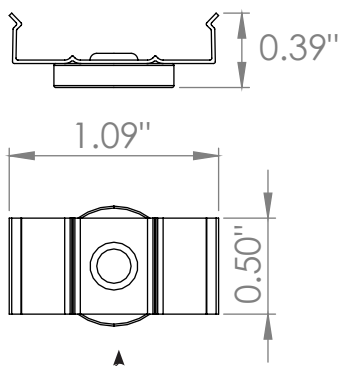
Ships with 1/2" #4 Screw
Use #1 Phillips Bit Driver



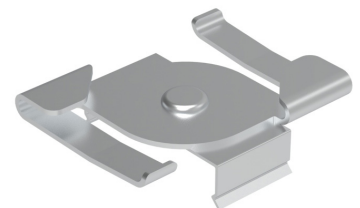
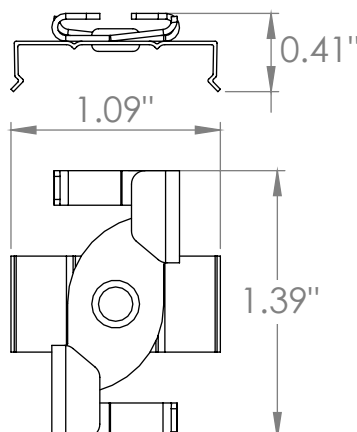
WALL CLIP
PART # WWC



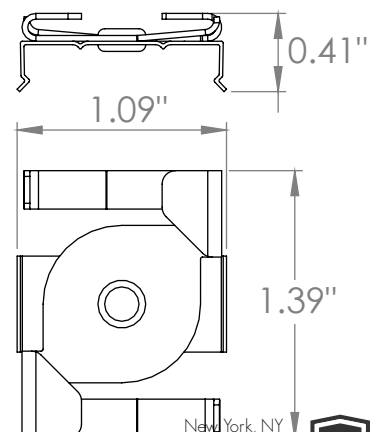
MAGNETIC
PART # SMEMAG



9/16 T GRID
PART # SMIT15/16

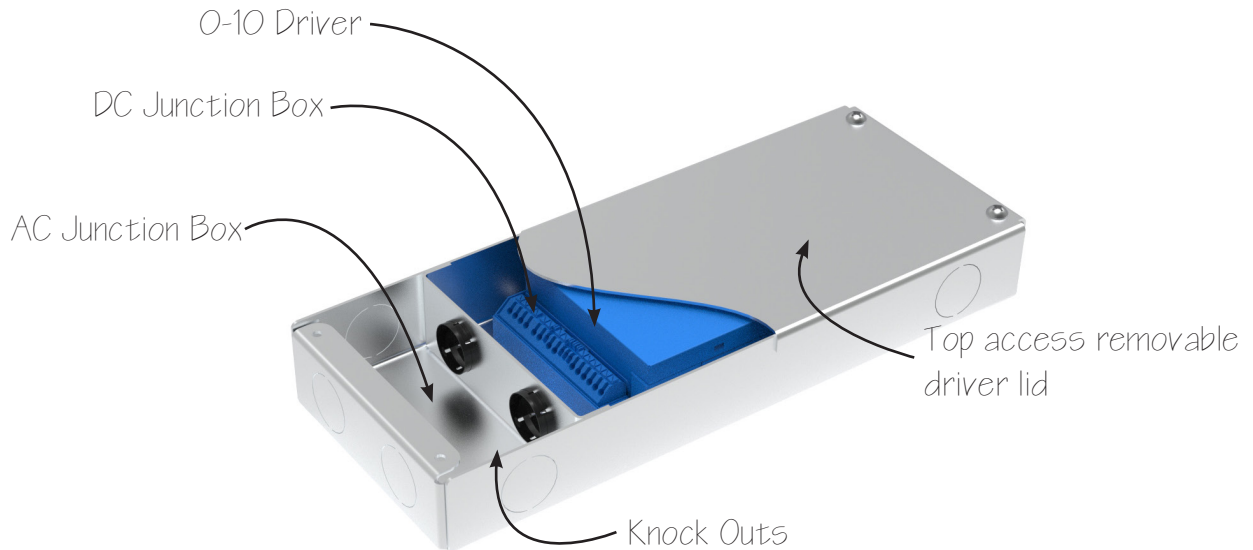


15/16 T GRID
PART # SMET15/16





Drivers



All scout drivers come preinstalled inside of NEMA rated enclosures. Our proprietary driver enclosures come with AC and DC Junction boxes and knockouts around the perimeter. Contractors can use our AC junction box to make branch circuit connections.

Max Load (2000mA)

Super Low (50mA)	40 Feet
Low (89mA)	22 Feet
Medium (149mA)	13 Feet
High (250mA)	8 Feet
Super High (300mA)	5 Feet

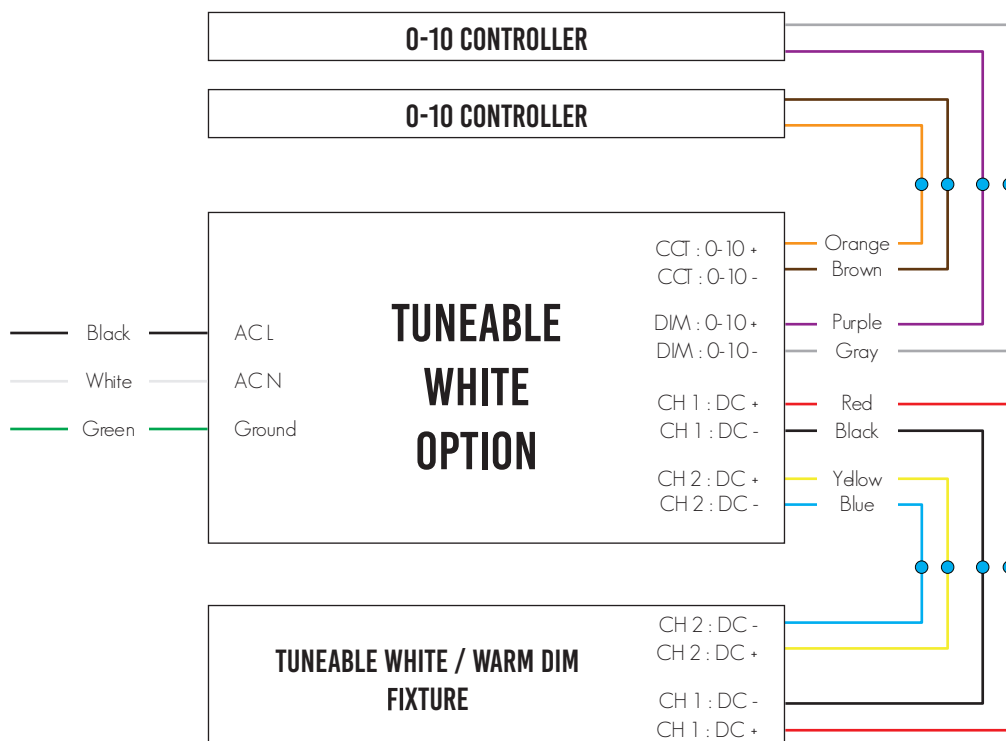
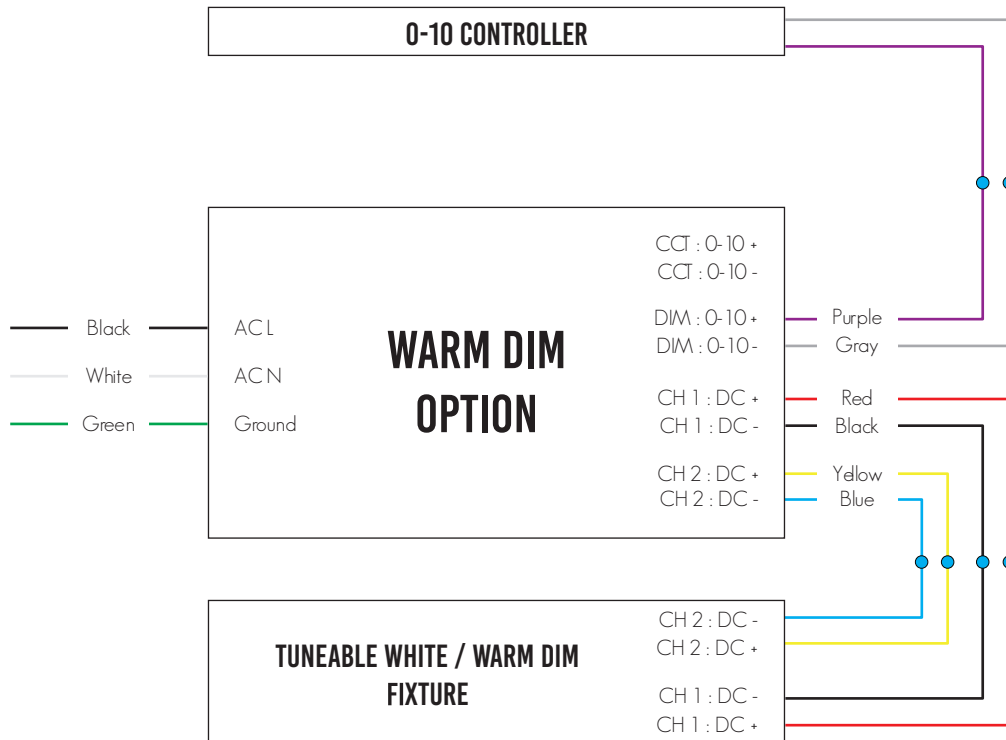
Max Distance

20 AWG	20 Feet
18 AWG	40 Feet
16 AWG	60 Feet
14 AWG	100 Feet
12 AWG	150 Feet



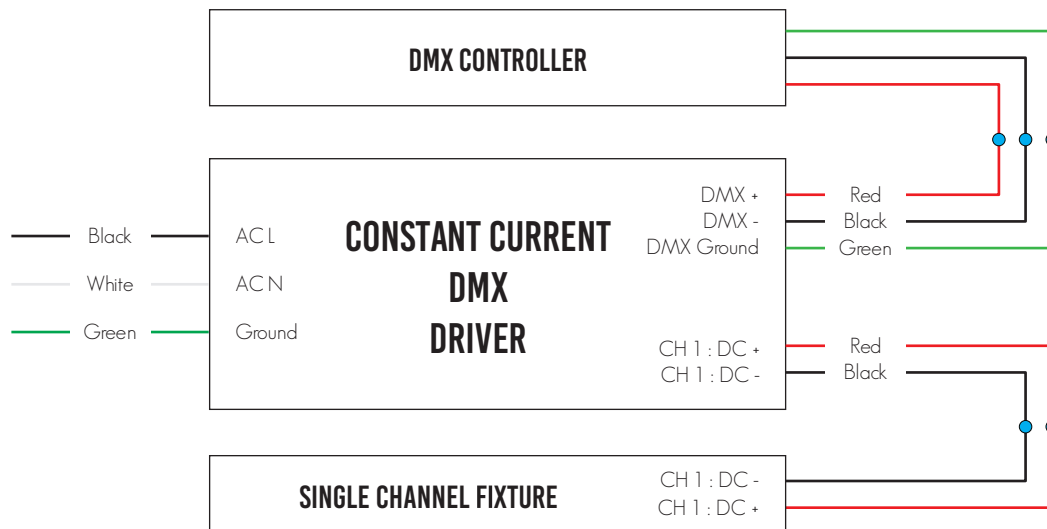
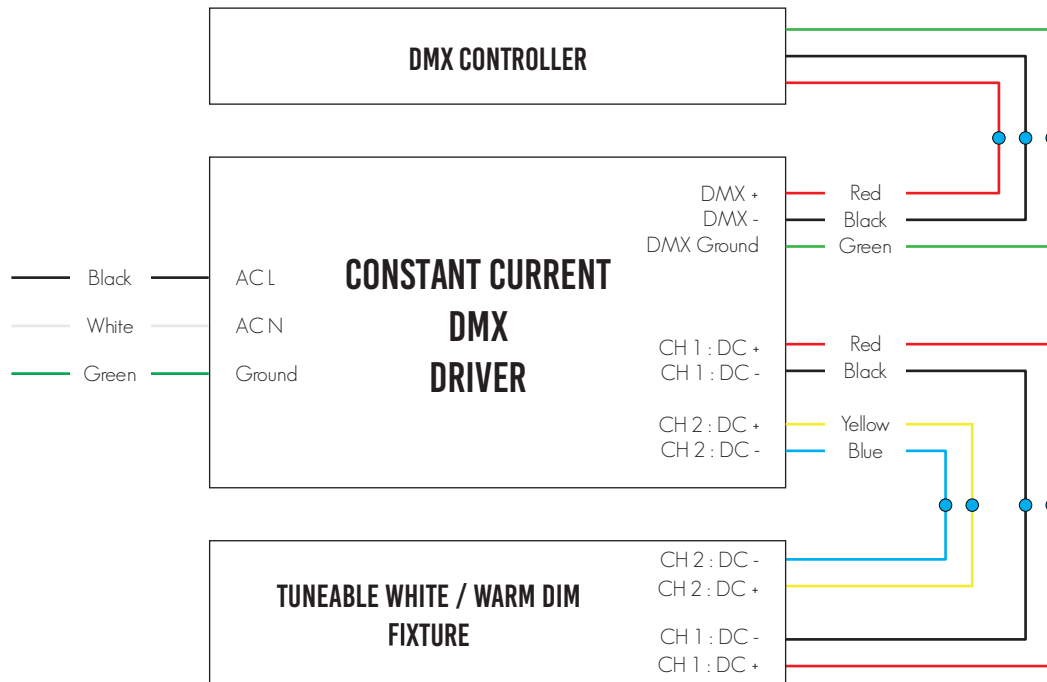


0-10 Wiring





DMX Wiring





Specification Details

INTENSITY	S. LOW	LOW	MEDIUM	HIGH	S. HIGH	CCT	LUMINOUS FLUX
Watts / Foot	1.6	2.8	4.8	8.3	9.8	2200K	82%
mA / Foot	50	89	149	256	300	2700K	100%
Frosted Lens: Lumens/ Foot	219	388	644	1092	1273	3000K	100%
Frosted Lens: Lumens/ Watt ¹	139	138	135	131	129	3500K	115%
Milky Lens: Lumens/ Foot	115	204	339	575	670	4000K	118%
Milky Lens: Lumens/ Watt ¹	73	72	71	69	68	5000K	106%
Color Temperatures (K)	2200 - 3500K						
CRI	90+						
R9	50+						
MacAdams Ellipses	3 Steps						
Beam Angle ²	120 Degrees						
IP Rating	IP20 - Dry Location						
Lamp Life	50,000 Hours						
Dimming / Control ³	0-10 / POE / DMX / DALI / PHASE / LUTRON						
Operating Temperature	-13°F to 122°F						
Warranty	5 Years						
Max Driver Load at 2A	40 Feet	22 Feet	13 Feet	8 Feet	5 Feet		
ETL	Conforms To UL STD 2108 - Certified To CSA STD C22.2 # 2500						

LUTRON

PSQ0
Lutron digital T-Series 1%
2-Channel (Quantum/
Athena controls)

Ordering Details

- All fixtures come standard with starter end cap feed unless otherwise specified.
- All Scout Select Fixtures come preassembled up to 8 feet long with 4'0" power feed.
- Any Fixture length under 8 feet long will be made as a complete fixture.
- Any Fixture length over 8 feet long will be broken into 6 foot lengths + the balance length.
I.E. A 10 Foot Fixture will be broken into 1 length @ 6 Feet and 1 @ 4 Feet.
- All orders come with an approval drawing. Fabrication will not begin until drawing has been signed off or waived.

¹ Lumens / Watt takes into account nominal driver efficacy at full load

² Beam Angle with Milky Lens

³ Not all dimmers / drivers compatible contact factory for testing





SCOUT RECOGNIZED 2021 IES PROGRESS REPORT



"Scout has released its Select Linear Accent Lighting Line as the first linear accent lighting product that is cuttable every ½-inch with the ability to burn in a specific lumen and wattage output at time of assembly. The client is able to choose from 1 to 1400 lumens per linear foot. Their proprietary boards have low-profile male / female connectors and the engines are designed with side and rear feed points every inch." - IES Progress Report

OUR PHILOSOPHY

At Scout, everything we do is driven by three simple philosophies:

- We do the job that needs to be done.
- If something isn't perfect we'll do it again, regardless of time.
- We design what we love and love what we design.

We proudly stand on the front-line of the industry - taking risks to achieve superior and simpler product. **THIS IS THE WAY OF THE SCOUT.**



LUMEN_DIAL

ANY LUMEN VALUE: BETWEEN 1 - 1,400 PER FOOT
ANY WATTAGE: BETWEEN 0.1 - 10 PER FOOT
DIALED IN TO YOUR SPECIFICATION

Scout's proprietary award-winning light engines have the ability to dial in any intensity or wattage you desire without changing a thing on the engine. We can guarantee you'll never have a hot spot or shadow again.

QUICKSHIP 
7-10 DAYS

Designed • Built • Shipped
NEW YORK

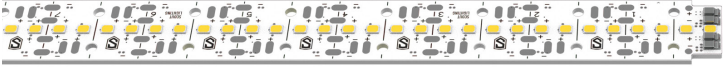




SCOUT LIGHTING
Designed - Built - Shipped - New York

WEISSWALL
TUNEABLE WHITE

THE SCOUT ENGINES - THE HEART OF EVERY FIXTURE



STATIC WHITE



TUNEABLE WHITE



RGB WHITE

SCOUTS AWARD-WINNING RIGID ENGINES HAVE BEEN EXPANDED TO INCLUDE TUNEABLE WHITE AND RGB



POWER WHERE YOU NEED IT

Our propriety patented engines feature solderless connectors and low-profile male / female connectors, enabling simple snap-together installation. Throw in the ability to inject power from either side or the rear, and we can offer you limitless runs without ever having a break in your light.

PERFECT_PITCH

