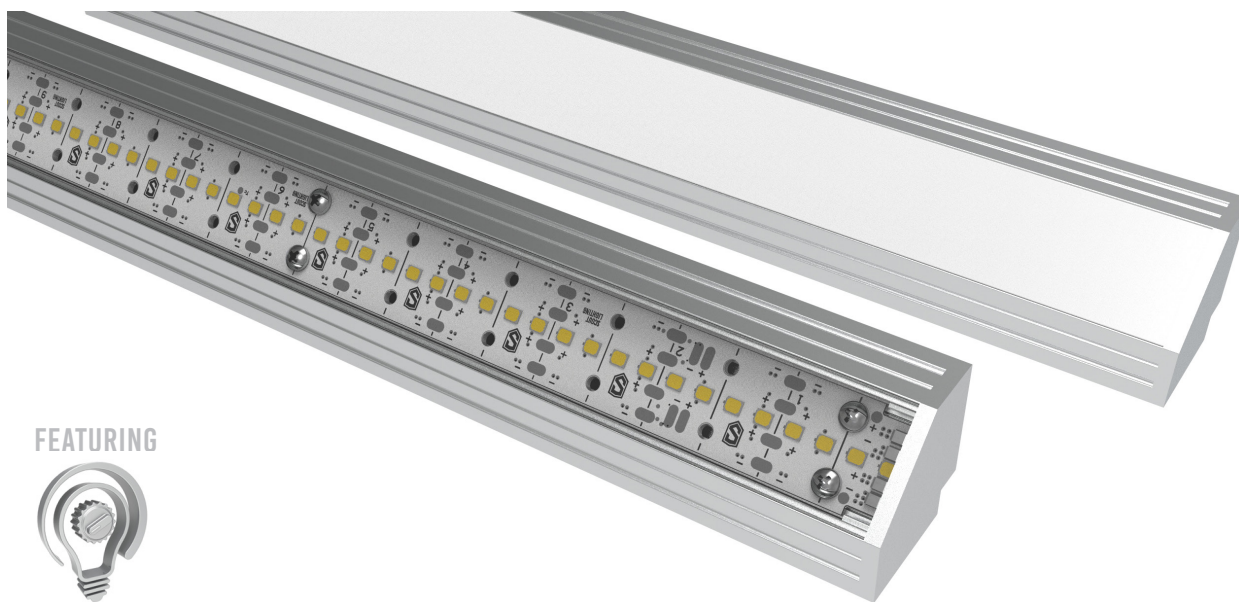


Project :

Firm :

Type :

Quantity:



AMERICAN MADE



**Intertek**  
5011600

## WARRANTY

5 Years

## EFFICACY

150 Lm / Wt

## MACADAM

### 3 Step

**CRI**

90+

R9

50+

FEATURING



## LUMENDIAL

## Features

- Fully Assembled
- Rigid Scout Engines
- Cuttable to 1/2 Inch
- No Double sided tape
- Shop drawings for all orders
- Easy Plug and play system
- LumenDial allows you to dial in any lumen output
- Designed for the Contractor
- Solderless Connections
- No Visible hot-spots - ever (with milky lens)
- Illuminated Corners
- Endless runs - Inject new power feeds at any point

## Applications

- Cove Lighting
- Under Cabinet
- Stair / Toe Kick
- Back Lighting
- Vanity Lighting

2200

2700

3000

3500

4000

5000

## Part # Builder

SS-C	+		+		+		+		+		+							
Prefix	+	Lens	+	Intensity <sup>1</sup>	+	CCT	+	Finish <sup>2</sup>	+	Feed <sup>3</sup>	+	Control	+	Mount	+	Blind Cove <sup>4</sup>	+	Length
Corner Fixture	FF - Flat Frosted Visible Diodes	L - Low	22 - 2200K	M - Mill	0 - End	0 - None	N - None	N - No	X"Y"									
		M - Medium	27 - 2700K	W -White	1 - UL-SF	1 - 0-10	S - Surface Clip	Y - Yes										
	FM - Flat Milky No Imaging	H - High	30 - 3000K	B - Black	2 - UL-RF	2- DMX	B - Blind Clip											
		LD - Lumen Dial <sup>1</sup>	35 - 3500K	Custom RAL #	3 - DL-SF	3- POE	T - Tiltable Stand											
			40 - 4000K		4 - DL-RF	SM - Surface Magnetic												
			50 - 5000K		BM - Blind Maagnetic													

<sup>1</sup> LumennDial : Custom Output : The Scout Engines can be programmed for any lumen output from 1 to 1,400 lumens per foot. Contact Factory for more info.

<sup>2</sup> Finish : Mill Finish comes standard. Cost Adder for Powder Coating. Contact Factory for Custom RAL#.

<sup>3</sup>Feed : See Feed details on page 4

<sup>4</sup>See Blind Cove details on page 5.

<sup>5</sup> Ordering info on page 9.





### Quick Specifications

#### LED SYSTEM

Proprietary linear LED Scout Engine incorporates premium Cree LEDs on a robust platform to achieve excellent thermal management. LEDs are placed to promote a uniform appearance.  
Available in 2200K, 2700K, 3000K, 3500K, 4000K or 5000K in 90+ CRI. LED modules and drivers are replaceable.  
Color accuracy <3 SDCM

#### CONSTRUCTION

One piece extruded aluminum housing. Cast aluminum end caps.

#### OPTICS

Injected Molded Grazer Optic. 10x60 Distribution.  
Optics cut at 3.75" intervals.

#### ELECTRICAL

Fixture come preassembled with 8" whip.  
All Drivers are installed in remote location.  
All drivers are Universal input 120-277 VAC.  
Standard Constant Current drivers include 0-10V dimming preinstalled in an enclosure.

#### LABELS

Conforms To UL STD 2108 Certified To CSA STD C22.2 # 250.0  
Suitable for Dry or Damp Locations, indoor use only.

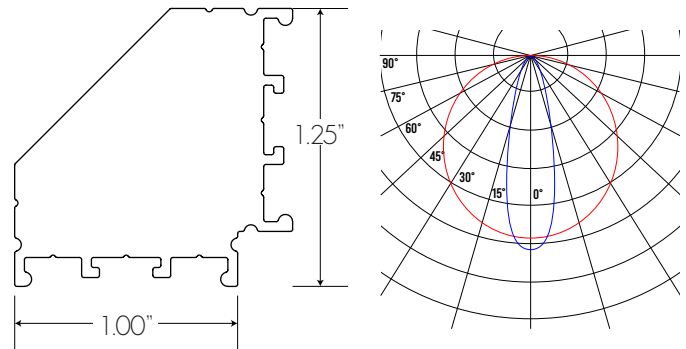
#### FINISH

Standard Mill Aluminum Finish.  
Powder Coating to any RAL# available upon specification

#### WARRANTY

5 Year Limited Warranty - Covers all Scout manufactured products.  
Default to manufactures warranty for all 3rd party components.

### Dimensions



### Frosted Lens : Visible Diodes

OUTPUT	LOW	MEDIUM	HIGH
Lumens / Foot	428	713	1188
Watts / Foot	2.8	4.8	8.3
Lumens / Watt	152	149	142

### Milky Lens : No Imaging

OUTPUT	LOW	MEDIUM	HIGH
Lumens / Foot	225	375	625
Watts / Foot	2.8	4.8	8.3
Lumens / Watt	80	78	75

Full Spec info on Page 9

### Scout Fixture Offerings



Basic

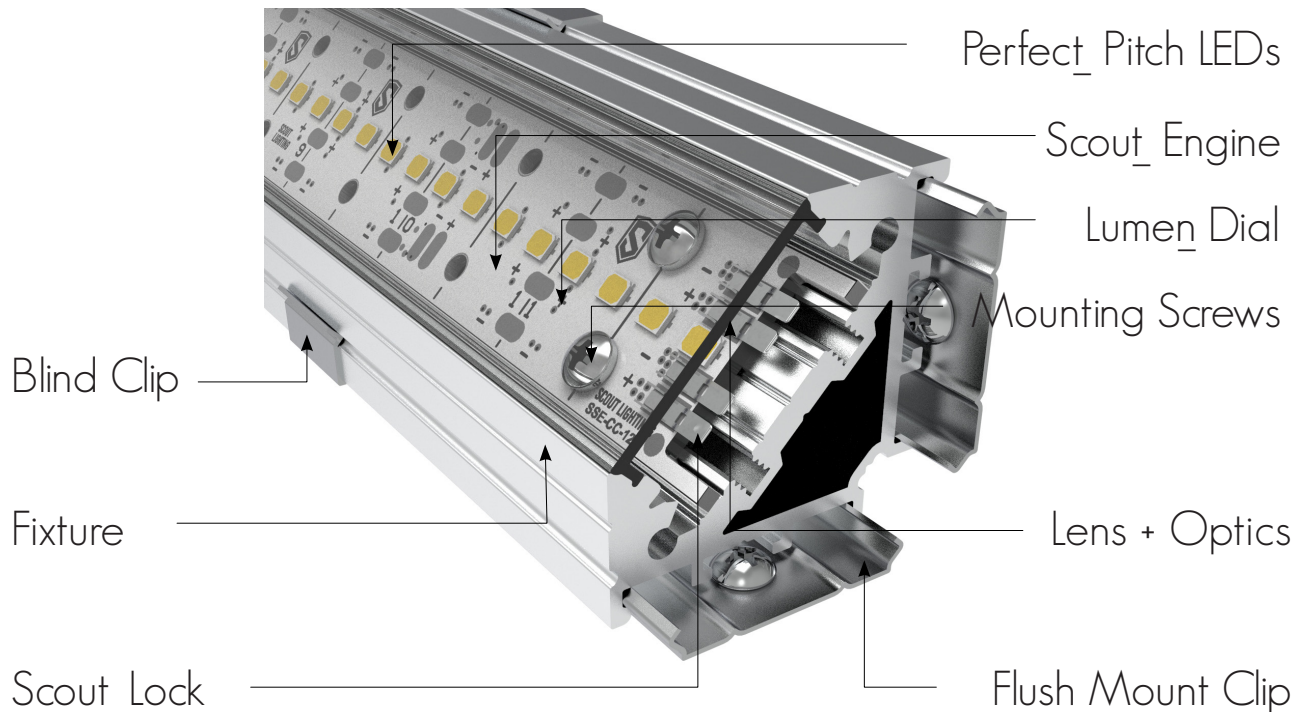
Surface

Grazer





### Fixture Anatomy



#### Perfect\_Pitch LEDs

Achieve an uncompromisable layer of architectural lighting at any intensity through LED spacing that never change with the intensity. This means no hot-spots and imaging when paired with the Milky lens.

#### Scout\_Engine

Rigid boards Plug and Play together.

Cutttable to 1/2 Inch

#### Lumen\_Dial

A patent pending circuit design delivers 3 separate intensities within a single engine. One engine, one pitch is the only way to simply and brilliantly bring a vision to reality.

#### Blind Clip

Scout's Wrap Around Blind Clip makes blind cove installation a breeze.

Also comes in Magnetic mounting

#### Scout\_Lock

Developed with a straightforward installation process in mind, engine connectors quickly lock together. No tools are necessary even when housing in the Scout Select Channel.

#### Flush Mount Clip

Scout's Surface mounting clip sits flush when installed. Once installed you'll never see it again!

Also comes in Magnetic mounting

#### Mounting Screws

No more double sided tape!

Scout's Rigid Engines are held firmly in place with screws.

#### Fixture

Designed from the ground up to be a module system.

Each fixture is 100% custom to you. Pre assembled and cut to the 1/2 inch

We can powder coat to any finish you desire.

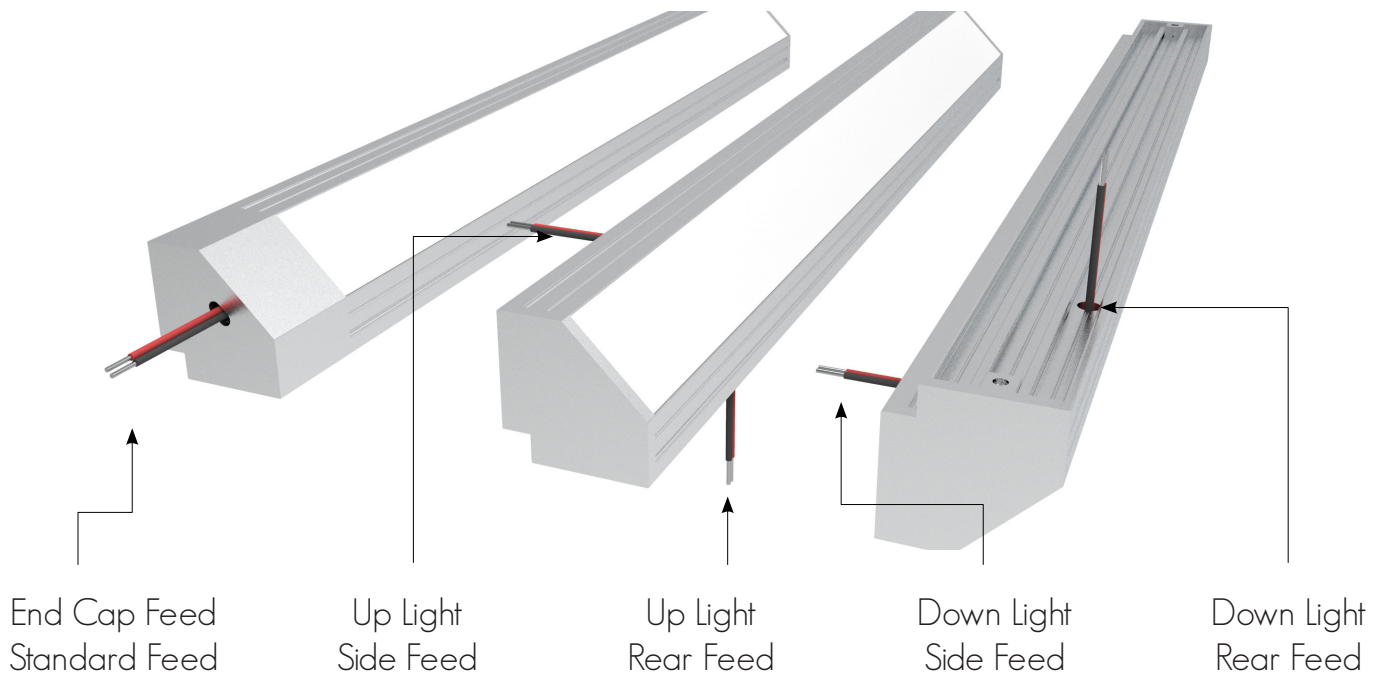
#### Lens + Optics

Scout offers multiple lens options for you. Frosted lens for maximum output, Milky lens for visible hot-spot free illumination and a 10 degree grazer to make those textured walls pop.

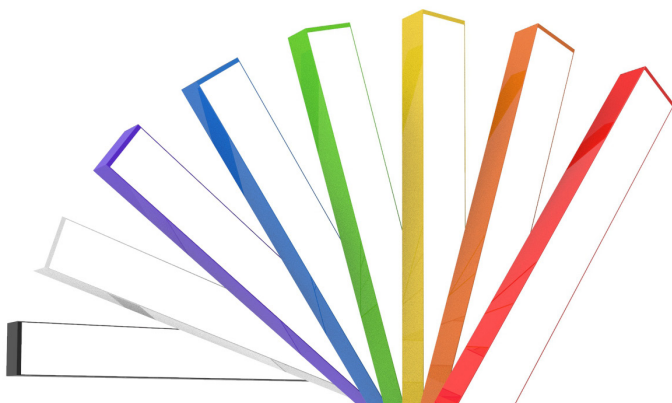




#### Feed Options



#### Finish

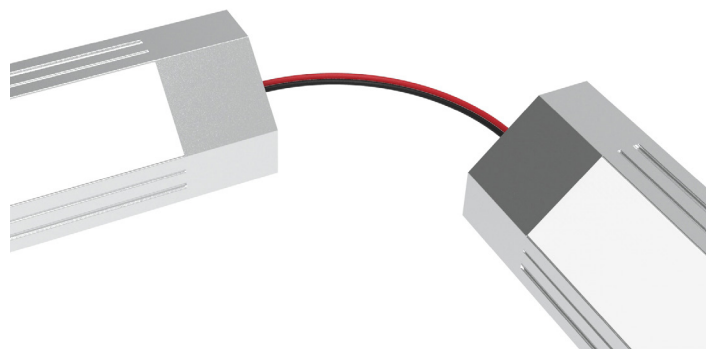


Powder Coat any Scout Fixture to any RAL #  
Scout Fixtures come standard Mill Finish Aluminum

Your Fixture. Your Design. Customized.

Price Adder for Powder Coating

#### Jumpers

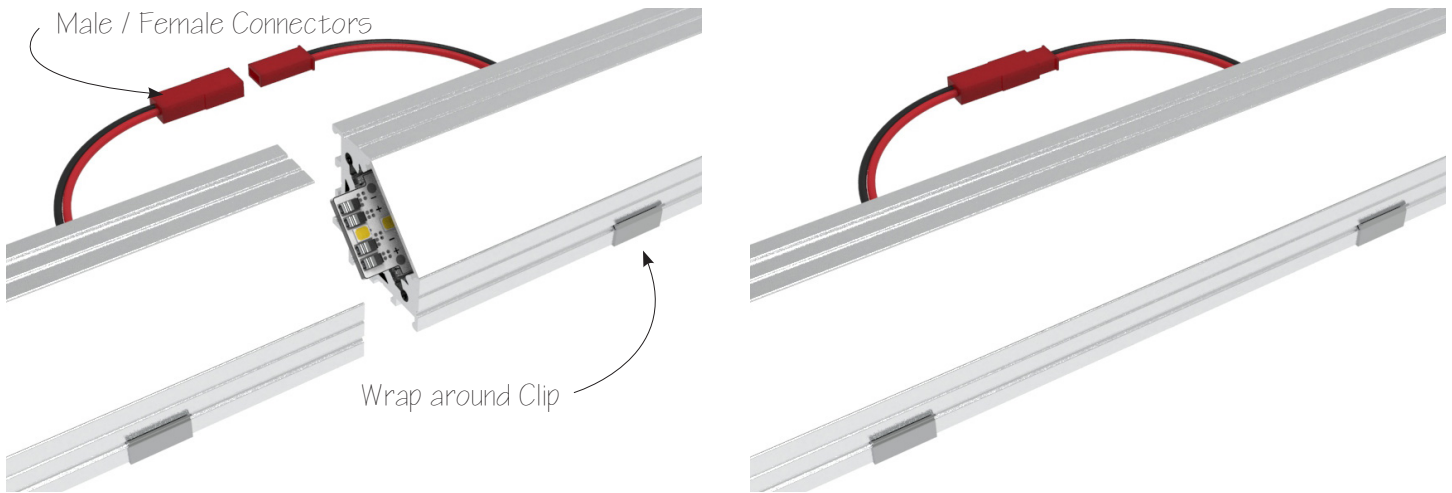


Whether you're turning an angle or daisy chaining the Scout Fixtures can be connected with any length of wire you choose.





#### Blind Cove Option



Scout offers a blind cove option for those hard to reach and see installs. The wrap around clip makes mounting a breeze and male / female connectors help make connections when you can't see.

#### Lumen Dial



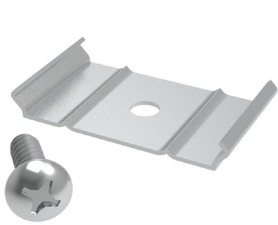
Scout's propriety Scout Engine can be dialed into any lumen or wattage value.

From 1 Lumen to 1,400 per foot!



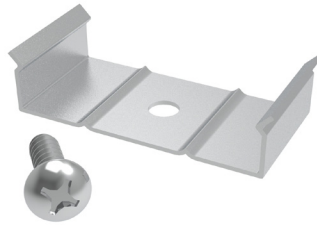
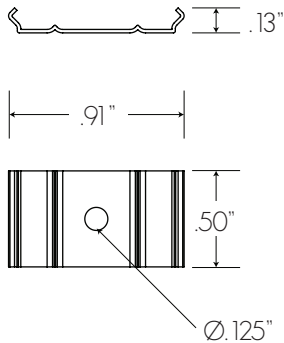


### Mounting Clips



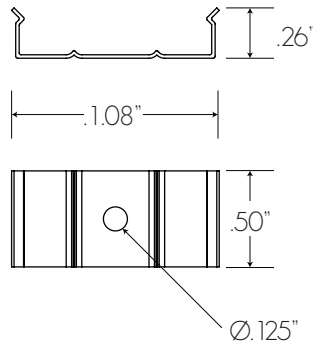
**FLUSH CLIP**  
PART # SSM

Ships with 1/2" #4 Screw  
Use #1 Phillips Bit Driver

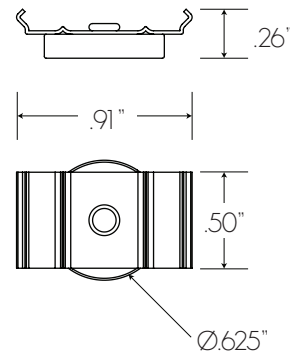


**BLIND CLIP**  
PART # SBM

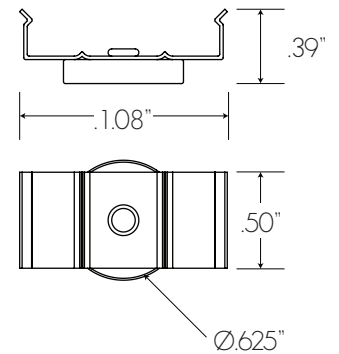
Ships with 1/2" #4 Screw  
Use #1 Phillips Bit Driver



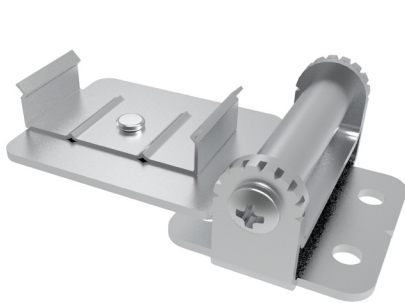
**FLUSH CLIP MAGNETIC**  
PART # SSMMAG



**BLIND CLIP MAGNETIC**  
PART # SSBMAG

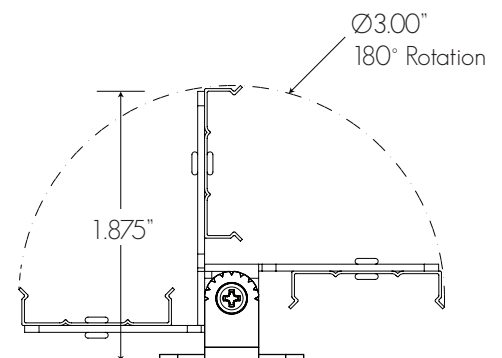
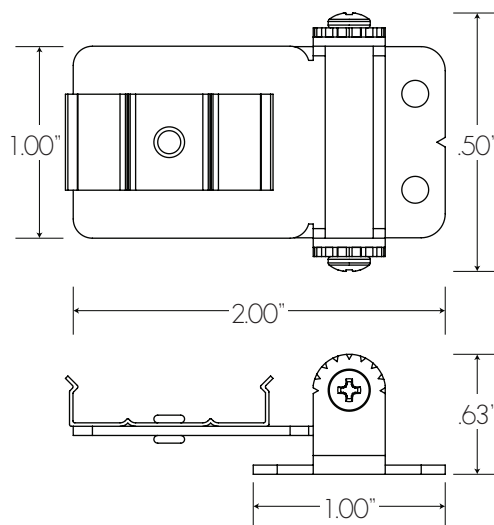


### Tiltable Stand



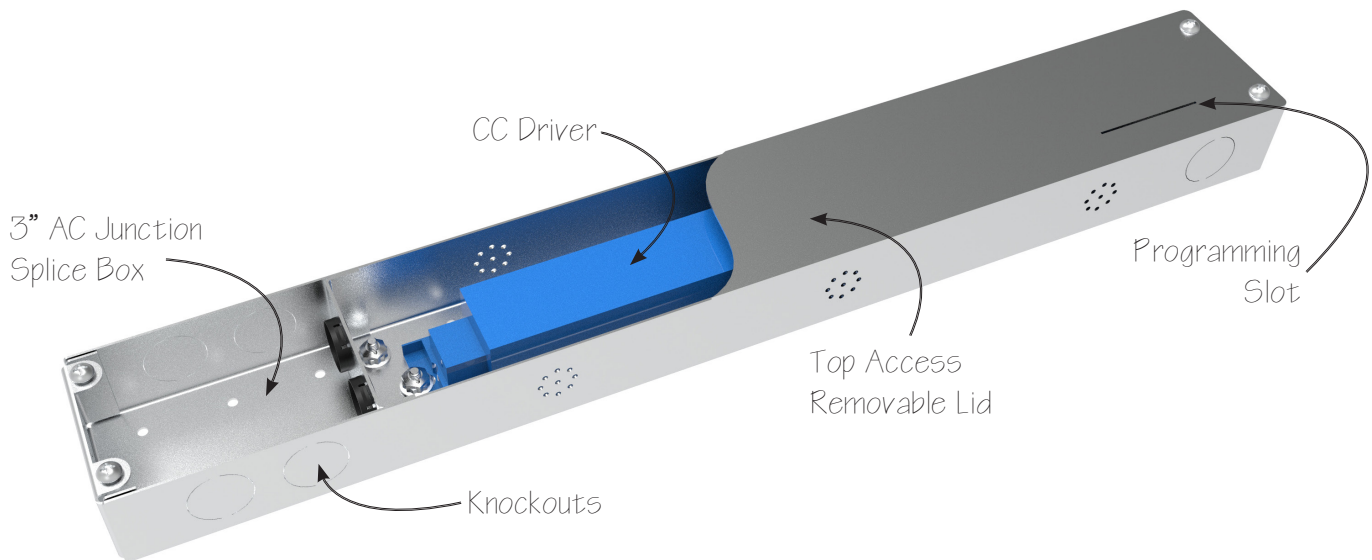
**TILTABLE STAND**  
PART # SSBTILT

Ships with 1/2" #4 Screw  
Use #1 Phillips Bit Driver





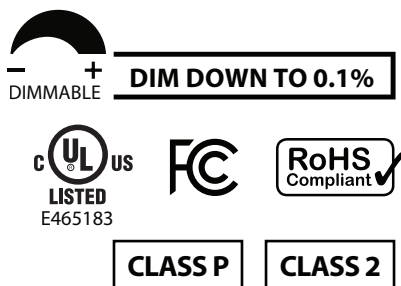
#### 0-10 Driver + Wiring



#### Features

- Compliant with Title 24 Requirements
- Wireless RFID Programming - No power required
- 0-10V Dimmable - Dim Down to 0.1%
- Dim To 0 Capability
- NTC - LED Temperature Sensor
- Auxiliary Power Output
- Wide Operating Window
- CLO (constant lumen output)
- Up to 90% efficiency
- Universal Input Voltage
- UL Listed 8750, Class 2, Class P

#### Approvals



#### Load + Distance

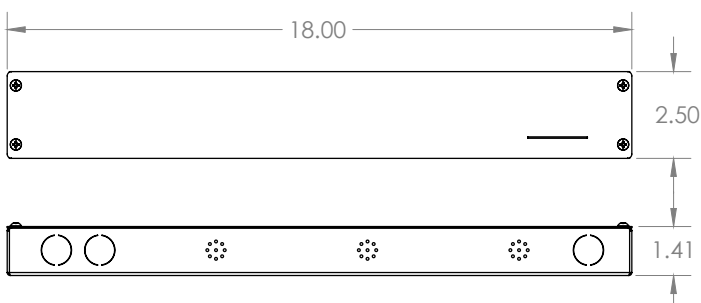
Max Distance at Full Load @ 2000 mA

18 AWG	16 AWG	12 AWG
40 Feet	60 Feet	150 Feet

Max Driver Load at 2000 mA

Low (89ma)	Medium (149ma)	High (256 ma)
22 Feet	13 Feet	7 Feet

#### Dimensions

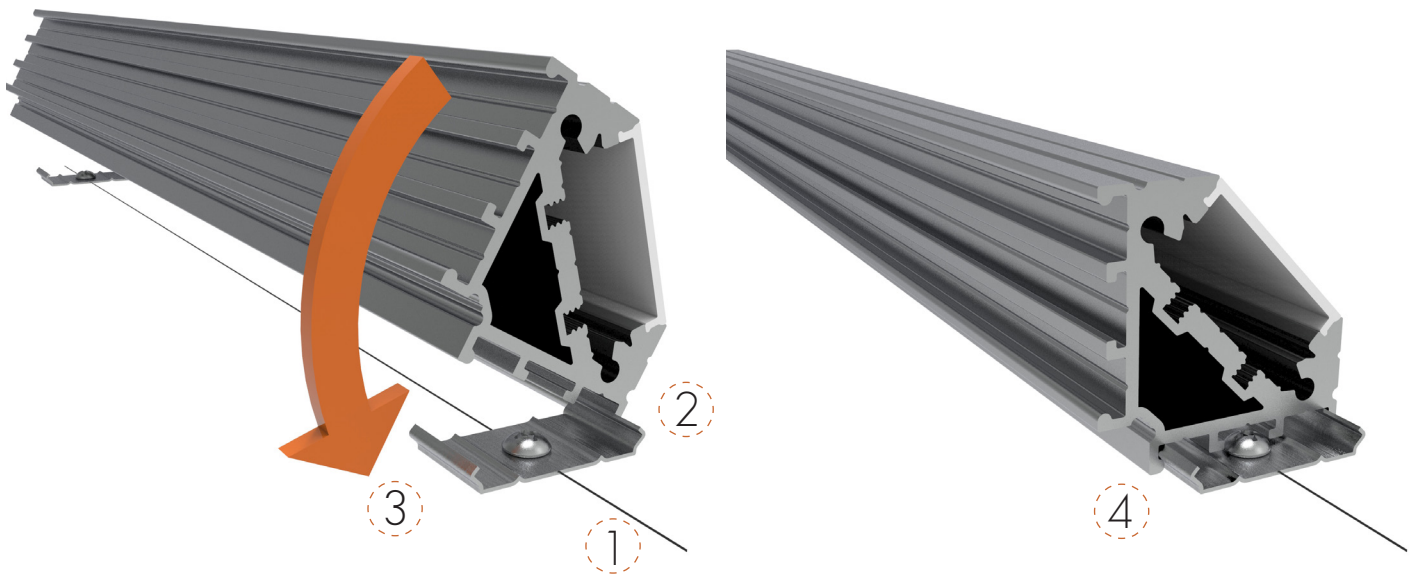


#### Wiring

GREEN	120 - 277 VAC 50/60HZ	DIM 0-10	GRAY (0-10 -)
BLACK (L)			PURPLE (0-10 +)
WHITE (N)		LED	BLACK (V-) RED (V+)

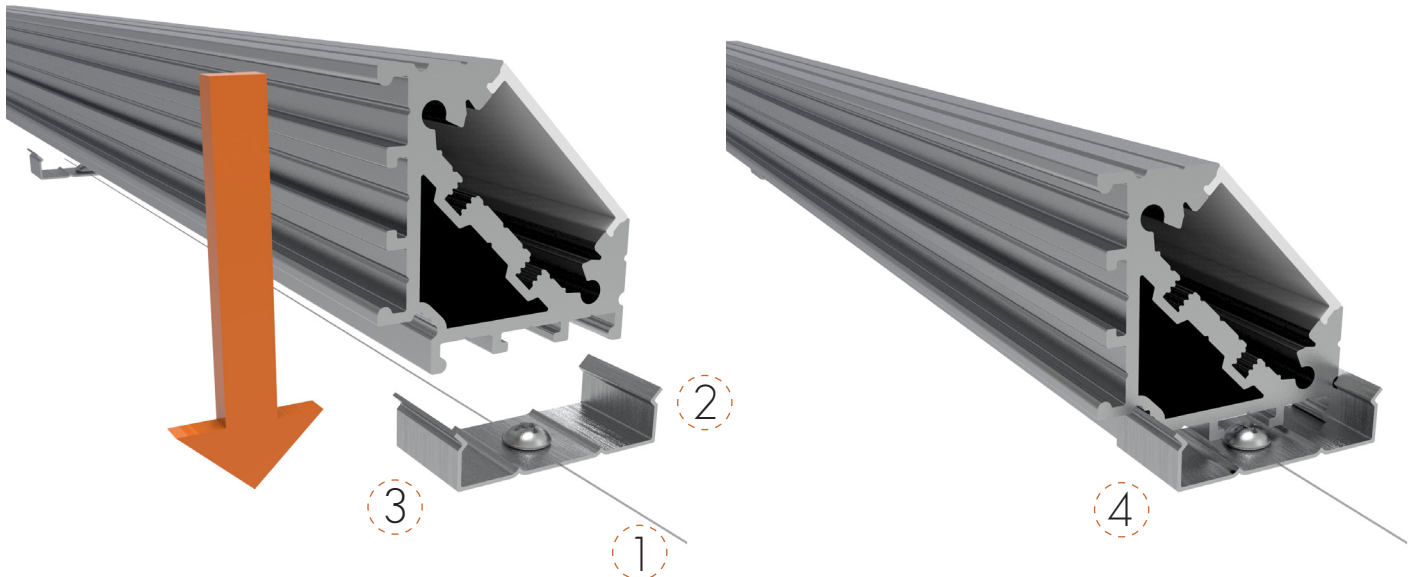


#### Flush Clip Install



1. Draw / Laser / Chalk a straight line and install clips on mounting plane.
2. Slide one edge of the Fixture against the clip.
3. Rotate Fixture down.
4. Snap the Fixture into the clip.

#### Blind Clip Install



1. Draw / Laser / Chalk a straight line and install clips on mounting plane.
2. Insert Fixture straight down into the Blind Clip.
3. Push Fixture down.
4. Snap the Fixture into the clip.





## Specification Details

INTENSITY	LOW	MEDIUM	HIGH	CCT	RELATIVE LUMINOUS FLUX
Watts / Foot	2.5 W/Ft	5.0 W/Ft	10 W/Ft	2200K	82%
mA / Foot	89 mA/Ft	149 mA/Ft	256 mA/Ft	2700K	100%
Frosted Lens: Lumens/ Foot	428 Lm/Ft	713 Lm/Ft	1188 Lm/Ft	3000K	100%
Frosted Lens: Lumens/ Watt <sup>1</sup>	152 Lm/Wt	149 Lm/Wt	142 Lm/Wt	3500K	115%
Milky Lens: Lumens/ Foot	225 Lm/Ft	375 Lm/Ft	625 Lm/Ft	4000K	118%
Milky Lens: Lumens/ Watt <sup>1</sup>	80 Lm/Wt	78 Lm/Wt	75 Lm/Wt	5000K	106%
Color Temperatures (K)	2200, 2700, 3000, 3500, 4000, 5000				
CRI	90+				
R9	50+				
MacAdams Ellipses	3 Steps				
Beam Angle <sup>2</sup>	120 Degrees				
IP Rating	IP20 - Dry Location				
Lamp Life	50,000 Hours				
Dimming / Control <sup>3</sup>	0-10 / POE / DMX / LUTRON				
Operating Temperature	-13°F to 122°F				
Warranty	5 Years				
Max Driver Load at 2A	22 Feet	13 Feet	7 Feet		
ETL	Conforms To UL STD 2108 - Certified To CSA STD C22.2 # 250.0				

## Ordering Details

- All fixtures come standard with starter end cap feed unless otherwise specified.
- All Scout Select Fixtures come preassembled up to 8 feet long with 8" power feed.
- Any Fixture length under 8 feet long will be made as a complete fixture.
- Any Fixture length over 8 feet long will be broken into 6 foot lengths + the balance length.  
I.E. A 10 Foot Fixture will be broken into 1 length @ 6 Feet and 1 @ 4 Feet.
- Fixtures daisy chain together with Scout Lock™ Technology. See figures 1.1 and 1.2 below.
- In situations where fixtures are longer then the maximum wattage load new power will be injected from either the side or rear. Standard Injection is side Feed 1.
- All orders come with an approval drawing. Fabrication will not begin until drawing has been signed off or waived.

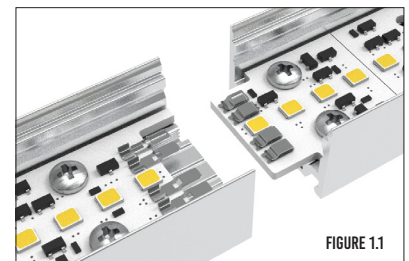


FIGURE 1.1

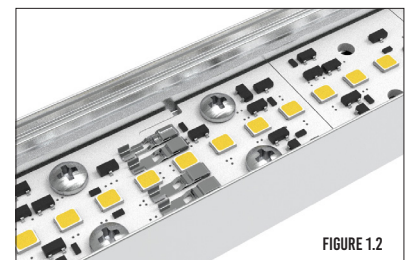


FIGURE 1.2

<sup>1</sup> Lumens / Watt takes into account nominal driver efficacy at full load

<sup>2</sup> Beam Angle with Milky Lens

<sup>3</sup> Not all dimmers / drivers compatible contact factory for testing