





**SCOUT LIGHTING**  
Designed - Built - Shipped - New York

**SURFACE FIXTURE**  
**TUNEABLE WHITE**

## SCOUT RECOGNIZED 2021 IES PROGRESS REPORT



"Scout has released its Select Linear Accent Lighting Line as the first linear accent lighting product that is cuttable every 1/2-inch with the ability to burn in a specific lumen and wattage output at time of assembly. The client is able to choose from 1 to 1400 lumens per linear foot. Their proprietary boards have low-profile male / female connectors and the engines are designed with side and rear feed points every inch." - IES Progress Report

### OUR PHILOSOPHY

At Scout, everything we do is driven by three simple philosophies:

- We do the job that needs to be done.
- If something isn't perfect we'll do it again, regardless of time.
- We design what we love and love what we design.

We proudly stand on the front-line of the industry - taking risks to achieve superior and simpler product. **THIS IS THE WAY OF THE SCOUT.**



### LUMEN\_DIAL

**ANY LUMEN VALUE: BETWEEN 1 - 1,400 PER FOOT**  
**ANY WATTAGE: BETWEEN 0.1 - 10 PER FOOT**  
**DIALED IN TO YOUR SPECIFICATION**

Scout's proprietary award-winning light engines have the ability to dial in any intensity or wattage you desire without changing a thing on the engine. We can guarantee you'll never have a hot spot or shadow again.

**QUICKSHIP**   
**7-10 DAYS**

Designed • Built • Shipped  
**NEW YORK**

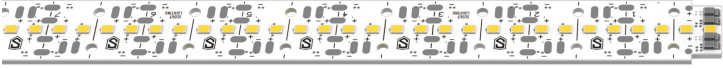




**SCOUT LIGHTING**  
Designed - Built - Shipped - New York

**SURFACE FIXTURE**  
**TUNEABLE WHITE**

**THE SCOUT ENGINES - THE HEART OF EVERY FIXTURE**



**STATIC WHITE**



**TUNEABLE WHITE**



**RGB WHITE**

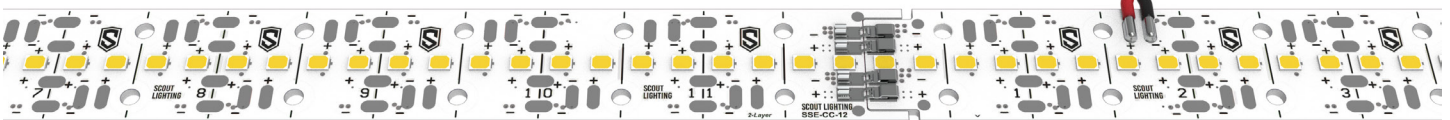
SCOUTS AWARD-WINNING RIGID ENGINES HAVE BEEN EXPANDED TO INCLUDE TUNEABLE WHITE AND RGB



**POWER WHERE YOU NEED IT**

Our propriety patented engines feature solderless connectors and low-profile male / female connectors, enabling simple snap-together installation. Throw in the ability to inject power from either side or the rear, and we can offer you limitless runs without ever having a break in your light.

**PERFECT\_PITCH**





## Quick Specifications

### LED SYSTEM

Proprietary linear LED Scout Engine incorporates premium Cree LEDs on a robust platform to achieve excellent thermal management. LEDs are placed to promote a uniform appearance.  
Available in 2200 - 3500K in 90+ CRI. LED modules and drivers are replaceable.  
Color accuracy <3 SDCM  
Custom CCT Range available. Contact factory for more info.

### CONSTRUCTION

One piece extruded aluminum housing. Cast aluminum end caps.

### OPTICS

Extruded High Transmission Milky Acrylic Lens with No LED imaging.  
Extruded High Transmission Frosted Acrylic Lens with LED imaging.

### ELECTRICAL

Fixture come preassembled with 8" whip.  
All Drivers are installed in remote location.  
All drivers are Universal input 120-277 VAC.  
Standard Constant Current drivers include 0-10V dimming preinstalled in an enclosure.

### LABELS

Conforms To UL STD 2108 Certified To CSA STD C22.2 # 250.0  
Suitable for Dry or Damp Locations, indoor use only.

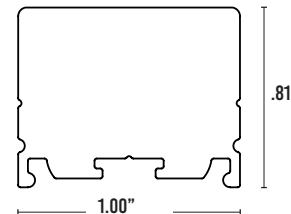
### FINISH

Standard Mill Aluminum Finish.  
Powder Coating to any RAL# available upon specification

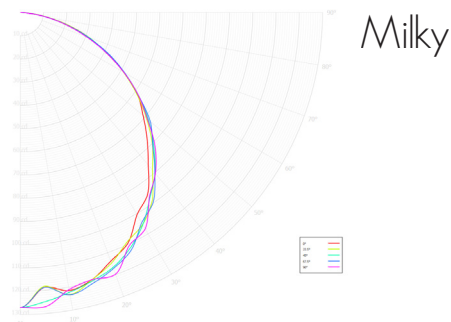
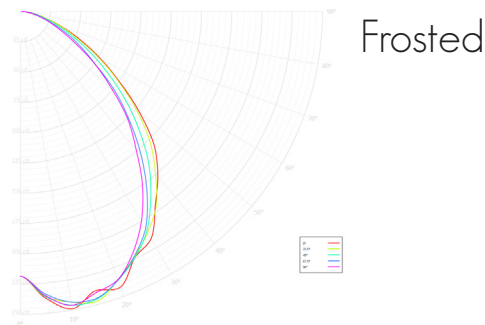
### WARRANTY

5 Year Limited Warranty - Covers all Scout manufactured products.  
Default to manufactures warranty for all 3rd party components.

## Dimensions



## Candela Polar Plot



## Frosted Lens : Visible Diodes - 5% Light Loss

OUTPUT	SL	L	M	H	SH
Lumens / Foot	219	388	644	1092	1273
Watts / Foot	1.6	2.8	4.8	8.3	9.8
Lumens / Watt	139	138	135	131	129

## Milky Lens : No Imaging - 50% Light Loss

OUTPUT	SL	L	M	H	SH
Lumens / Foot	115	204	339	575	670
Watts / Foot	1.6	2.8	4.8	8.3	9.8
Lumens / Watt	73	72	71	69	68

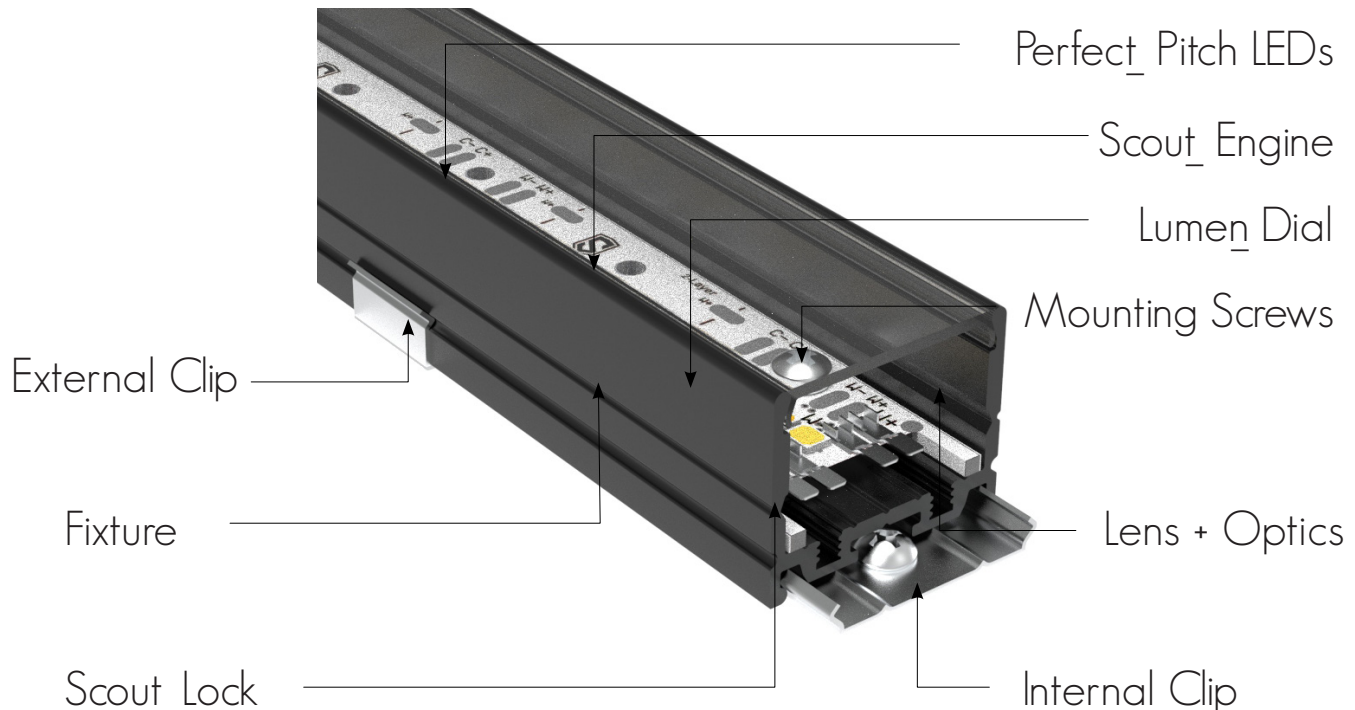




**SCOUT LIGHTING**  
Designed - Built - Shipped - New York

## SURFACE FIXTURE TUNEABLE WHITE

### Fixture Anatomy



#### Perfect\_Pitch LEDS

Achieve an uncompromisable layer of architectural lighting at any intensity through LED spacing that never change with the intensity. This means no hot-spots and imaging when paired with the Milky lens.

#### Scout\_Engine

Rigid boards Plug and Play together.

Cutttable to 1/2 Inch

#### Mounting Screws

No more double sided tape!

Scout's Rigid Engines are held firmly in place with screws.

#### Lumen\_Dial

A patent pending circuit design delivers 3 separate intensities within a single engine. One engine, one pitch is the only way to simply and brilliantly bring a vision to reality.

#### Blind Clip

Scout's Wrap Around Blind Clip makes blind cove installation a breeze.

Also comes in Magnetic mounting

#### Fixture

Designed from the ground up to be a module system.

Each fixture is 100% custom to you. Pre assembled and cut to the 1/2 inch

We can powder coat to any finish you desire.

#### Scout\_Lock

Developed with a straightforward installation process in mind, engine connectors quickly lock together. No tools are necessary even when housing in the Scout Select Channel.

#### Flush Mount Clip

Scout's Surface mounting clip sits flush when installed. Once installed you'll never see it again!

Also comes in Magnetic mounting

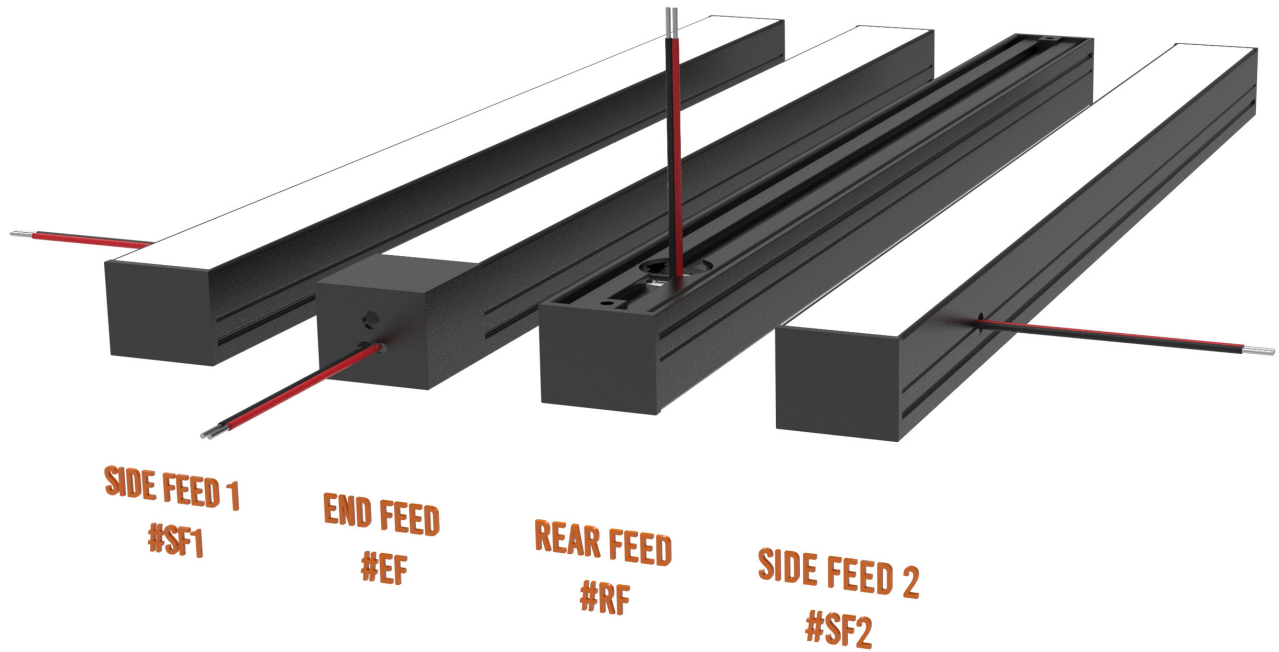
#### Lens + Optics

Scout offers multiple lens options for you. Frosted lens for maximum output, Milky lens for visible hot-spot free illumination and a 10 degree grazer to make those textured walls pop.

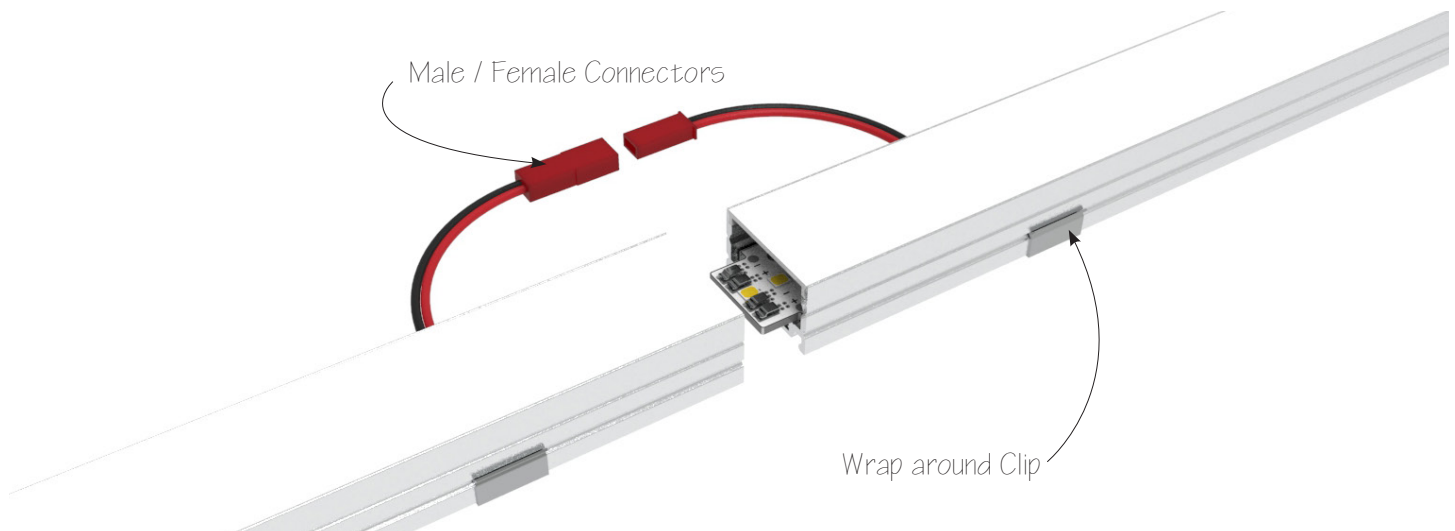




## Feed Options



## Blind Cove Option



Scout offers a blind cove option for those hard to reach and see installs. The wrap around clip makes mounting a breeze and male / female connectors help make connections when you can't see.



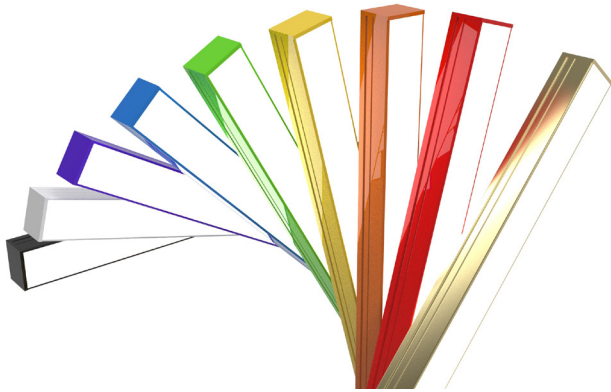




**SCOUT LIGHTING**  
Designed - Built - Shipped - New York

## SURFACE FIXTURE TUNEABLE WHITE

### Finish

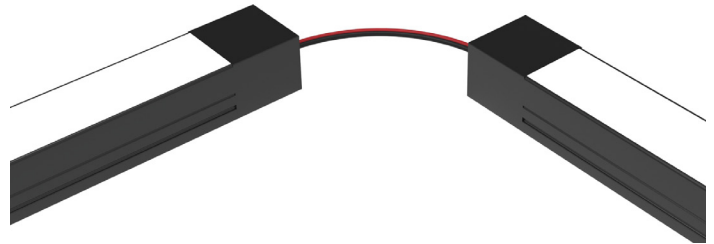


Powder Coat any Scout Fixture to any RAL #  
Scout Fixtures come standard Mill Finish Aluminum

Your Fixture. Your Design. Customized.

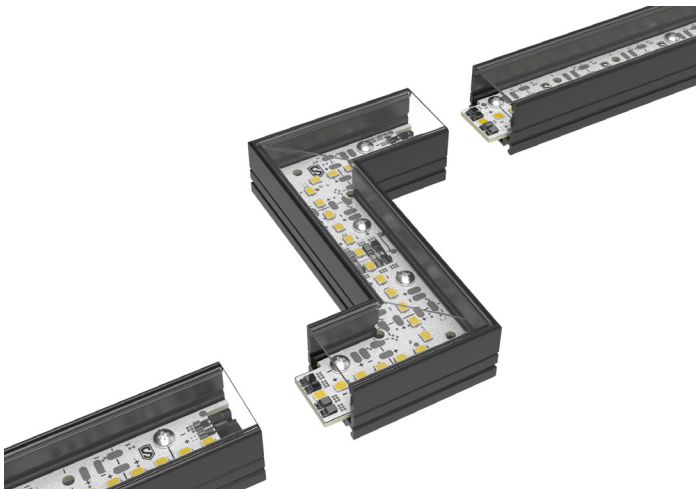
Price Adder for Powder Coating

### Jumpers



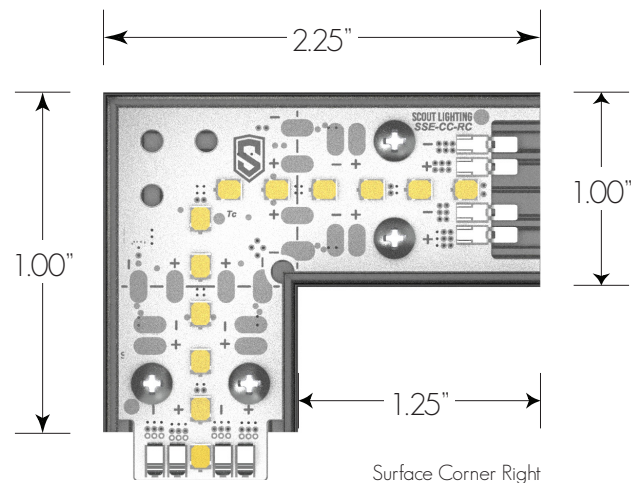
Whether you're turning an angle or daisy chaining the Scout Fixtures can be connected with any length of wire you choose.

### Patterns



Scout fixtures come completely preassembled.  
All the installers need to do is simply slide them together.  
New power feeds can be injected anywhere.  
Never have a break in light!

### Illuminated Corners



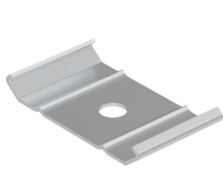
Scouts Illuminated corners come in both Left and Right Directions.

The corners snap into place with Scout Lock technology.



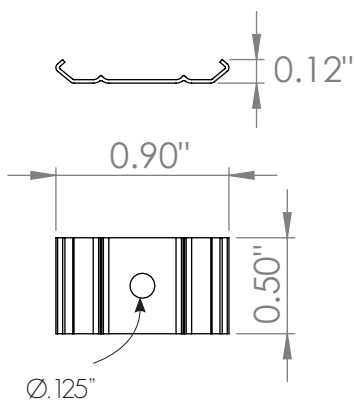


## Mounting Clips



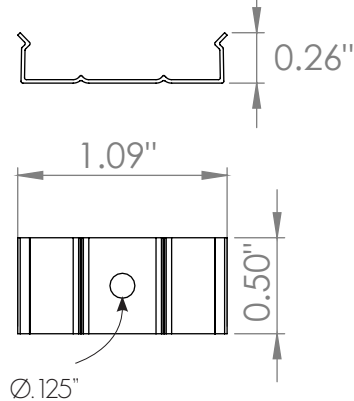
**INTERNAL CLIP**  
**PART # SMI**

Ships with 1/2" #4 Screw  
Use #1 Phillips Bit Driver

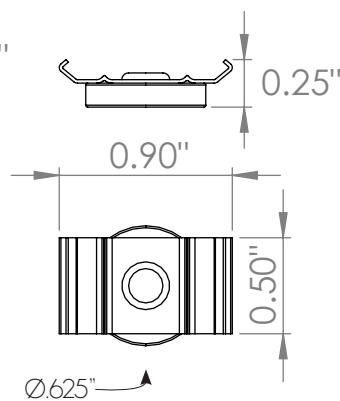


**EXTERNAL CLIP**  
**PART # SME**

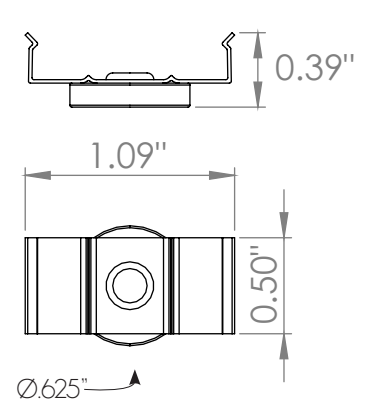
Ships with 1/2" #4 Screw  
Use #1 Phillips Bit Driver



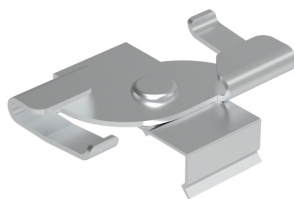
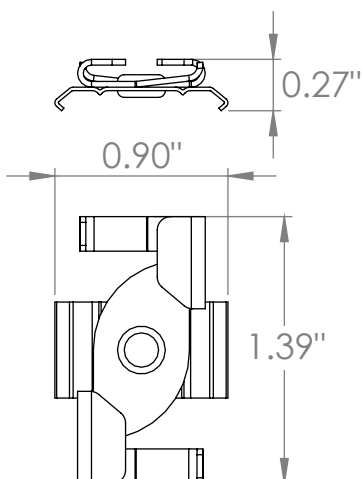
**INTERNAL MAGNETIC**  
**PART # SMIMAG**



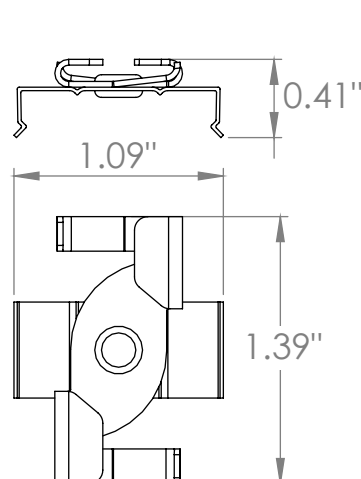
**EXTERNAL MAGNETIC**  
**PART # SME MAG**



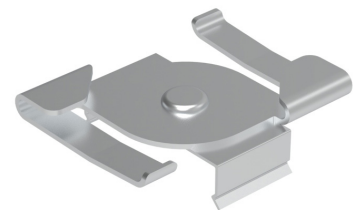
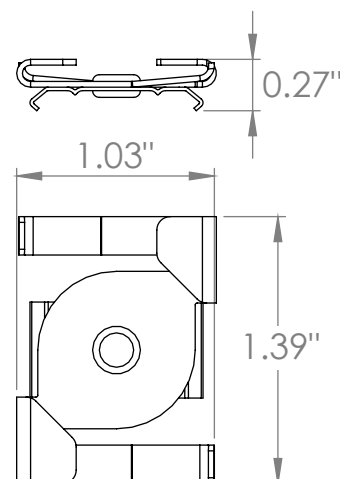
**9/16 T GRID - INTERNAL**  
**PART # SMIT9/16**



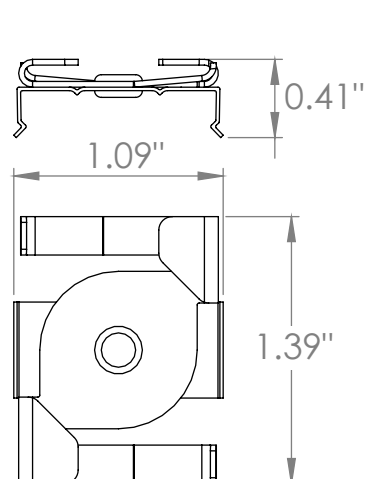
**9/16 T GRID - EXTERNAL**  
**PART # SMIT15/16**



**15/16 T GRID - INTERNAL**  
**PART # SMET15/16**



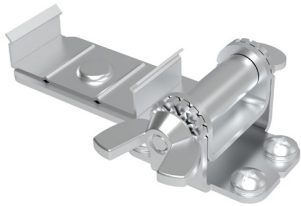
**15/16 T GRID - EXTERNAL**  
**PART # SMET15/16**





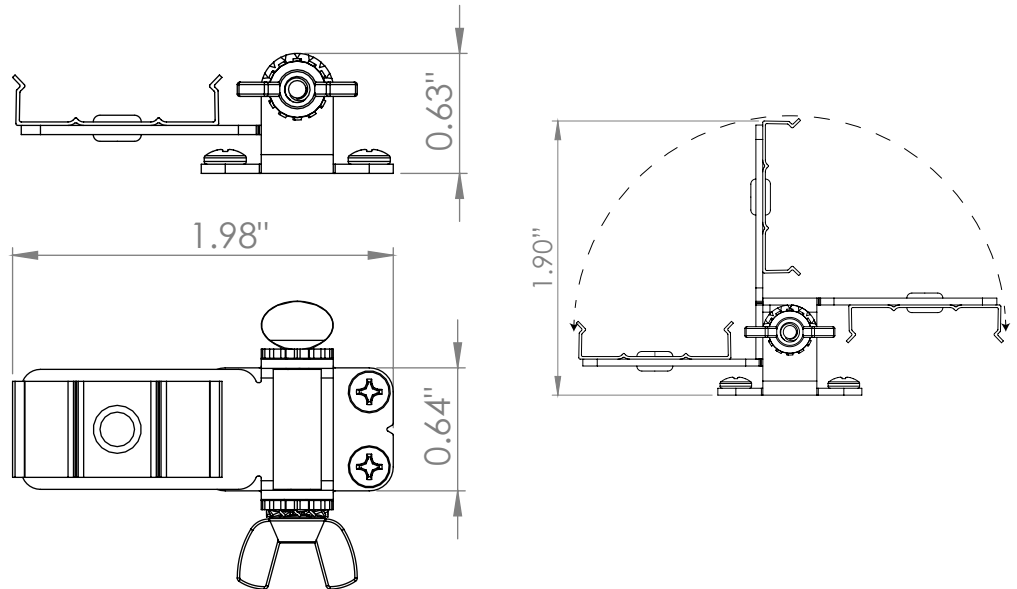


## Tiltable Stand



### TILTABLE STAND PART # SMETILT

Ships with 2 @ 1/2" #4 Screw  
Use #1 Phillips Bit Driver

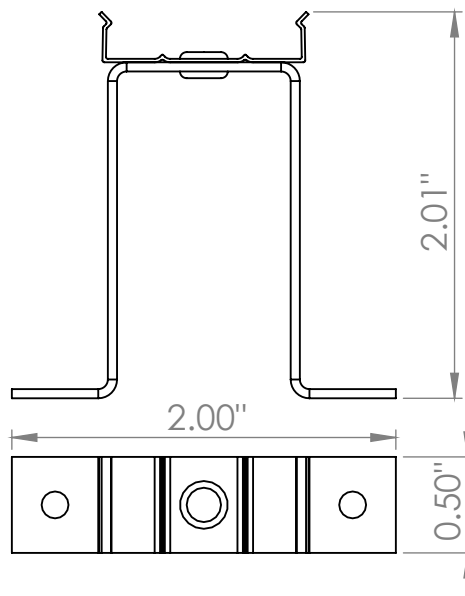


## Elevated Stand

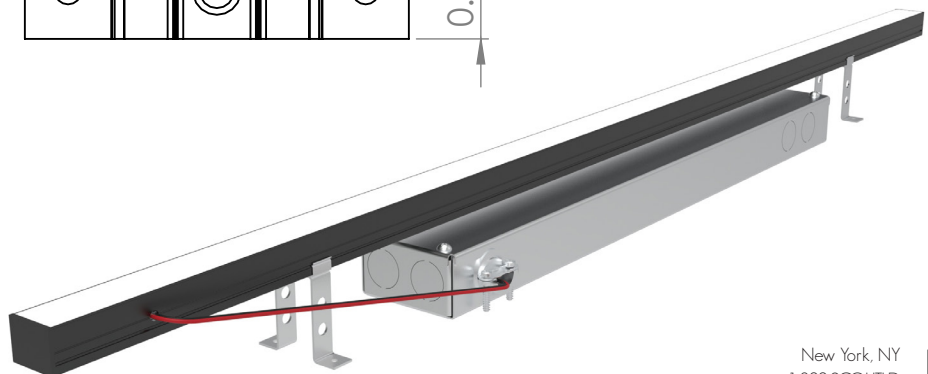


### ELEVATED CLIP PART # SMEELV

Ships with 2 @ 1/2" #4 Screw  
Use #1 Phillips Bit Driver

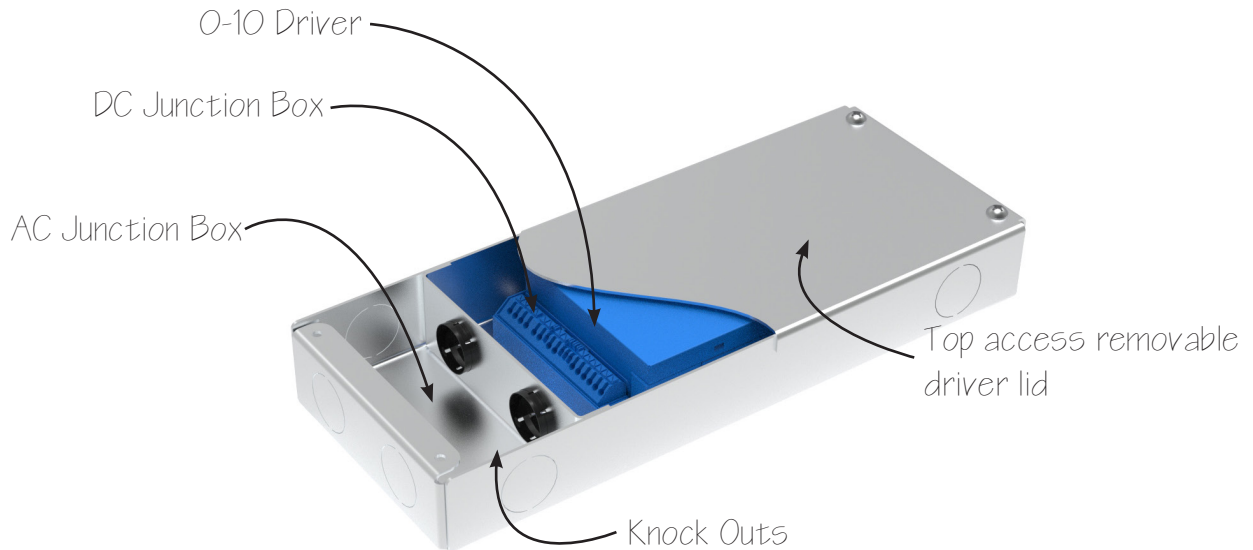


Elevate your Scout Fixture  
above your driver for simple wiring  
and installation`





## Drivers



All scout drivers come preinstalled inside of NEMA rated enclosures. Our proprietary driver enclosures come with AC and DC Junction boxes and knockouts around the perimeter. Contractors can use our AC junction box to make branch circuit connections.

### Max Load (2000mA)

Super Low (50mA)	40 Feet
Low (89mA)	22 Feet
Medium (149mA)	13 Feet
High (250mA)	8 Feet
Super High (300mA)	5 Feet

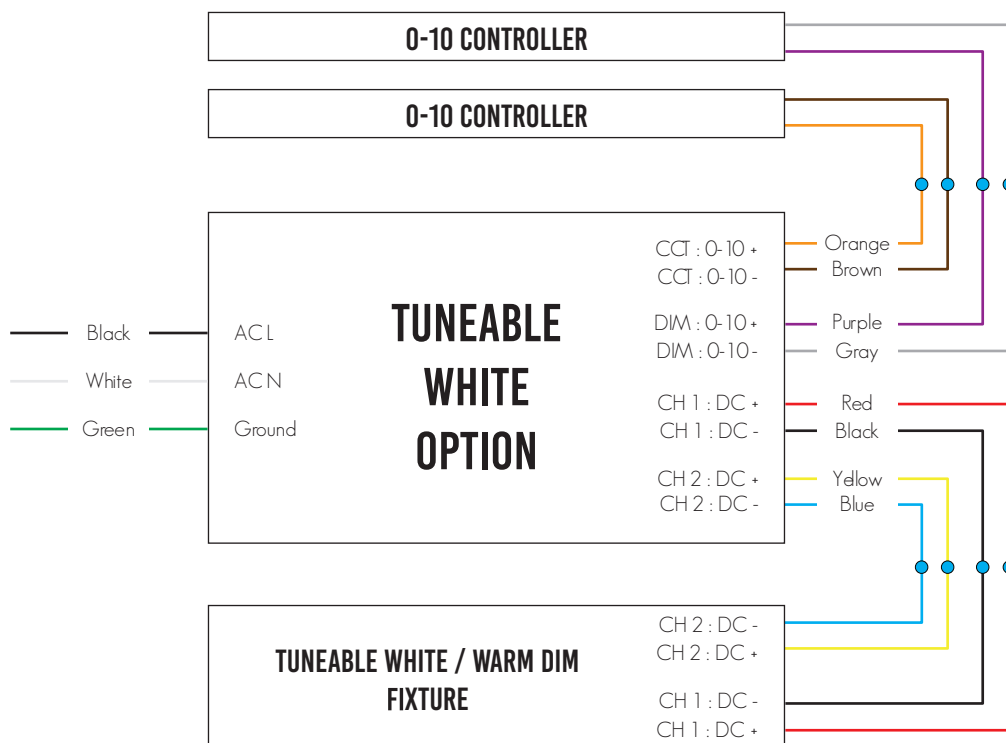
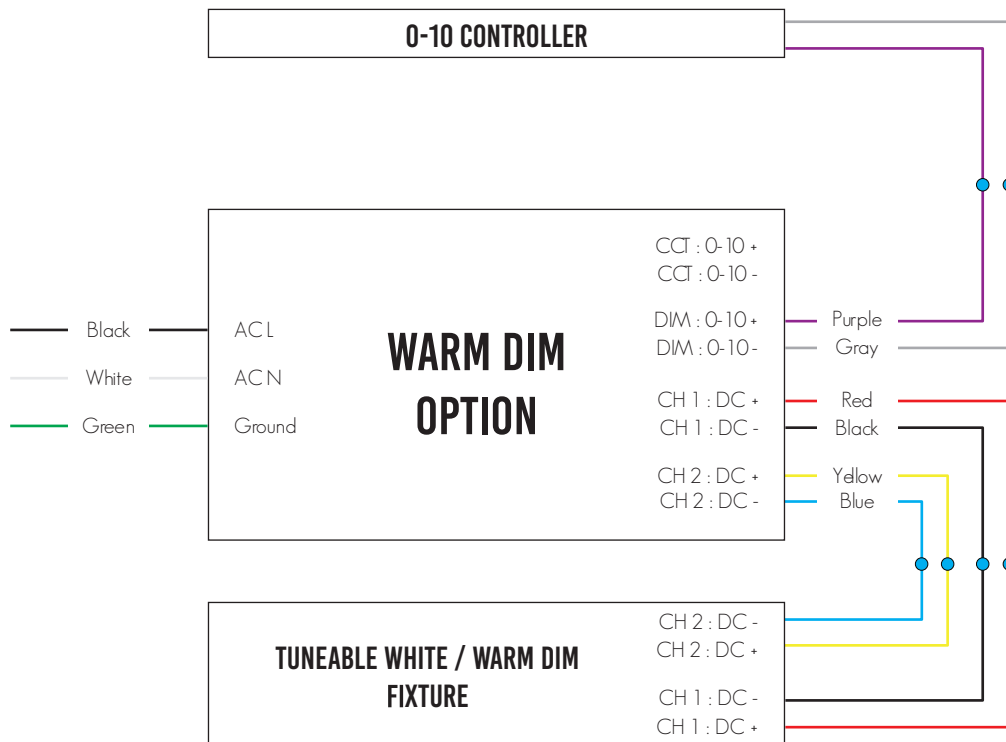
### Max Distance

20 AWG	20 Feet
18 AWG	40 Feet
16 AWG	60 Feet
14 AWG	100 Feet
12 AWG	150 Feet



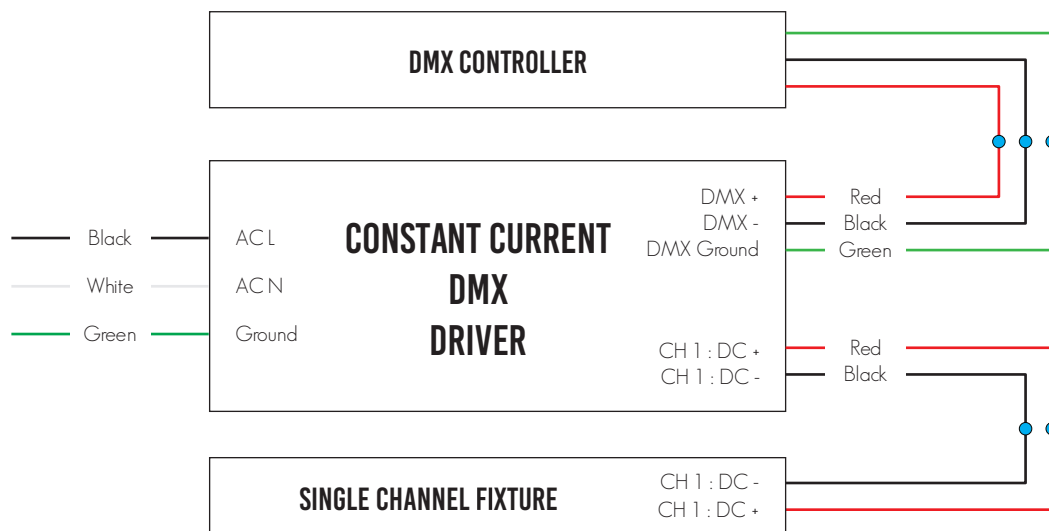
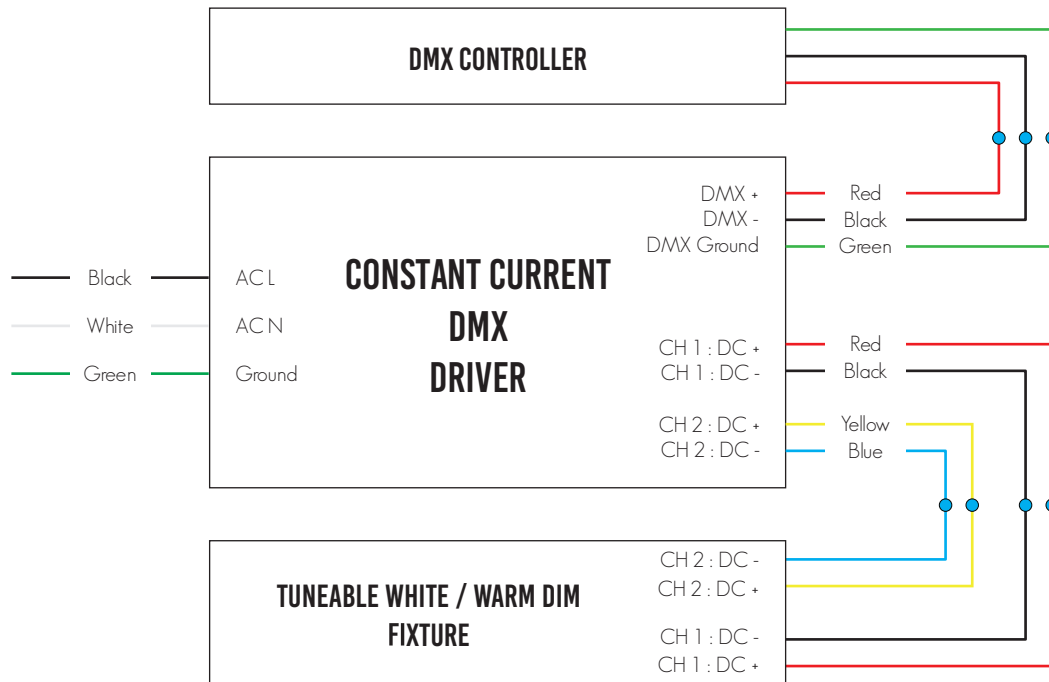


## 0-10 Wiring



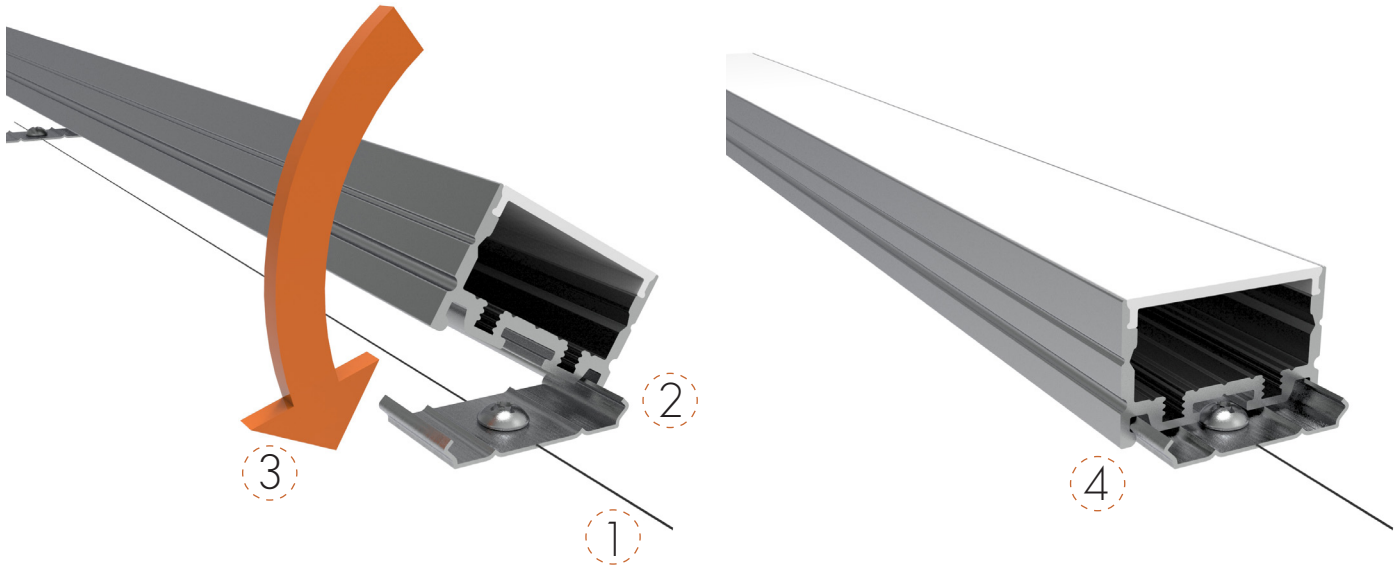


## DMX Wiring



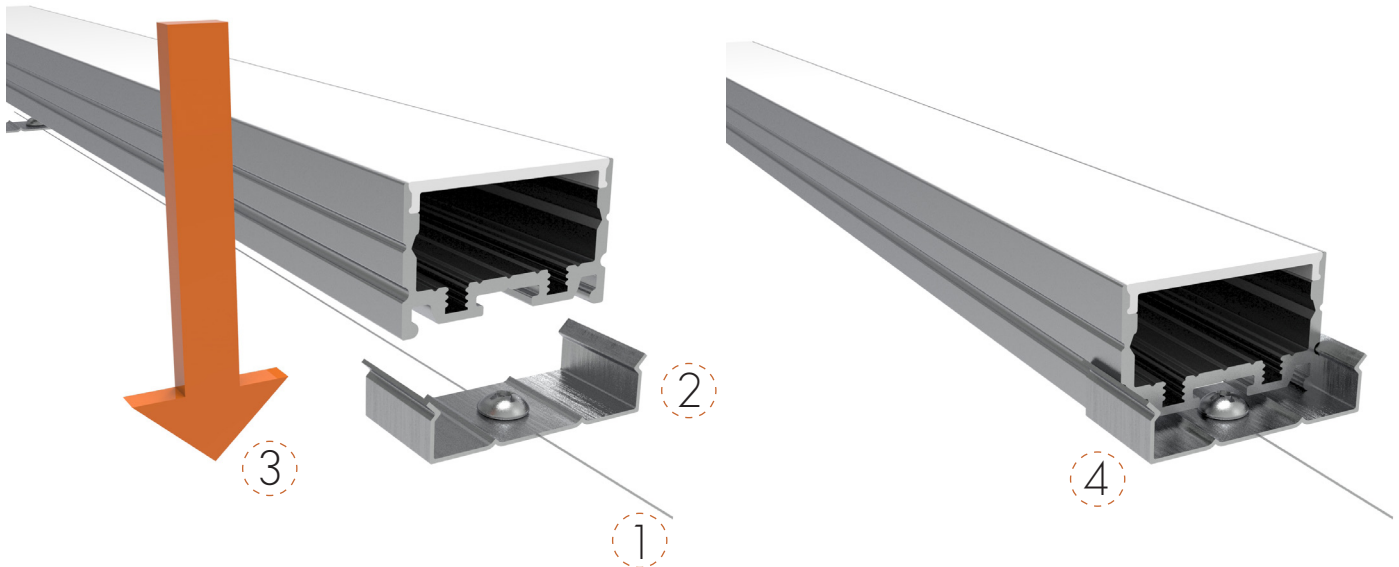


## Internal Clip Install



1. Draw / Laser / Chalk a straight line and install clips on mounting plane.
2. Slide one edge of the Fixture against the clip.
3. Rotate Fixture down.
4. Snap the Fixture into the clip.

## External Clip Install



1. Draw / Laser / Chalk a straight line and install clips on mounting plane.
2. Insert Fixture straight down into the Blind Clip.
3. Push Fixture down.
4. Snap the Fixture into the clip.





## Specification Details

INTENSITY	S. LOW	LOW	MEDIUM	HIGH	S. HIGH
Watts / Foot	1.6	2.8	4.8	8.3	9.8
mA / Foot	50	89	149	256	300
Frosted Lens: Lumens/ Foot	219	388	644	1092	1273
Frosted Lens: Lumens/ Watt <sup>1</sup>	139	138	135	131	129
Milky Lens: Lumens/ Foot	115	204	339	575	670
Milky Lens: Lumens/ Watt <sup>1</sup>	73	72	71	69	68
Color Temperatures (K)	2200 - 3500K				
CRI	90+				
R9	50+				
MacAdams Ellipses	3 Steps				
Beam Angle <sup>2</sup>	120 Degrees				
IP Rating	IP20 - Dry Location				
Lamp Life	50,000 Hours				
Dimming / Control <sup>3</sup>	0-10 / POE / DMX / DALI / PHASE / LUTRON				
Operating Temperature	-13°F to 122°F				
Warranty	5 Years				
Max Driver Load at 2A	40 Feet	22 Feet	13 Feet	8 Feet	5 Feet
ETL	Conforms To UL STD 2108 - Certified To CSA STD C22.2 # 2500				

CCT	LUMINOUS FLUX
2200K	82%
2700K	100%
3000K	100%
3500K	115%
4000K	118%
5000K	106%

## LUTRON

PSQ0

Lutron digital T-Series 1%  
2-Channel (Quantum/  
Athena controls)

## Ordering Details

- All fixtures come standard with starter end cap feed unless otherwise specified.
- All Scout Select Fixtures come preassembled up to 8 feet long with 8" power feed.
- Any Fixture length under 8 feet long will be made as a complete fixture.
- Any Fixture length over 8 feet long will be broken into 6 foot lengths + the balance length.  
I.E. A 10 Foot Fixture will be broken into 1 length @ 6 Feet and 1 @ 4 Feet.
- Fixtures daisy chain together with Scout\_Lock™ Technology. See figures 1.1 and 1.2 below.
- In situations where fixtures are longer then the maximum wattage load new power will be injected from either the side or rear. Standard Injection is side Feed 1.
- All orders come with an approval drawing. Fabrication will not begin until drawing has been signed off or waived.

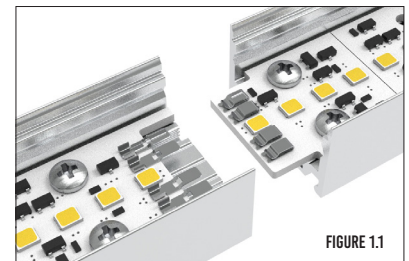


FIGURE 1.1

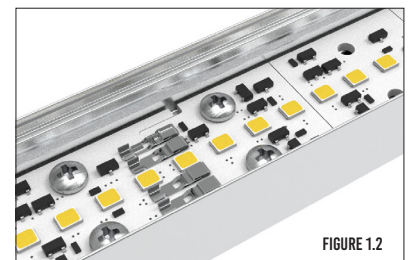


FIGURE 1.2

<sup>1</sup> Lumens / Watt takes into account nominal driver efficacy at full load

<sup>2</sup> Beam Angle with Milky Lens

<sup>3</sup> Not all dimmers / drivers compatible contact factory for testing

