

STATIC WHITE

Quantity:



5000





SCOUT LIGHTING
Designed - Built - Shipped - New York

SLIM FIXTURE
STATIC WHITE

SCOUT RECOGNIZED 2021 IES PROGRESS REPORT



"Scout has released its Select Linear Accent Lighting Line as the first linear accent lighting product that is cuttable every ½-inch with the ability to burn in a specific lumen and wattage output at time of assembly. The client is able to choose from 1 to 1400 lumens per linear foot. Their proprietary boards have low-profile male / female connectors and the engines are designed with side and rear feed points every inch." - IES Progress Report

OUR PHILOSOPHY

At Scout, everything we do is driven by three simple philosophies:

- We do the job that needs to be done.
- If something isn't perfect we'll do it again, regardless of time.
- We design what we love and love what we design.

We proudly stand on the front-line of the industry - taking risks to achieve superior and simpler product. **THIS IS THE WAY OF THE SCOUT.**



LUMEN_DIAL

ANY LUMEN VALUE: BETWEEN 1 - 1,400 PER FOOT
ANY WATTAGE: BETWEEN 0.1 - 10 PER FOOT
DIALED IN TO YOUR SPECIFICATION

Scout's proprietary award-winning light engines have the ability to dial in any intensity or wattage you desire without changing a thing on the engine. We can guarantee you'll never have a hot spot or shadow again.

QUICKSHIP 
7-10 DAYS

Designed • Built • Shipped
NEW YORK





SCOUT LIGHTING
Designed - Built - Shipped - New York

SLIM FIXTURE
STATIC WHITE

THE SCOUT ENGINES - THE HEART OF EVERY FIXTURE



STATIC WHITE



TUNEABLE WHITE

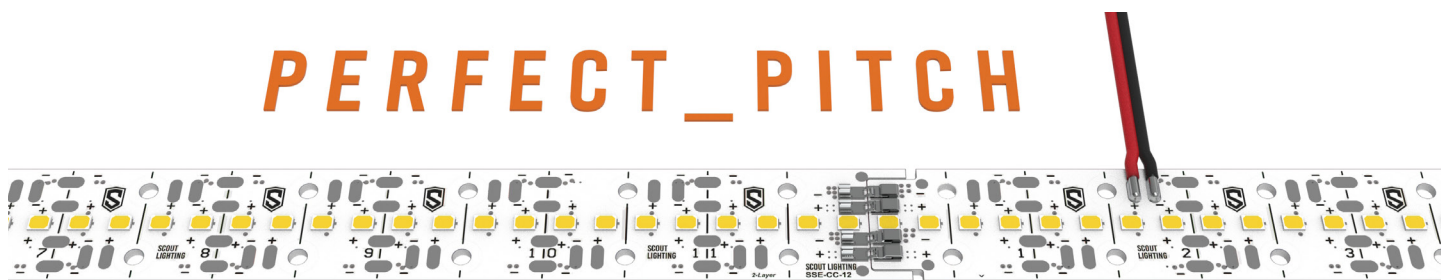


RGB WHITE

SCOUTS AWARD-WINNING RIGID ENGINES HAVE BEEN EXPANDED TO INCLUDE TUNEABLE WHITE AND RGB



Our propriety patented engines feature solderless connectors and low-profile male / female connectors, enabling simple snap-together installation. Throw in the ability to inject power from either side or the rear, and we can offer you limitless runs without ever having a break in your light.





Quick Specifications

LED SYSTEM

Proprietary linear LED Scout Engine incorporates premium Cree LEDs on a robust platform to achieve excellent thermal management. LEDs are placed to promote a uniform appearance.
Available in 2200K, 2700K, 3000K, 3500K, 4000K or 5000K in 90+ CRI. LED modules and drivers are replaceable.
Color accuracy <3 SDCM

CONSTRUCTION

One piece extruded aluminum housing. Cast aluminum end caps.

OPTICS

Extruded High Transmission Frosted Acrylic Lens with LED imaging.

ELECTRICAL

Fixture come preassembled with 8" whip.
All Drivers are installed in remote location.
All drivers are Universal input 120-277 VAC.
Standard Constant Current drivers include 0-10V dimming preinstalled in an enclosure.

LABELS

Conforms To UL STD 2108 Certified To CSA STD C22.2 # 250.0
Suitable for Dry or Damp Locations, indoor use only.

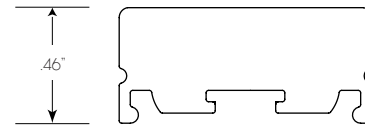
FINISH

Standard Mill Aluminum Finish.
Powder Coating to any RAL# available upon specification

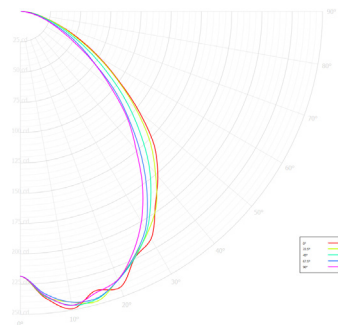
WARRANTY

5 Year Limited Warranty - Covers all Scout manufactured products.
Default to manufactures warranty for all 3rd party components.

Dimensions



Candela Polar Plot



Frosted

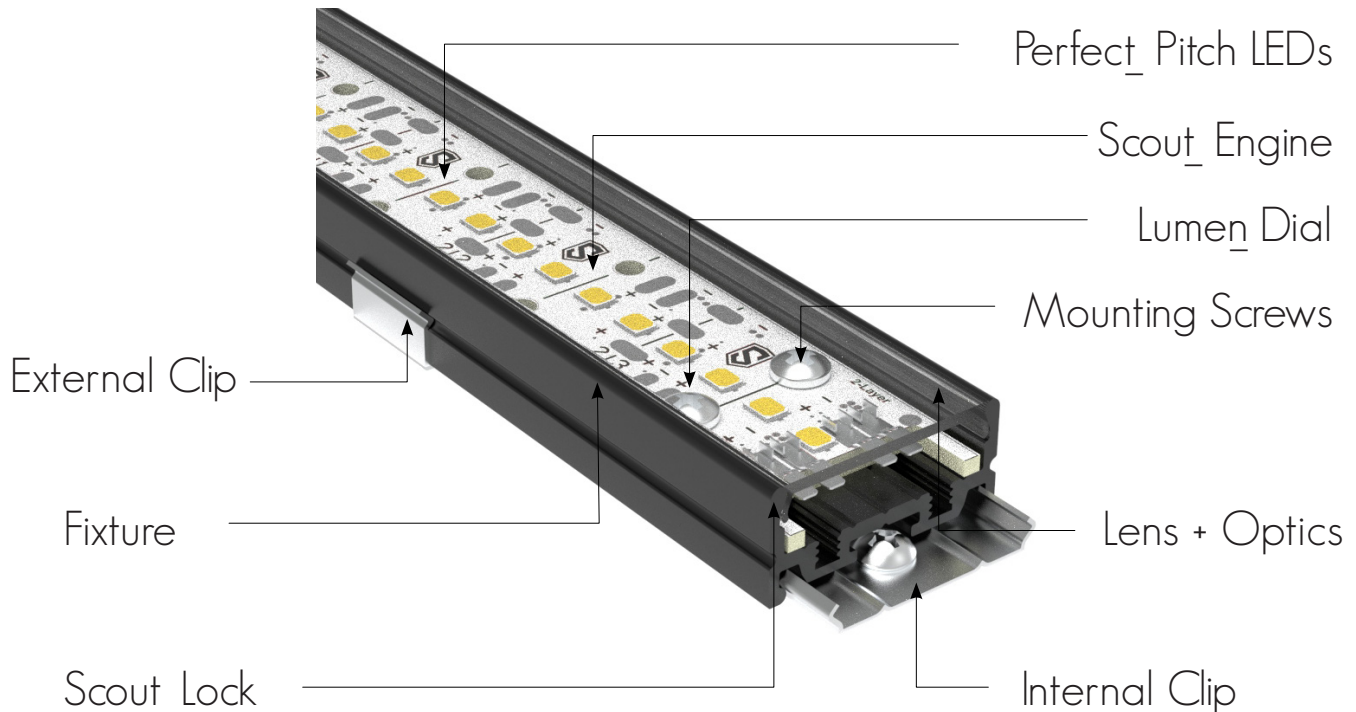
Frosted Lens : Visible Diodes - 5% Light Loss

| OUTPUT | SL | L | M | H | SH |
|---------------|-----|-----|-----|------|------|
| Lumens / Foot | 219 | 388 | 644 | 1092 | 1273 |
| Watts / Foot | 1.6 | 2.8 | 4.8 | 8.3 | 9.8 |
| Lumens / Watt | 139 | 138 | 135 | 131 | 129 |





Fixture Anatomy



Perfect_Pitch LEDS

Achieve an uncompromisable layer of architectural lighting at any intensity through LED spacing that never change with the intensity. This means no hot-spots and imaging when paired with the Milky lens.

Scout_Engine

Rigid boards Plug and Play together.

Cutttable to 1/2 Inch

Lumen_Dial

A patent pending circuit design delivers 3 separate intensities within a single engine. One engine, one pitch is the only way to simply and brilliantly bring a vision to reality.

Blind Clip

Scout's Wrap Around Blind Clip makes blind cove installation a breeze.

Also comes in Magnetic mounting

Scout_Lock

Developed with a straightforward installation process in mind, engine connectors quickly lock together. No tools are necessary even when housing in the Scout Select Channel.

Flush Mount Clip

Scout's Surface mounting clip sits flush when installed. Once installed you'll never see it again!

Also comes in Magnetic mounting

Mounting Screws

No more double sided tape!

Scout's Rigid Engines are held firmly in place with screws.

Fixture

Designed from the ground up to be a module system.

Each fixture is 100% custom to you. Pre assembled and cut to the 1/2 inch

We can powder coat to any finish you desire.

Lens + Optics

Scout offers multiple lens options for you. Frosted lens for maximum output, Milky lens for visible hot-spot free illumination and a 10 degree grazer to make those textured walls pop.

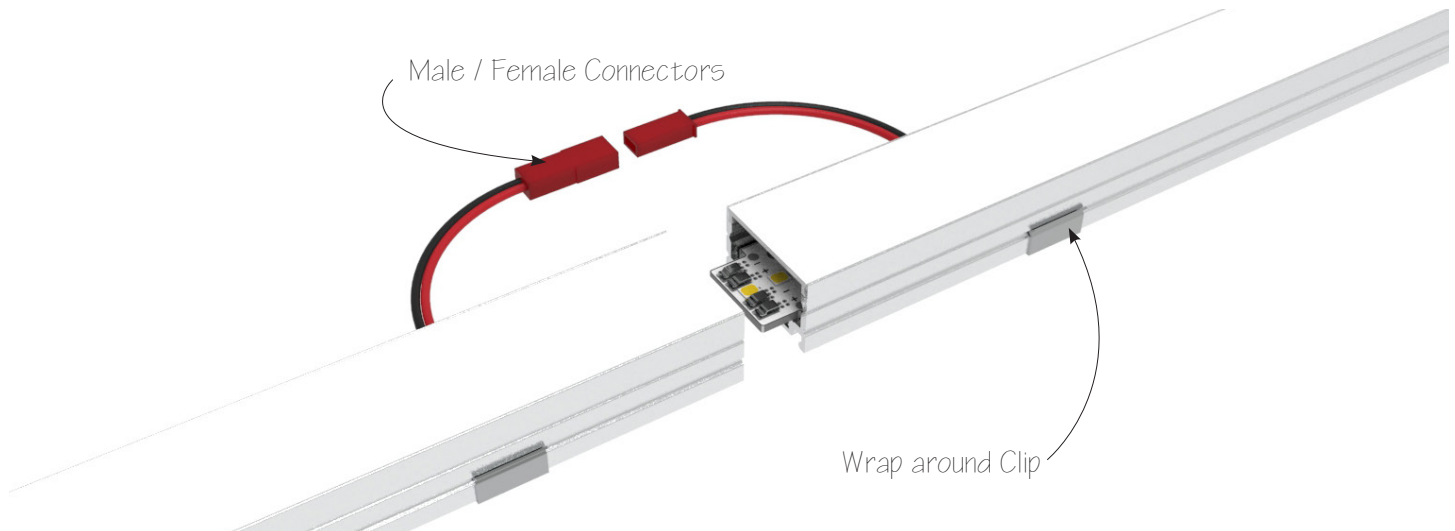




Feed Options



Blind Cove Option



Scout offers a blind cove option for those hard to reach and see installs. The wrap around clip makes mounting a breeze and male / female connectors help make connections when you can't see.

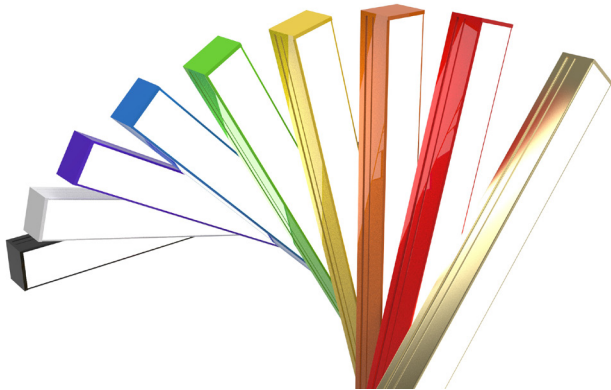




SCOUT LIGHTING
Designed - Built - Shipped - New York

SLIM FIXTURE STATIC WHITE

Finish

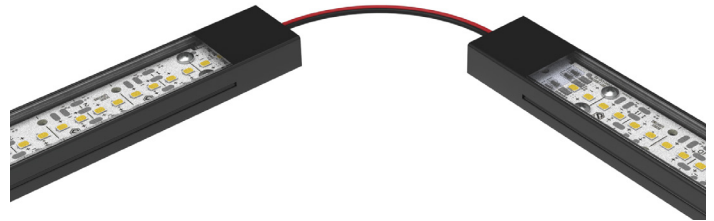


Powder Coat any Scout Fixture to any RAL #
Scout Fixtures come standard Mill Finish Aluminum

Your Fixture. Your Design. Customized.

Price Adder for Powder Coating

Jumpers



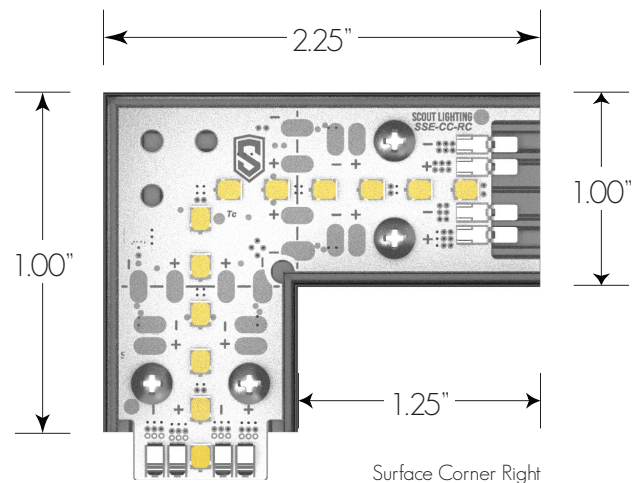
Whether you're turning an angle or daisy chaining the Scout Fixtures can be connected with any length of wire you choose.

Patterns



Scout fixtures come completely preassembled.
All the installers need to do is simply slide them together.
New power feeds can be injected anywhere.
Never have a break in light!

Illuminated Corners



Scouts Illuminated corners come in both Left and Right Directions.

The corners snap into place with Scout Lock technology.



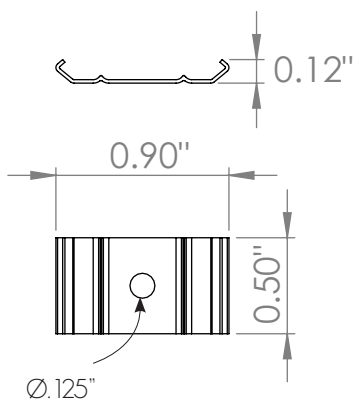


Mounting Clips



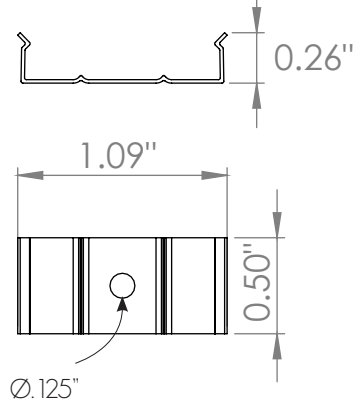
INTERNAL CLIP
PART # SMI

Ships with 1/2" #4 Screw
Use #1 Phillips Bit Driver

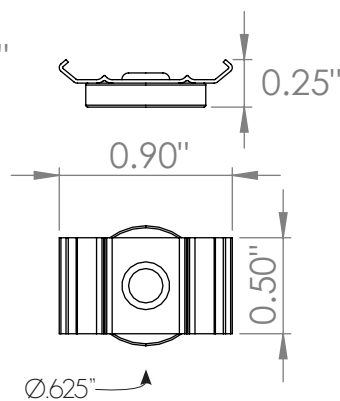


EXTERNAL CLIP
PART # SME

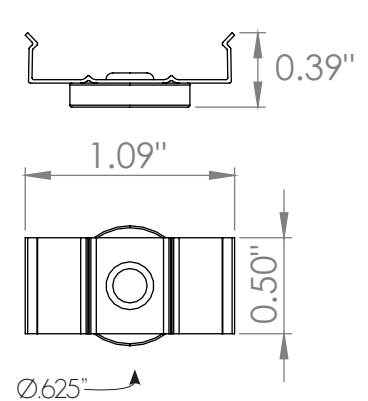
Ships with 1/2" #4 Screw
Use #1 Phillips Bit Driver



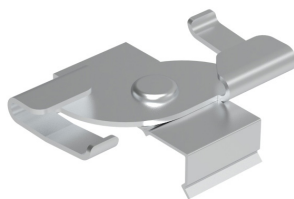
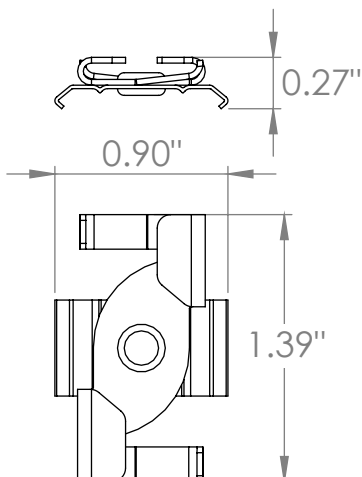
INTERNAL MAGNETIC
PART # SMIMAG



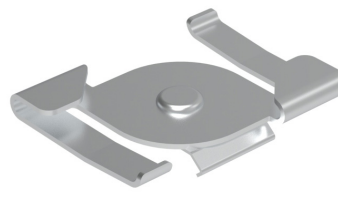
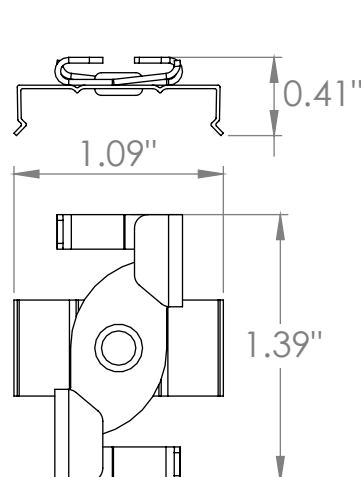
EXTERNAL MAGNETIC
PART # SME MAG



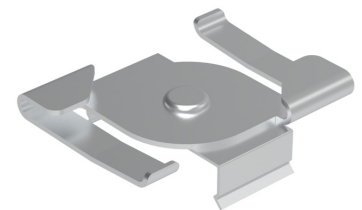
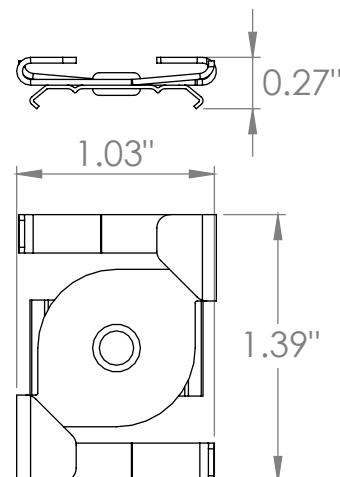
9/16 T GRID - INTERNAL
PART # SMIT9/16



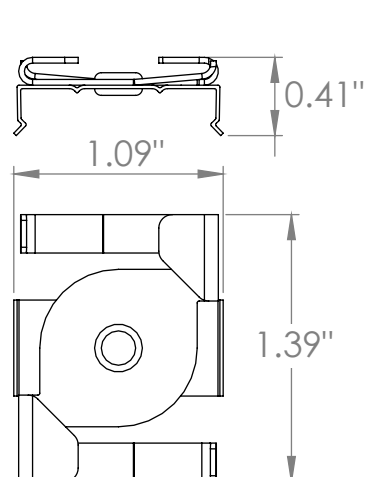
9/16 T GRID - EXTERNAL
PART # SMIT15/16



15/16 T GRID - INTERNAL
PART # SMET15/16

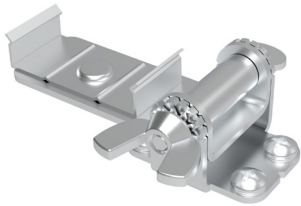


15/16 T GRID - EXTERNAL
PART # SMET15/16



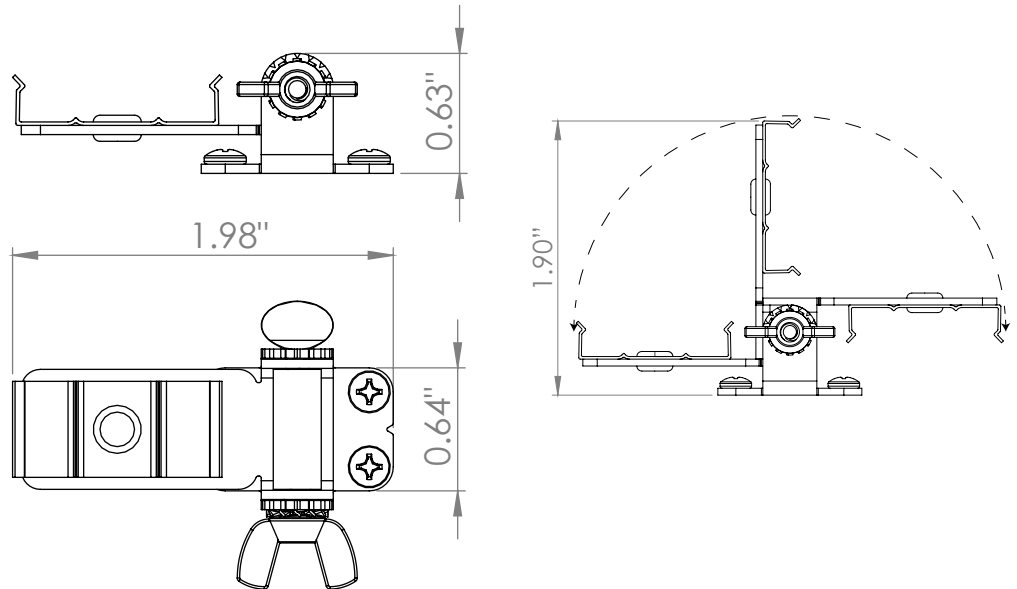


Tiltable Stand



TILTABLE STAND PART # SMETILT

Ships with 2 @ 1/2" #4 Screw
Use #1 Phillips Bit Driver

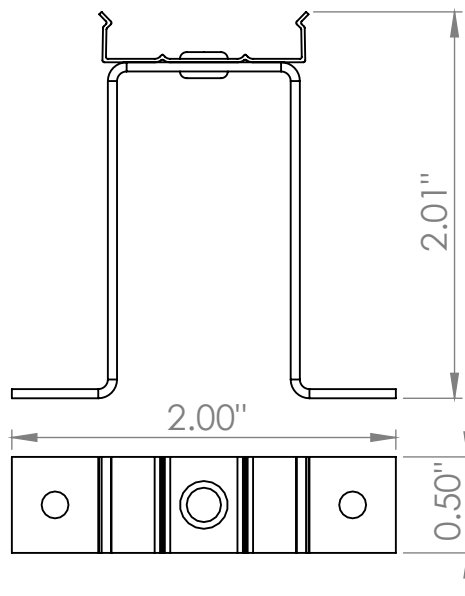


Elevated Stand

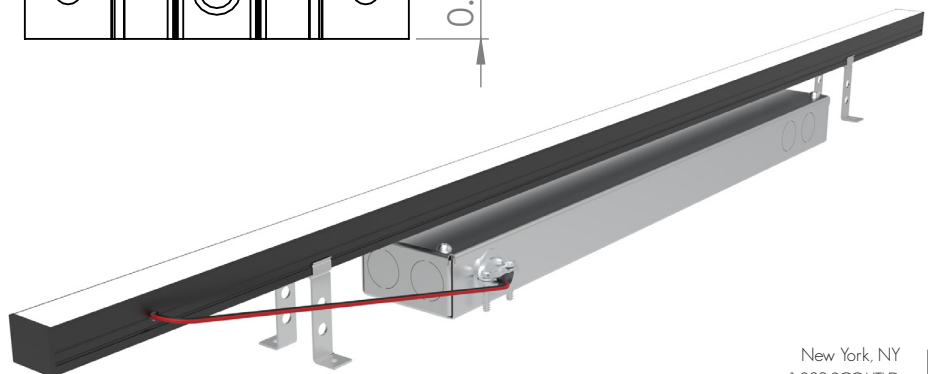


ELEVATED CLIP PART # SMEELV

Ships with 2 @ 1/2" #4 Screw
Use #1 Phillips Bit Driver

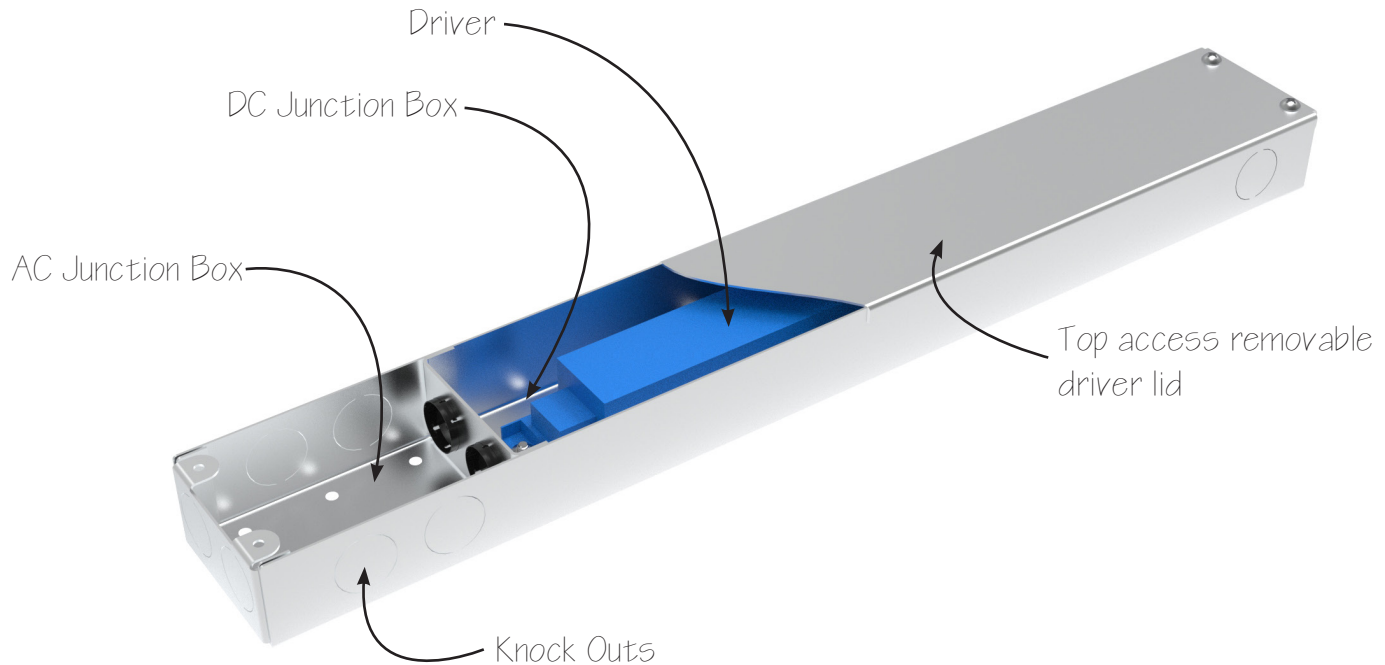


Elevate your Scout Fixture
above your driver for simple wiring
and installation`





Drivers



All scout drivers come preinstalled inside of NEMA rated enclosures. Our proprietary driver enclosures come with AC and DC Junction boxes and knockouts around the perimeter. Contractors can use our AC junction box to make branch circuit connections.

Max Load (2000mA)

| | |
|--------------------|---------|
| Super Low (50mA) | 40 Feet |
| Low (89mA) | 22 Feet |
| Medium (149mA) | 13 Feet |
| High (250mA) | 8 Feet |
| Super High (300mA) | 5 Feet |

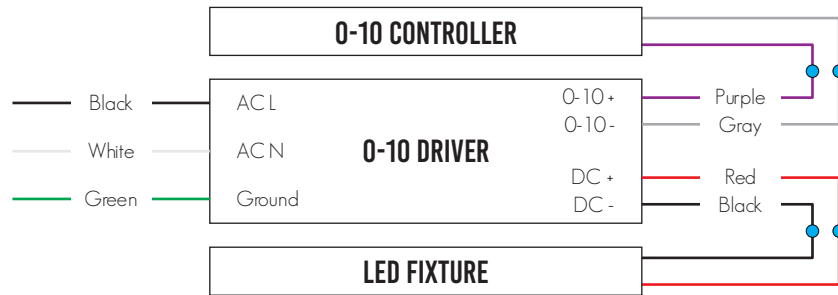
Max Distance

| | |
|--------|----------|
| 20 AWG | 20 Feet |
| 18 AWG | 40 Feet |
| 16 AWG | 60 Feet |
| 14 AWG | 100 Feet |
| 12 AWG | 150 Feet |

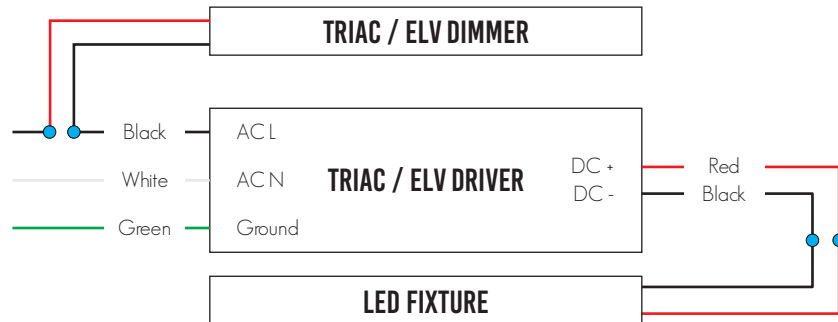




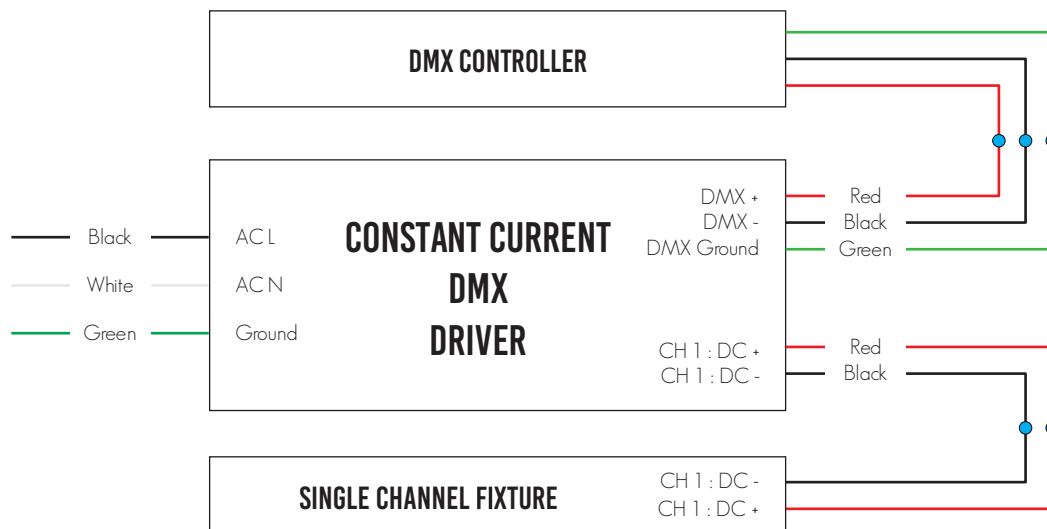
0-10 Wiring



Phase Wiring

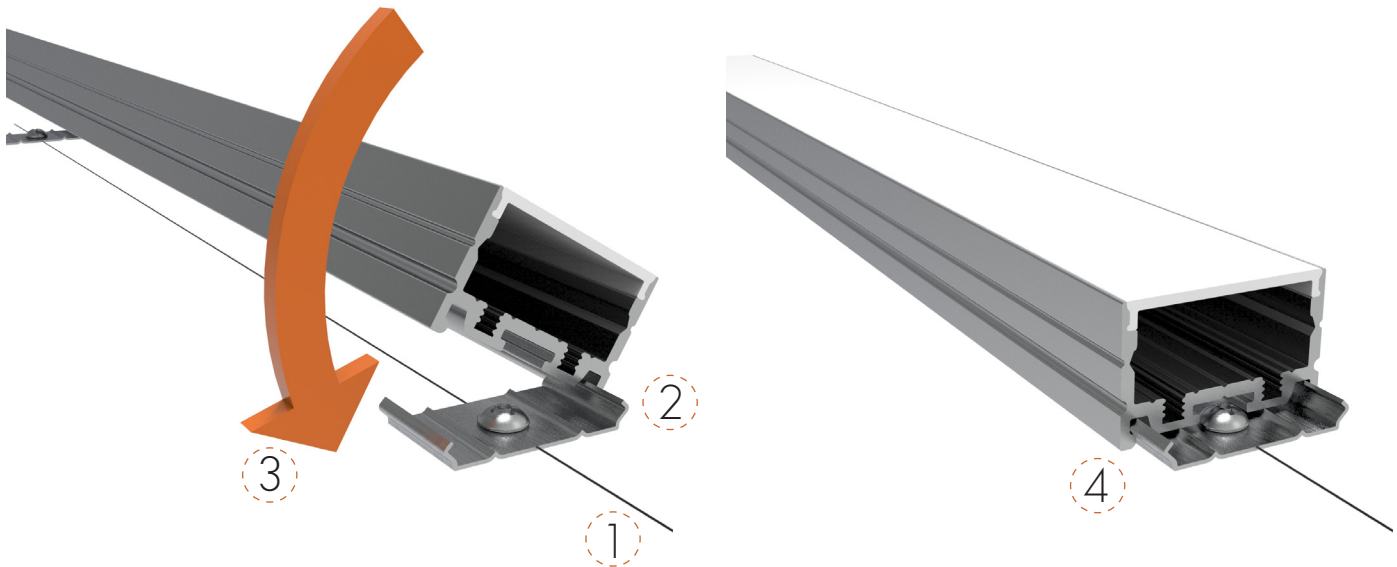


DMX Wiring



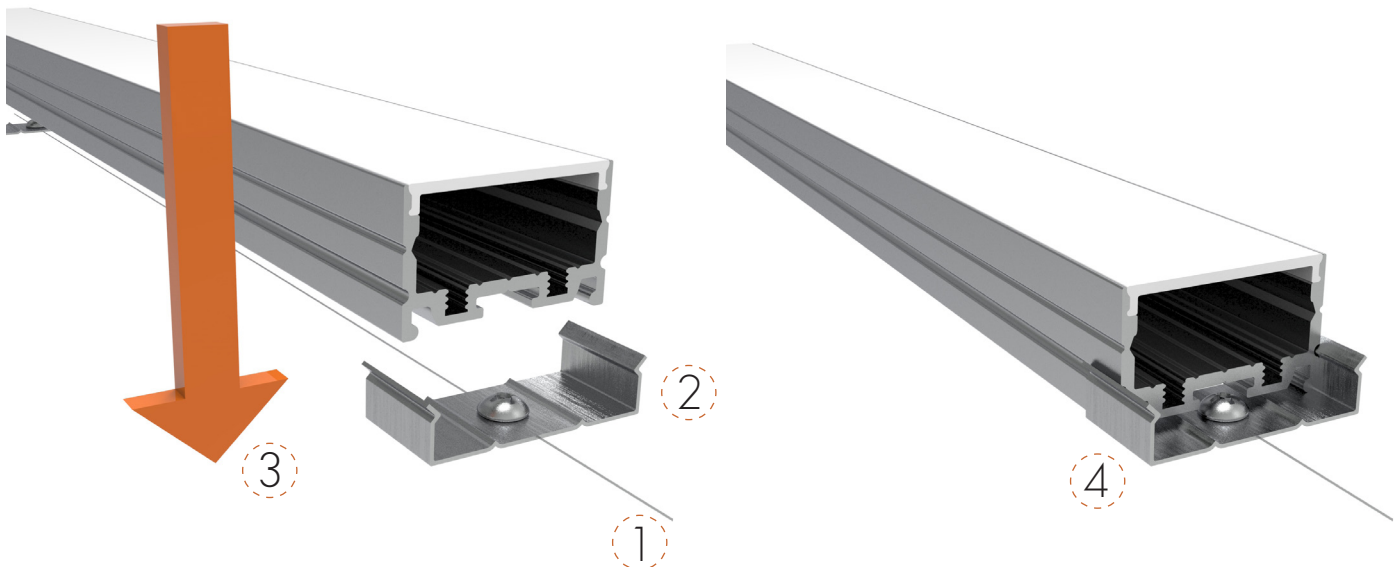


Internal Clip Install



1. Draw / Laser / Chalk a straight line and install clips on mounting plane.
2. Slide one edge of the Fixture against the clip.
3. Rotate Fixture down.
4. Snap the Fixture into the clip.

External Clip Install



1. Draw / Laser / Chalk a straight line and install clips on mounting plane.
2. Insert Fixture straight down into the Blind Clip.
3. Push Fixture down.
4. Snap the Fixture into the clip.





Specification Details

| INTENSITY | S. LOW | LOW | MEDIUM | HIGH | S. HIGH |
|---|---|---------|---------|--------|---------|
| Watts / Foot | 1.6 | 2.8 | 4.8 | 8.3 | 9.8 |
| mA / Foot | 50 | 89 | 149 | 256 | 300 |
| Frosted Lens: Lumens/ Foot | 219 | 388 | 644 | 1092 | 1273 |
| Frosted Lens: Lumens/ Watt ¹ | 139 | 138 | 135 | 131 | 129 |
| Color Temperatures (K) | 2200, 2700, 3000, 3500, 4000, 5000 | | | | |
| CRI | 90+ | | | | |
| R9 | 50+ | | | | |
| MacAdams Ellipses | 3 Steps | | | | |
| Beam Angle ² | 120 Degrees | | | | |
| IP Rating | IP20 - Dry Location | | | | |
| Lamp Life | 50,000 Hours | | | | |
| Dimming / Control ³ | 0-10 / POE / DMX / DALI / PHASE / LUTRON | | | | |
| Operating Temperature | -13°F to 122°F | | | | |
| Warranty | 5 Years | | | | |
| Max Driver Load at 2A | 40 Feet | 22 Feet | 13 Feet | 8 Feet | 5 Feet |
| ETL | Conforms To UL STD 2108 - Certified To CSA STD C22.2 # 2500 | | | | |

| CCT | LUMINOUS FLUX |
|-------|---------------|
| 2200K | 82% |
| 2700K | 100% |
| 3000K | 100% |
| 3500K | 115% |
| 4000K | 118% |
| 5000K | 106% |

LUTRON

LDEI Hi-Lume 1% EcoSystem. Soft On, Fade to Black

L3DAE Hi-Lume 1% EcoSystem

L3DA3W Hi-Lume 1% 3 WIRE+G

LTEA Hi-Lume 1% 120V. 2-WIRE Forward Phase

Ordering Details

- All fixtures come standard with starter end cap feed unless otherwise specified.
- All Scout Select Fixtures come preassembled up to 8 feet long with 8" power feed.
- Any Fixture length under 8 feet long will be made as a complete fixture.
- Any Fixture length over 8 feet long will be broken into 6 foot lengths + the balance length.
I.E. A 10 Foot Fixture will be broken into 1 length @ 6 Feet and 1 @ 4 Feet.
- Fixtures daisy chain together with Scout_Lock™ Technology. See figures 1.1 and 1.2 below.
- In situations where fixtures are longer then the maximum wattage load new power will be injected from either the side or rear. Standard Injection is side Feed 1.
- All orders come with an approval drawing. Fabrication will not begin until drawing has been signed off or waived.

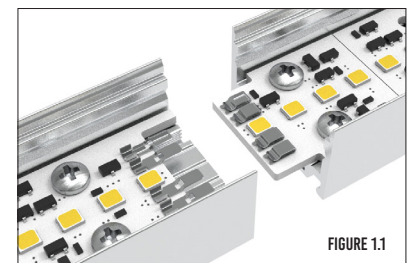


FIGURE 1.1

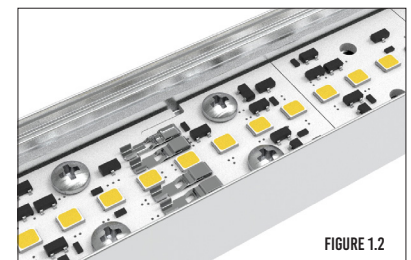


FIGURE 1.2

¹ Lumens / Watt takes into account nominal driver efficacy at full load

² Beam Angle with Milky Lens

³Not all dimmers / drivers compatible contact factory for testing

