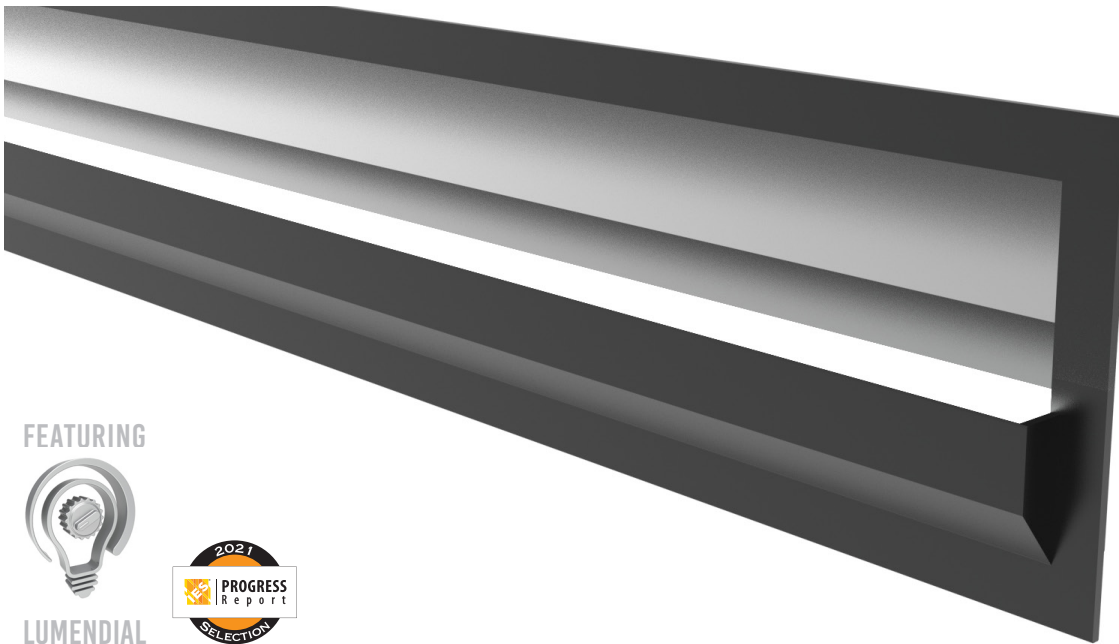




**SCOUT LIGHTING**  
Designed - Built - Shipped - New York

**LIGHT/Slice**  
**TUNEABLE WHITE**

Project : \_\_\_\_\_ Firm : \_\_\_\_\_ Type : \_\_\_\_\_ Quantity: \_\_\_\_\_



AMERICAN MADE



Intertek  
5011600

**WARRANTY**

5 Years

**EFFICACY**

150 Lm / Wt

**MACADAM**

3 Step

**CRI**

90+

**R9**

50+

FEATURING



LUMENDIAL



## Features

- Fully Assembled
- Rigid Scout Engines
- Cuttable to 1/2 Inch
- Shop drawings for all orders
- Easy Plug and play system
- LumenDial allows you to dial in any lumen output
- Designed for the Contractor
- Solderless Connections
- No Visible hot-spots - ever (with milky lens)
- Endless runs - Inject new power feeds at any point

## Applications

- Wall Washing

## Mounting

- In Wall
- In Ceiling

2200

2700

3000

3500

4000

5000

## Part # Builder

LS	+		+		+		+		+		+	
Prefix	+	Lens	+	Intensity <sup>1</sup>	+	CCT	+	Finish <sup>2</sup>	+	Control	+	Wire length <sup>5</sup>
LightSlice Fixture		FF - Flat Frosted Visible Diodes FM - Flat Milky No Imaging		SL - Sup. Low L - Low M - Medium H - High SH - Sup. High LD - Lumen Dial <sup>1</sup>		22-35K Tuneable White		M - Mill W - White B - Black Custom RAL #		0 - None 1 - 0-10 2 - DMX 3 - POE 4 - Phase 5 - Lutron digital T-Series 1% 2-Channel (Quantum/Athena controls)		12" 24" 48" 96" Custom

<sup>1</sup> LumenDial : Custom Output : The Scout Engines can be programmed for any lumen output from 1 to 1,400 lumens per foot. Contact Factory for more info.

<sup>2</sup> Finish : Mill Finish comes standard. Cost Adder for Powder Coating. Contact Factory for Custom RAL#.

<sup>3</sup> Feed : See Feed details on page 4

<sup>4</sup> See Blind Cove details on page 5.

<sup>5</sup> Wire Length : Standard 12"

<sup>6</sup> Ordering info on page 9.





**SCOUT LIGHTING**  
Designed - Built - Shipped - New York

**LIGHT/Slice**  
**TUNEABLE WHITE**

## SCOUT RECOGNIZED 2021 IES PROGRESS REPORT



"Scout has released its Select Linear Accent Lighting Line as the first linear accent lighting product that is cuttable every 1/2-inch with the ability to burn in a specific lumen and wattage output at time of assembly. The client is able to choose from 1 to 1400 lumens per linear foot. Their proprietary boards have low-profile male / female connectors and the engines are designed with side and rear feed points every inch." - IES Progress Report

### OUR PHILOSOPHY

At Scout, everything we do is driven by three simple philosophies:

- We do the job that needs to be done.
- If something isn't perfect we'll do it again, regardless of time.
- We design what we love and love what we design.

We proudly stand on the front-line of the industry - taking risks to achieve superior and simpler product. **THIS IS THE WAY OF THE SCOUT.**



### LUMEN\_DIAL

**ANY LUMEN VALUE: BETWEEN 1 - 1,400 PER FOOT**  
**ANY WATTAGE: BETWEEN 0.1 - 10 PER FOOT**  
**DIALED IN TO YOUR SPECIFICATION**

Scout's proprietary award-winning light engines have the ability to dial in any intensity or wattage you desire without changing a thing on the engine. We can guarantee you'll never have a hot spot or shadow again.

**QUICKSHIP**   
**7-10 DAYS**

Designed • Built • Shipped  
**NEW YORK**

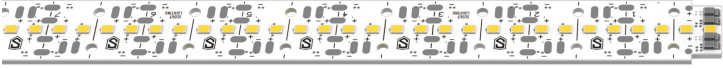




**SCOUT LIGHTING**  
Designed - Built - Shipped - New York

*LIGHT/Slice*  
**TUNEABLE WHITE**

# THE SCOUT ENGINES - THE HEART OF EVERY FIXTURE



**STATIC WHITE**



**TUNEABLE WHITE**



**RGB WHITE**

SCOUTS AWARD-WINNING RIGID ENGINES HAVE BEEN EXPANDED TO INCLUDE TUNEABLE WHITE AND RGB

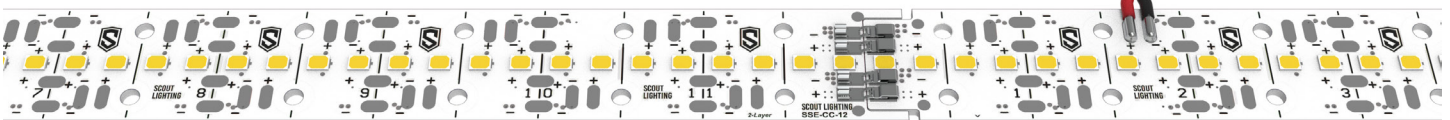


**LIMITLESS LIGHT**

**POWER WHERE YOU NEED IT**

Our propriety patented engines feature solderless connectors and low-profile male / female connectors, enabling simple snap-together installation. Throw in the ability to inject power from either side or the rear, and we can offer you limitless runs without ever having a break in your light.

**PERFECT\_PITCH**





## Quick Specifications

### LED SYSTEM

Proprietary linear LED Scout Engine incorporates premium Cree LEDs on a robust platform to achieve excellent thermal management. LEDs are placed to promote a uniform appearance.  
Available in 2200K, 2700K, 3000K, 3500K, 4000K or 5000K in 90+ CRI. LED modules and drivers are replaceable.  
Color accuracy <3 SDCM

### CONSTRUCTION

One piece extruded aluminum housing. Cast aluminum end caps.

### OPTICS

Extruded High Transmission Milky Acrylic Lens with No LED imaging.  
Extruded High Transmission Frosted Acrylic Lens with LED imaging.

### ELECTRICAL

Fixture come preassembled with 8" whip.  
All Drivers are installed in remote location.  
All drivers are Universal input 120-277 VAC.  
Standard Constant Current drivers include 0-10V dimming preinstalled in an enclosure.

### LABELS

Conforms To UL STD 2108 Certified To CSA STD C22.2 # 250.0  
Suitable for Dry or Damp Locations, indoor use only.

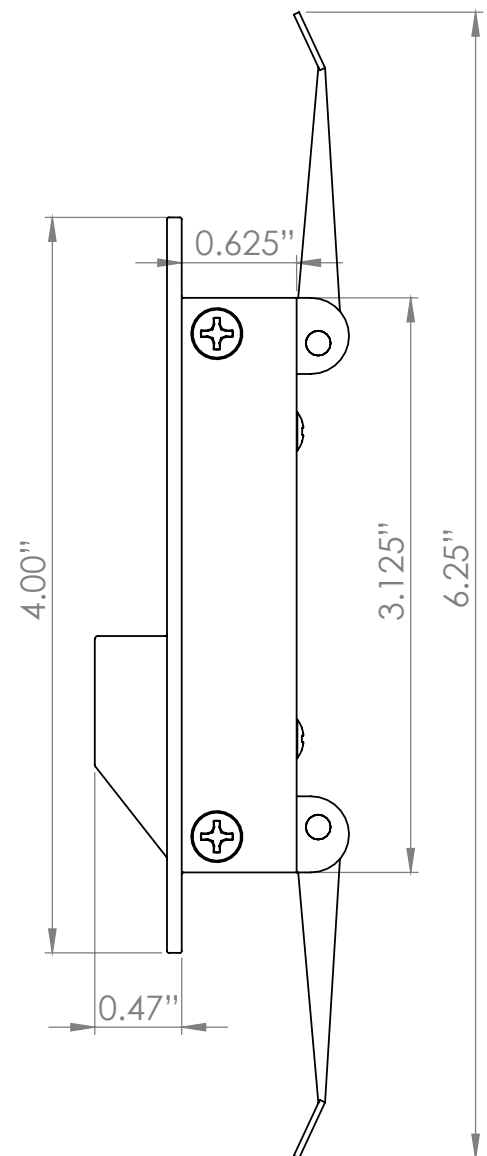
### FINISH

Standard Mill Aluminum Finish.  
Powder Coating to any RAL# available upon specification

### WARRANTY

5 Year Limited Warranty - Covers all Scout manufactured products.  
Default to manufactures warranty for all 3rd party components.

## Dimensions



### Frosted Lens : Visible Diodes - 5% Light Loss

OUTPUT	SL	L	M	H	SH
Lumens / Foot	219	388	644	1092	1273
Watts / Foot	1.6	2.8	4.8	8.3	9.8
Lumens / Watt	139	138	135	131	129

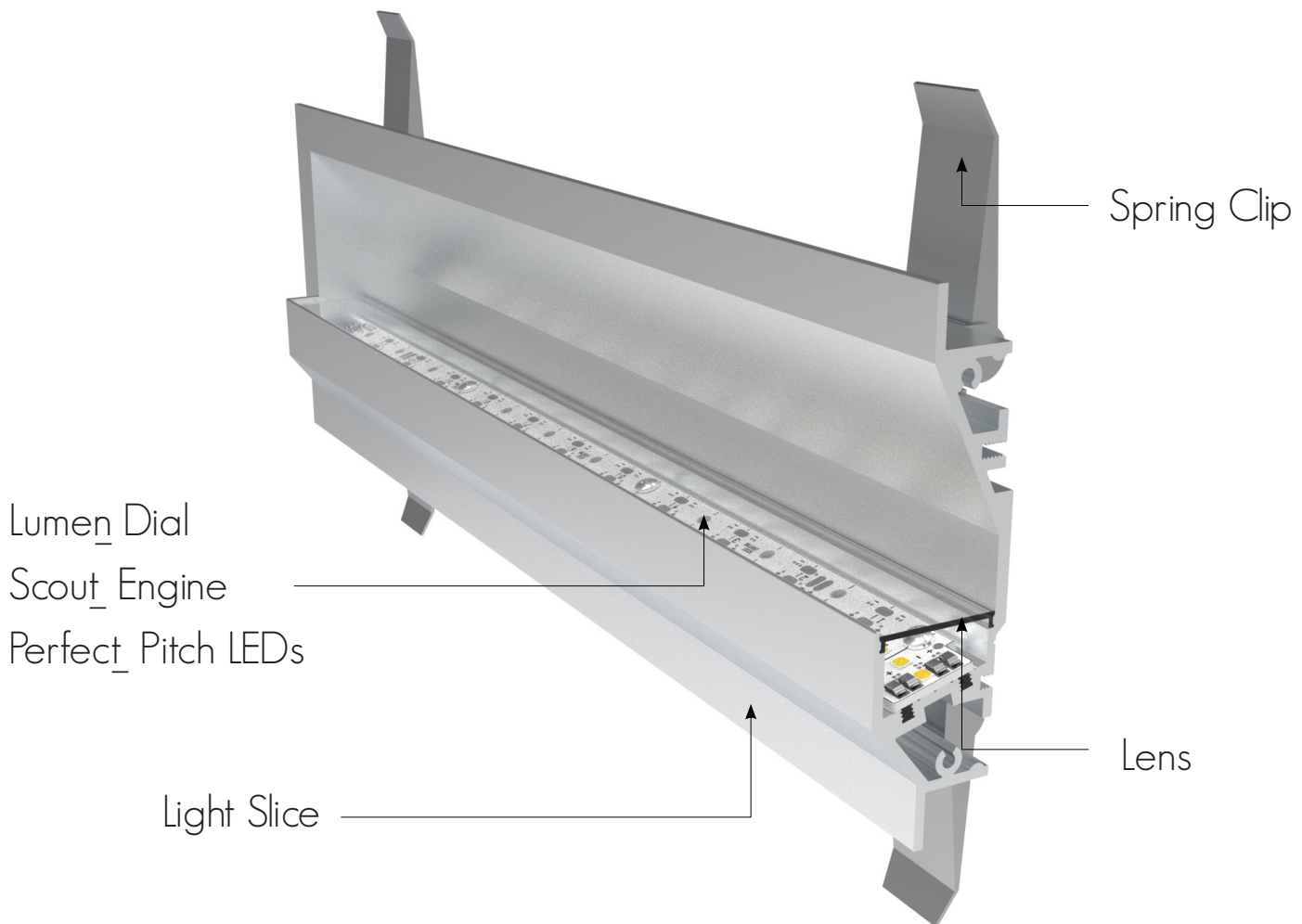
### Milky Lens : No Imaging - 50% Light Loss

OUTPUT	SL	L	M	H	SH
Lumens / Foot	115	204	339	575	670
Watts / Foot	1.6	2.8	4.8	8.3	9.8
Lumens / Watt	73	72	71	69	68





## Fixture Anatomy



### Perfect\_Pitch LEDs

Achieve an uncompromisable layer of architectural lighting at any intensity through LED spacing that never change with the intensity. This means no hot-spots and imaging when paired with the Milky lens.

### Light Slice

Designed to evenly illuminate your wall, ceiling or floor with simple integration into 5/8" sheet rock.

Each fixture is 100% custom to you.  
Pre assembled and cut to the 1/2 inch

### Lumen\_Dial

A patent pending circuit design delivers 3 separate intensities within a single engine. One engine, one pitch is the only way to simply and brilliantly bring a vision to reality.

### Lens

Scout offers multiple lens options for you. Frosted lens for maximum output, Milky lens for visible hot-spot free illumination.

### Scout\_Engine

Rigid boards Plug and Play together.

Cutttable to 1/2 Inch

### Spring Clip

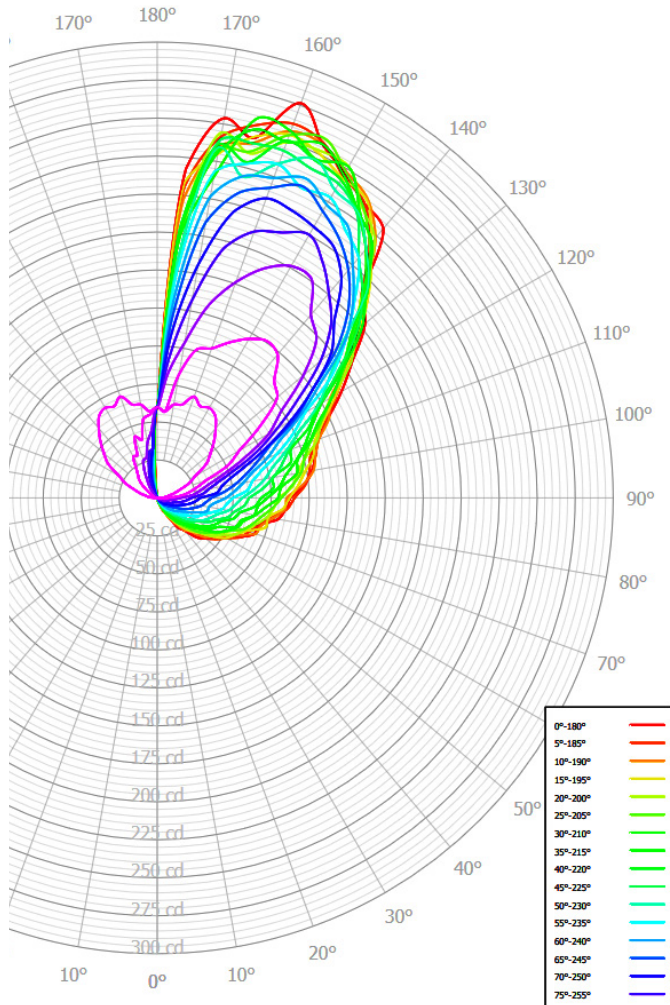
Scout's Spring clips are designed to snap your LightSlice fixture into place when mounted into 5/8" Sheet Rock!



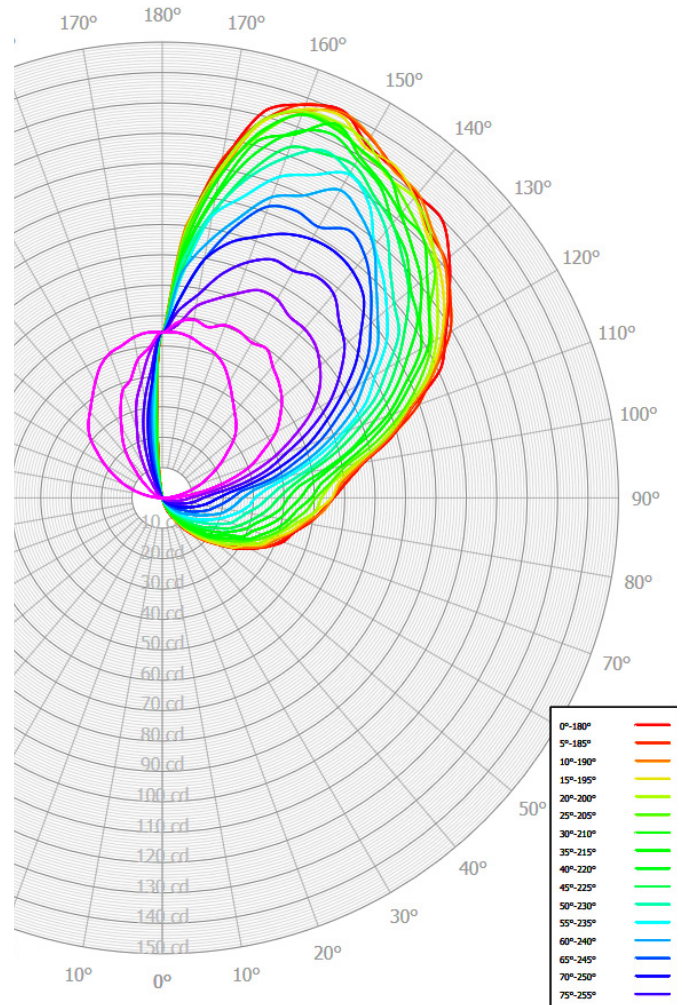




## Candela Plots



Frosted Lens



Milky Lens

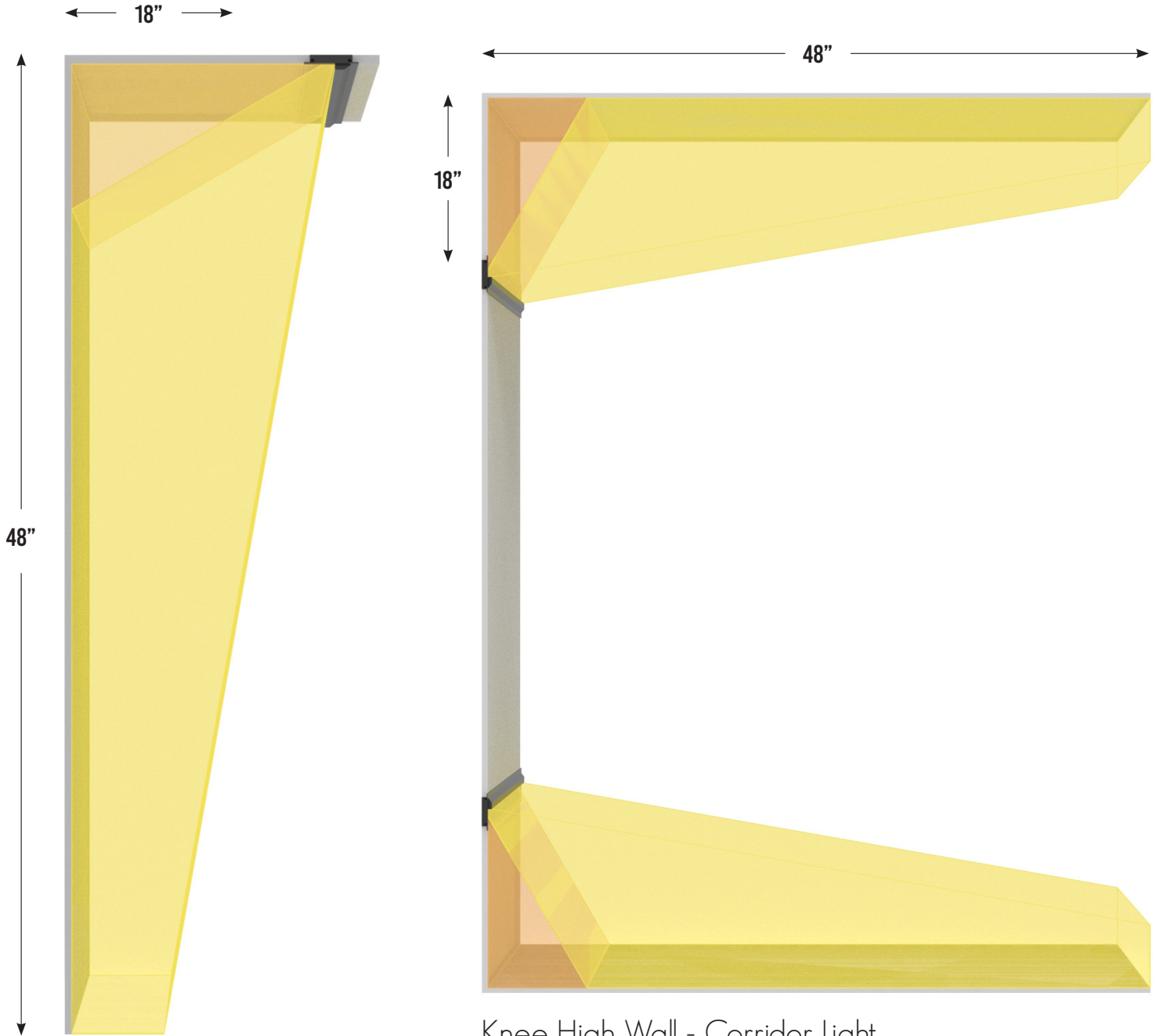
Tested at Medium Intensity - 3000K

IES Files available online at [www.ScoutLighting.com](http://www.ScoutLighting.com)





## Light Throw



Knee High Wall - Corridor Light

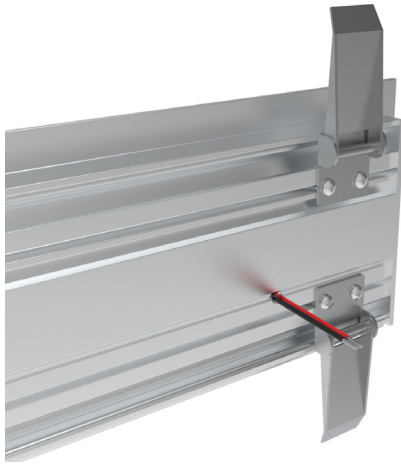




**SCOUT LIGHTING**  
Designed - Built - Shipped - New York

**LIGHT/Slice**  
**TUNEABLE WHITE**

## Feed Options



Standard Feed  
Remote Driver

Standard single driver feed comes out 2" from end of fixture!



Multi Feed  
Remote Driver

Scout can inject multiple power feeds into a single fixture length to ensure you never have a dark spot!

## Finish



Powder Coat any Scout Fixture to any RAL #  
LightSlice come standard in Gloss White.

Your Fixture. Your Design. Customized.

## Lumen Dial



Scout's propriety Scout Engine can be dialed into any lumen or wattage value.

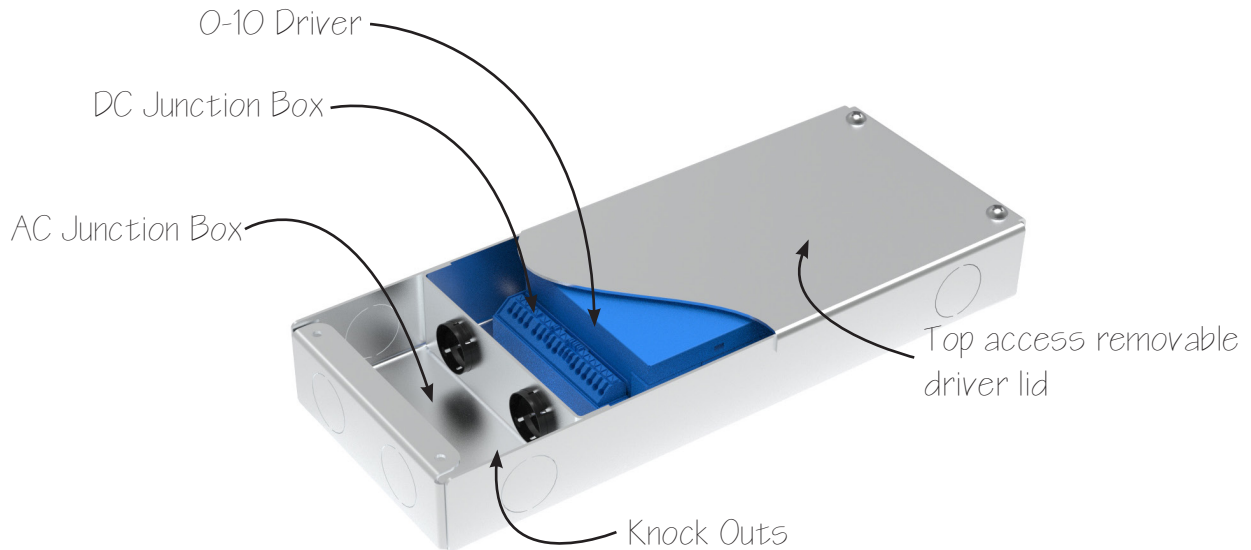
From 1 Lumen to 1,400 per foot!







## Drivers



All scout drivers come preinstalled inside of NEMA rated enclosures. Our proprietary driver enclosures come with AC and DC Junction boxes and knockouts around the perimeter. Contractors can use our AC junction box to make branch circuit connections.

### Max Load (2000mA)

Super Low (50mA)	40 Feet
Low (89mA)	22 Feet
Medium (149mA)	13 Feet
High (250mA)	8 Feet
Super High (300mA)	5 Feet

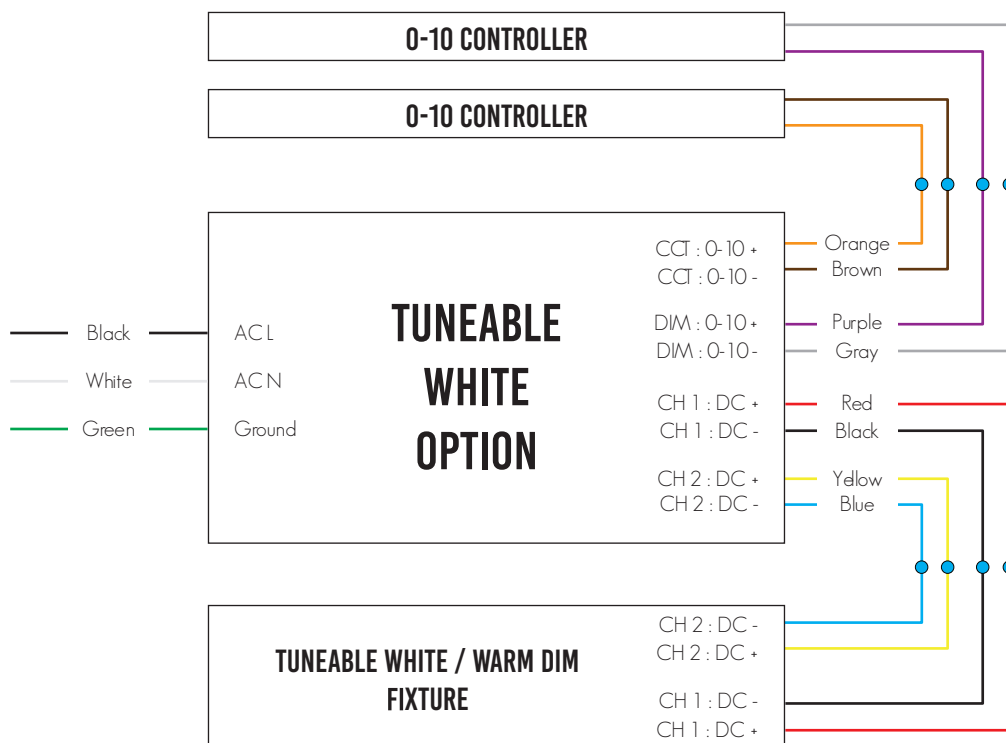
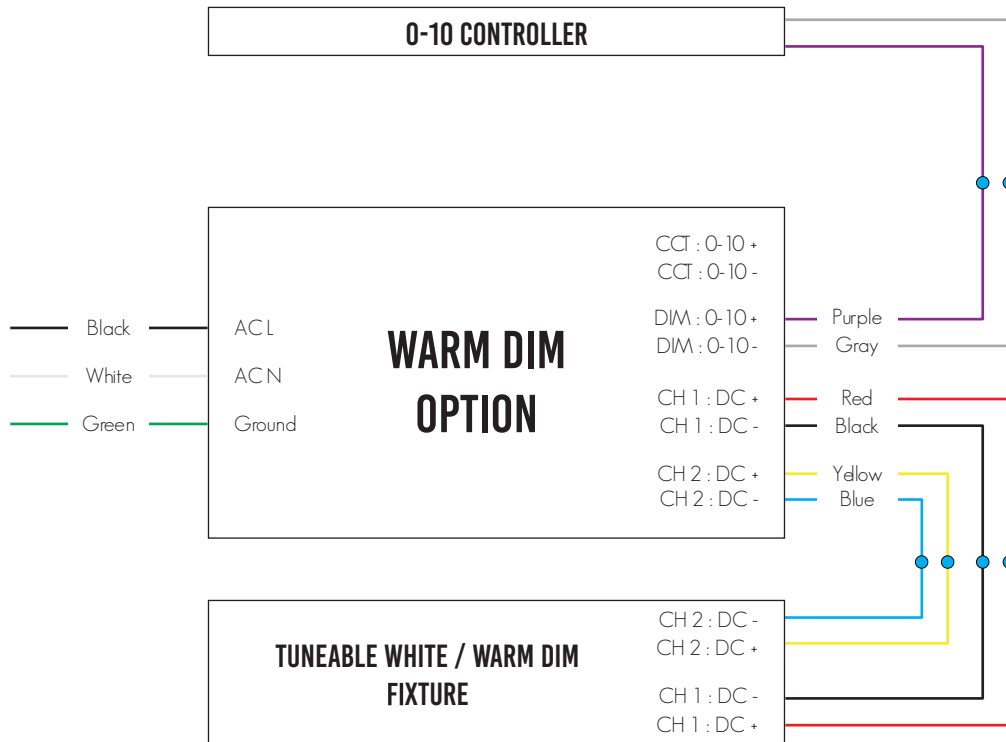
### Max Distance

20 AWG	20 Feet
18 AWG	40 Feet
16 AWG	60 Feet
14 AWG	100 Feet
12 AWG	150 Feet



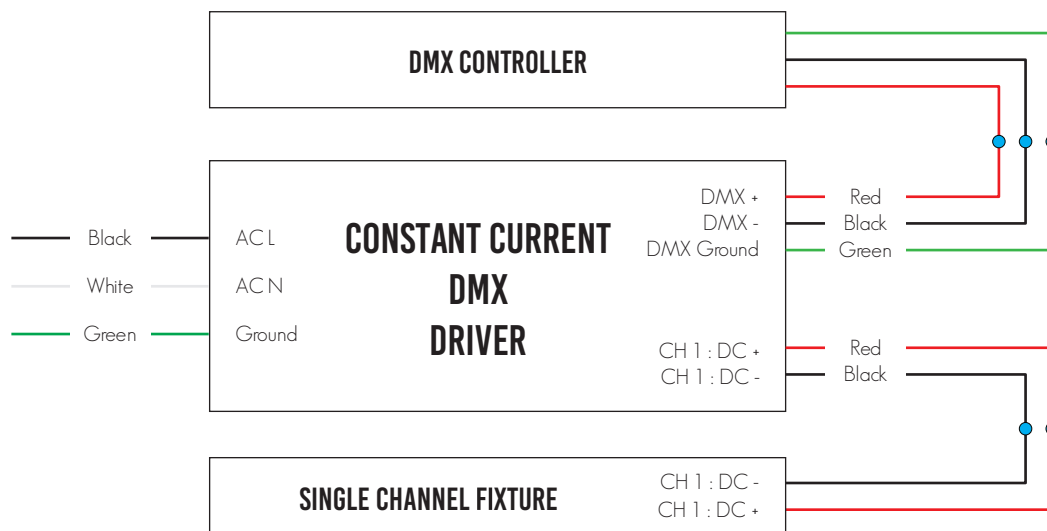
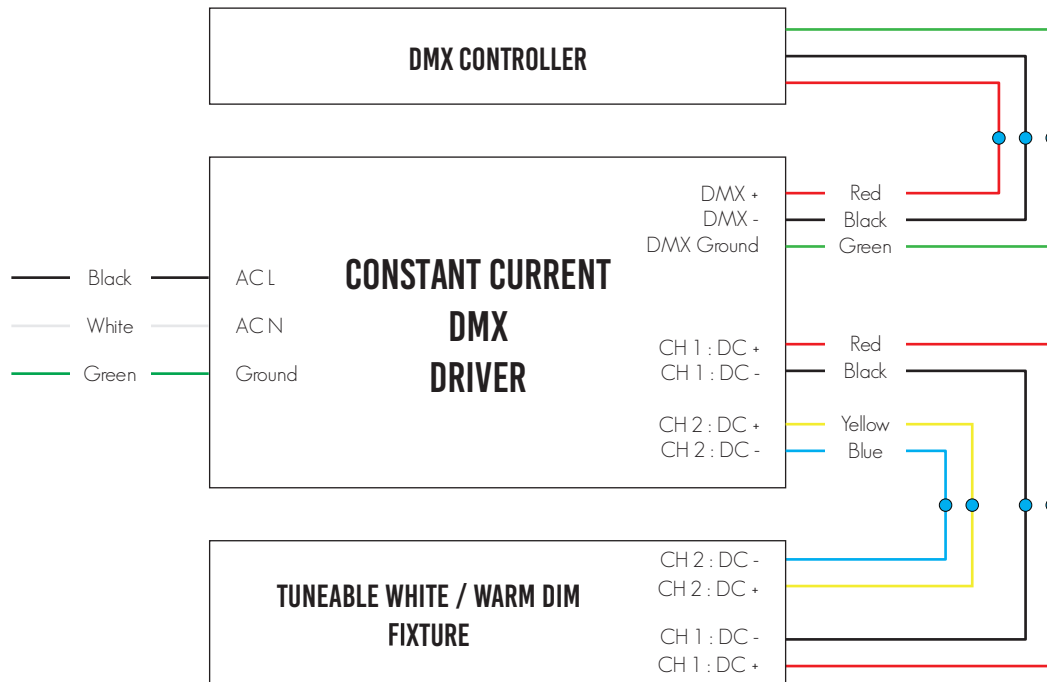


## 0-10 Wiring





## DMX Wiring





## Specification Details

INTENSITY	S. LOW	LOW	MEDIUM	HIGH	S. HIGH	CCT	LUMINOUS FLUX
Watts / Foot	1.6	2.8	4.8	8.3	9.8	2200K	82%
mA / Foot	50	89	149	256	300	2700K	100%
Frosted Lens: Lumens/ Foot	219	388	644	1092	1273	3000K	100%
Frosted Lens: Lumens/ Watt <sup>1</sup>	139	138	135	131	129	3500K	115%
Milky Lens: Lumens/ Foot	115	204	339	575	670	4000K	118%
Milky Lens: Lumens/ Watt <sup>1</sup>	73	72	71	69	68	5000K	106%
Color Temperatures (K)	2200 - 3500K						
CRI	90+						
R9	50+						
MacAdams Ellipses	3 Steps						
Beam Angle <sup>2</sup>	120 Degrees						
IP Rating	IP20 - Dry Location						
Lamp Life	50,000 Hours						
Dimming / Control <sup>3</sup>	0-10 / POE / DMX / DALI / PHASE / LUTRON						
Operating Temperature	-13°F to 122°F						
Warranty	5 Years						
Max Driver Load at 2A	40 Feet	22 Feet	13 Feet	8 Feet	5 Feet		
ETL	Conforms To UL STD 2108 - Certified To CSA STD C22.2 # 2500						

### LUTRON

PSQ0

Lutron digital T-Series 1%  
2-Channel (Quantum/  
Athena controls)

## Ordering Details

- All fixtures come standard with starter end cap feed unless otherwise specified.
- All Scout Select Fixtures come preassembled up to 8 feet long with 8" power feed.
- Any Fixture length under 8 feet long will be made as a complete fixture.
- Any Fixture length over 8 feet long will be broken into 6 foot lengths + the balance length.  
I.E. A 10 Foot Fixture will be broken into 1 length @ 6 Feet and 1 @ 4 Feet.
- Fixtures daisy chain together with Scout\_Lock™ Technology. See figures 1.1 and 1.2 below.
- In situations where fixtures are longer than the maximum wattage load new power will be injected from either the side or rear. Standard Injection is side Feed 1.
- All orders come with an approval drawing. Fabrication will not begin until drawing has been signed off or waived.

<sup>1</sup> Lumens / Watt takes into account nominal driver efficacy at full load

<sup>2</sup> Beam Angle with Milky Lens

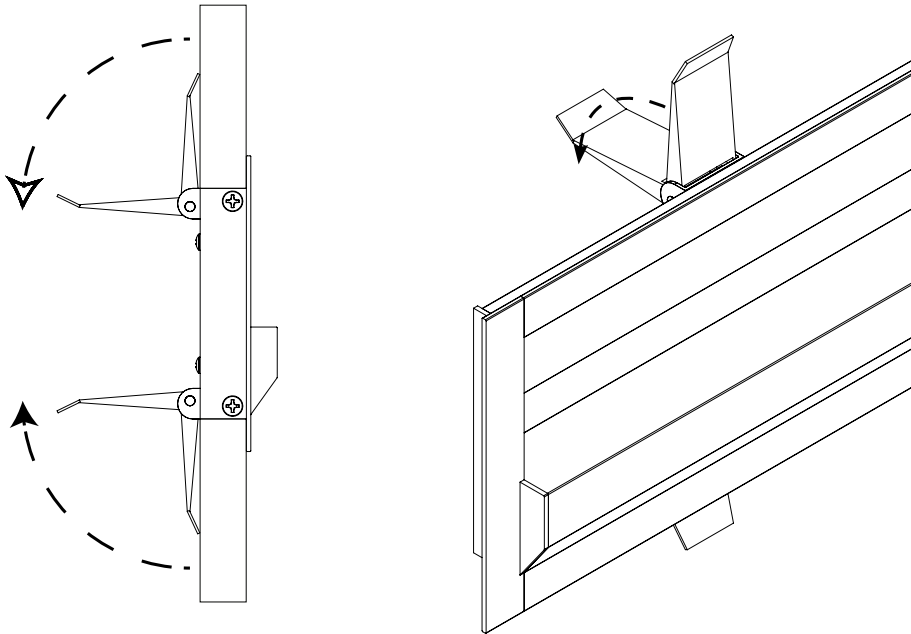
<sup>3</sup> Not all dimmers / drivers compatible contact factory for testing





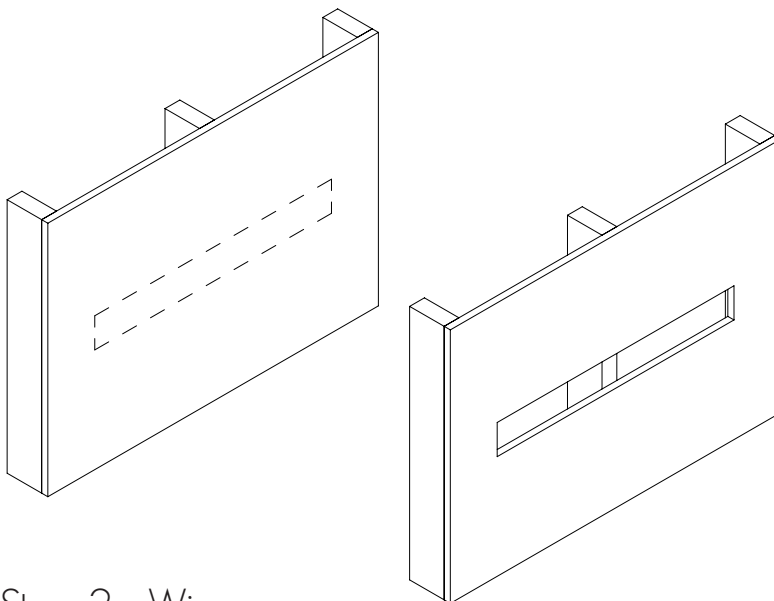
## Installation

### Function



Spring clips rotate down to  
slide into wall

### Step 1 - Make Slot



Cut a straight level slot out of a 5/8" thick  
piece of sheet rock

Slot should be 3.125" High by the length of  
the fixture + 1/4 of an inch..

### Step 2 - Wire

Splice your wire that was run from the remote driver to the back of the LightSlice feed.

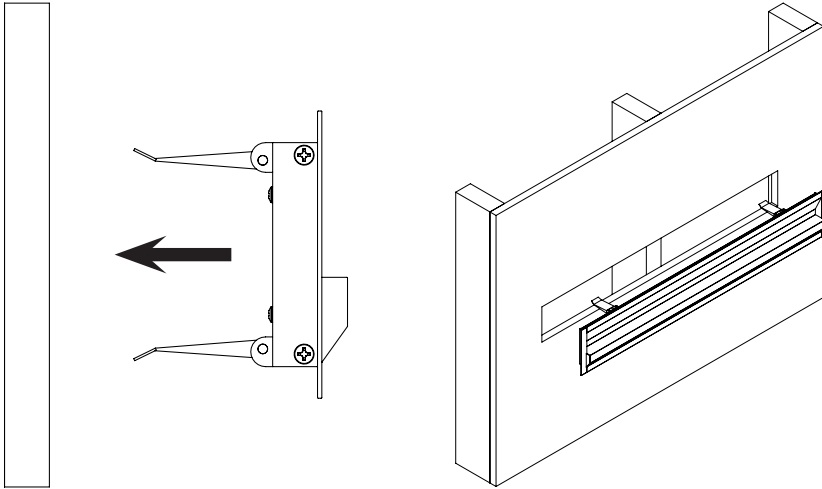






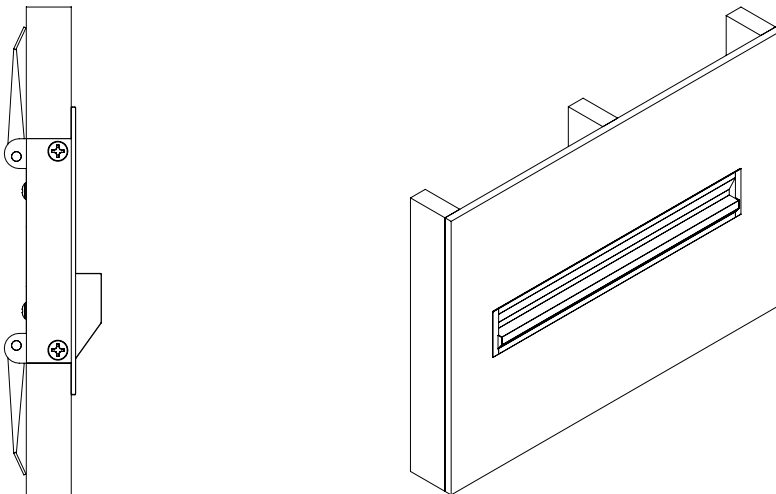
## Installation

### Step 3 - Install - Clips Down



Bring the Spring Clips to their lowest position and slide the fixture into the wall.

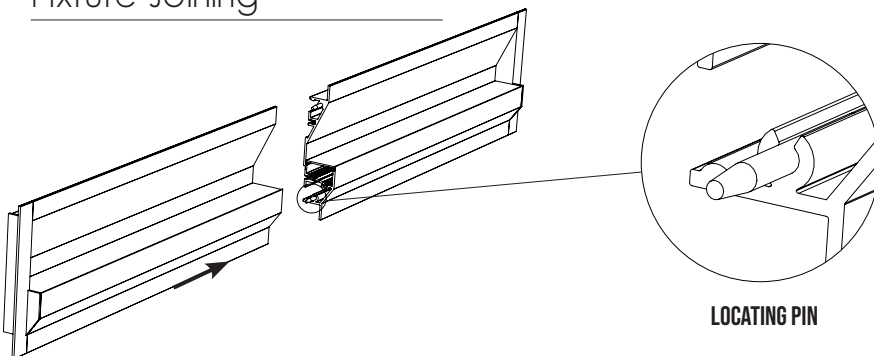
### Step 4 - Install - Clips Up



The Spring Clips will automatically spring open holding the LightSlice in the wall.

To Remove the fixture v

### Fixture Joining



The LightSlice fixtures have alignment pins preinstalled. Simply slide the units together.

