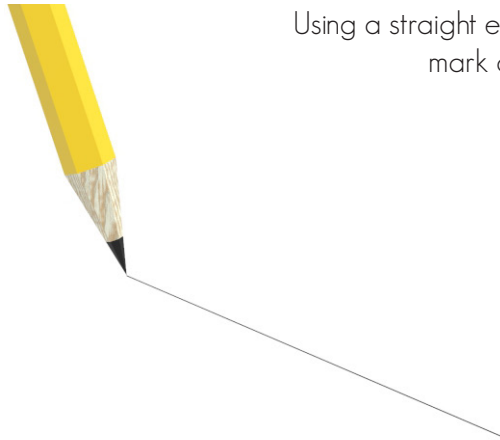
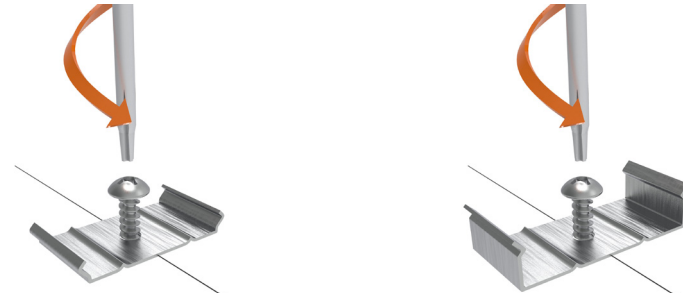


### Step 1 : Mark a straight line



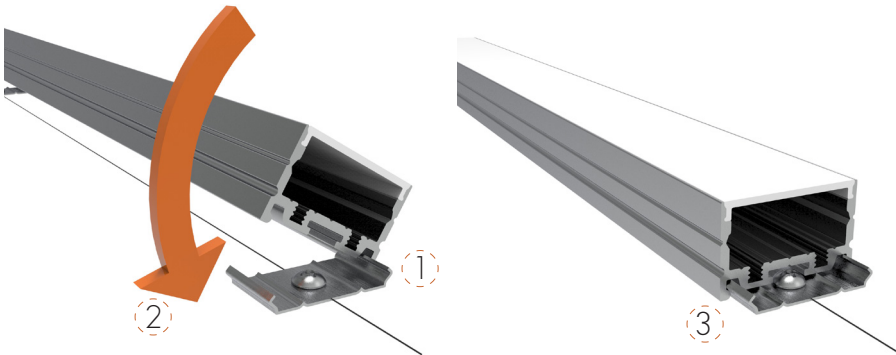
Using a straight edge, laser, chalk line or other device mark a straight line on the mounting plane.

### Step 2 : Screw clips down



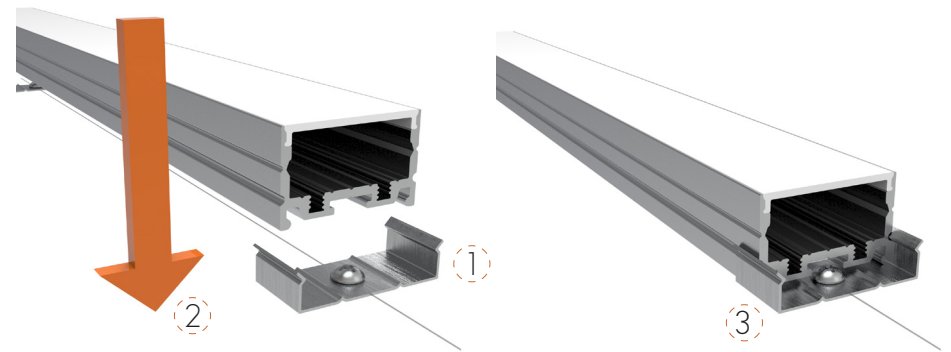
Mounting clips ship with #4 screw. Using a philips #1 philips head screw driver mount clips to mounting plane.

### Step 3 : Flush Clip Install



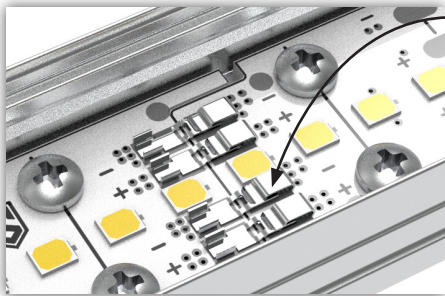
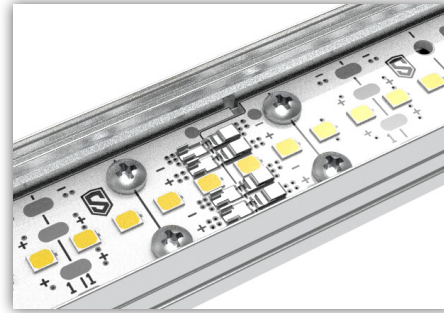
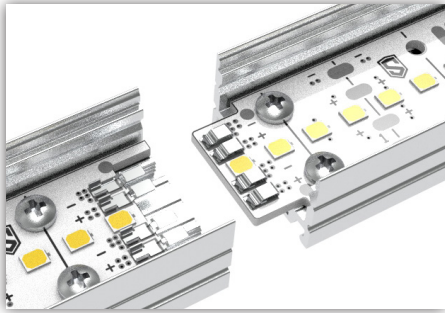
1. Slide one edge of the Fixture against the clip.
2. Rotate Fixture down.
3. Snap the Fixture into the clip.

### Step 3: Blind Clip Install



1. Insert Fixture straight down into the Blind Clip.
2. Push Fixture down.
3. Snap the Fixture into the clip.

## Step 4 : Lock fixtures together



The Scout Lock™ board connectors slide and lock into each other

Ensure the male connector is inserted and locked into the female connector.

Failure to do so can result in interoperability of the Light Engine.

## Driver Wiring

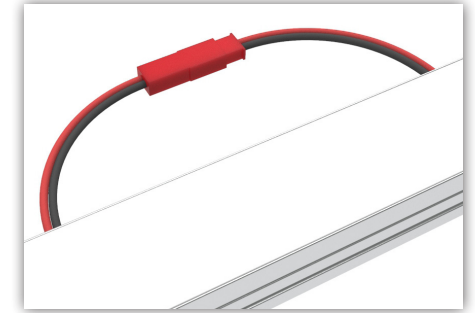
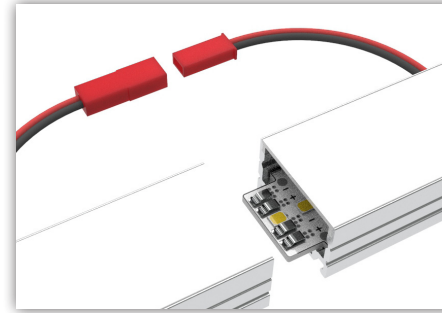
<b>GREEN</b>	<b>120 - 277 VAC 50/60HZ</b>	<b>DIM 0-10</b>	<b>GRAY (0-10 -)</b>
<b>BLACK (L)</b>			<b>PURPLE (0-10 +)</b>
<b>WHITE (N)</b>		<b>LED</b>	<b>BLACK (V-)</b>
			<b>RED (V+)</b>

Scout Fixtures come pre-installed 8" whip.

Red Wire = DC V+

Black White = DC V-

## Step 4: Blind Cove Joining



## Remote Driver Distance

Max Distance at Full Load @ 2000 mA

18 AWG	16 AWG	12 AWG
40 Feet	60 Feet	150 Feet

## Remote Driver Load

Max Driver Load at 2000 mA

2.5w (85ma)	5.0w (145ma)	10.0w (250 ma)
23 Feet	13 Feet	8 Feet