



Quick Specifications

LED SYSTEM

Proprietary linear LED Scout Engine incorporates premium Cree LEDs on a robust platform to achieve excellent thermal management. LEDs are placed to promote a uniform appearance.
Available in 2200K, 2700K, 3000K, 3500K, 4000K or 5000K in 90+ CRI. LED modules and drivers are replaceable.
Color accuracy <3 SDCM

CONSTRUCTION

One piece extruded aluminum housing. Cast aluminum end caps.

OPTICS

Extruded Optic
Optics cut to 1" increments

ELECTRICAL

Fixture come preassembled with 8" whip.
All Drivers are installed in remote location.
All drivers are Universal input 120-277 VAC.
Standard Constant Current drivers include 0-10V dimming preinstalled in an enclosure.

LABELS

Conforms To UL STD 2108 Certified To CSA STD C22.2 # 250.0
Suitable for Dry or Damp Locations, indoor use only.

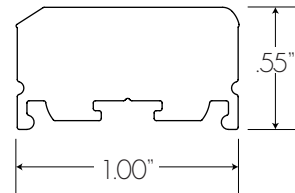
FINISH

Standard Mill Aluminum Finish.
Powder Coating to any RAL# available upon specification

WARRANTY

5 Year Limited Warranty - Covers all Scout manufactured products.
Default to manufactures warranty for all 3rd party components.

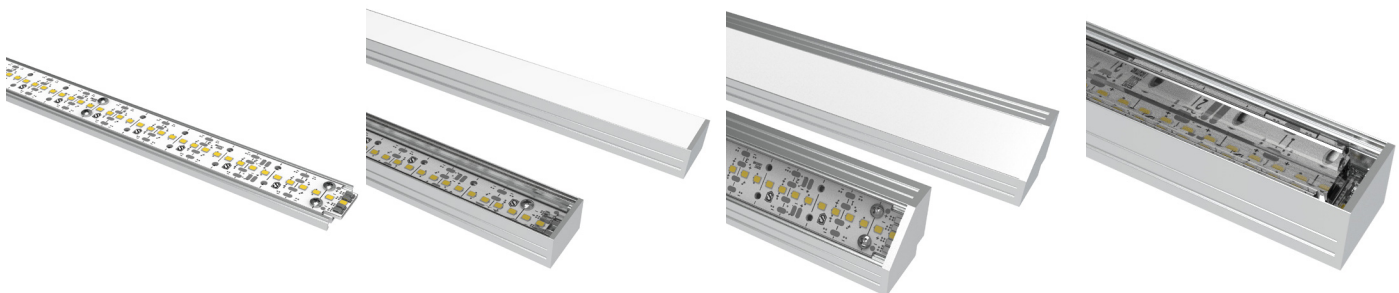
Dimensions



Optic Lens : 8% Loss of Light

OUTPUT	LOW	MEDIUM	HIGH
Lumens / Foot	414	690	1150
Watts / Foot	2.8	4.8	8.3
Lumens / Watt	147	144	138

Full Spec info on Page 9



Basic

Surface

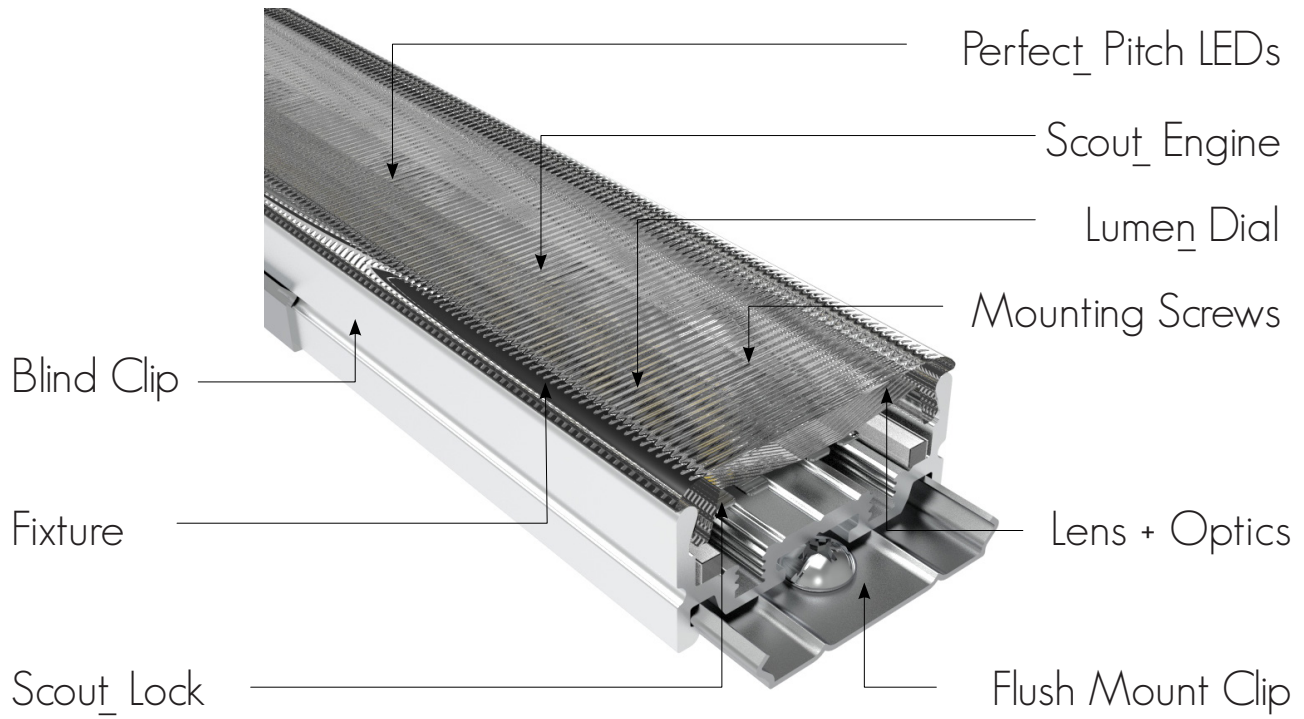
Corner

Grazer





Fixture Anatomy



Perfect_Pitch LEDS

Achieve an uncompromisable layer of architectural lighting at any intensity through LED spacing that never change with the intensity. This means no hot-spots and imaging when paired with the Milky lens.

Scout_Engine

Rigid boards Plug and Play together.

Cutttable to 1/2 Inch

Lumen_Dial

A patent pending circuit design delivers 3 separate intensities within a single engine. One engine, one pitch is the only way to simply and brilliantly bring a vision to reality.

Blind Clip

Scout's Wrap Around Blind Clip makes blind cove installation a breeze.

Also comes in Magnetic mounting

Scout_Lock

Developed with a straightforward installation process in mind, engine connectors quickly lock together. No tools are necessary even when housing in the Scout Select Channel.

Flush Mount Clip

Scout's Surface mounting clip sits flush when installed. Once installed you'll never see it again!

Also comes in Magnetic mounting

Mounting Screws

No more double sided tape!

Scout's Rigid Engines are held firmly in place with screws.

Fixture

Designed from the ground up to be a module system.

Each fixture is 100% custom to you. Pre assembled and cut to the 1/2 inch

We can powder coat to any finish you desire.

Optics

Scout offers multiple lens options for you. Frosted lens for maximum output, Milky lens for visible hot-spot free illumination, a 10 degree grazer to make those textured walls pop and 8 different extruded optics.

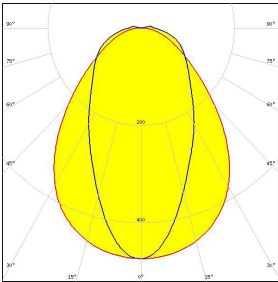




SCOUT LIGHTING

SURFACE OPTIC FIXTURE

STATIC WHITE

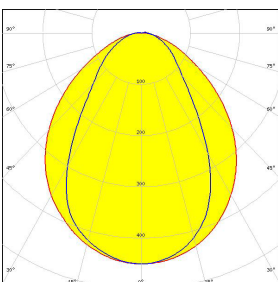
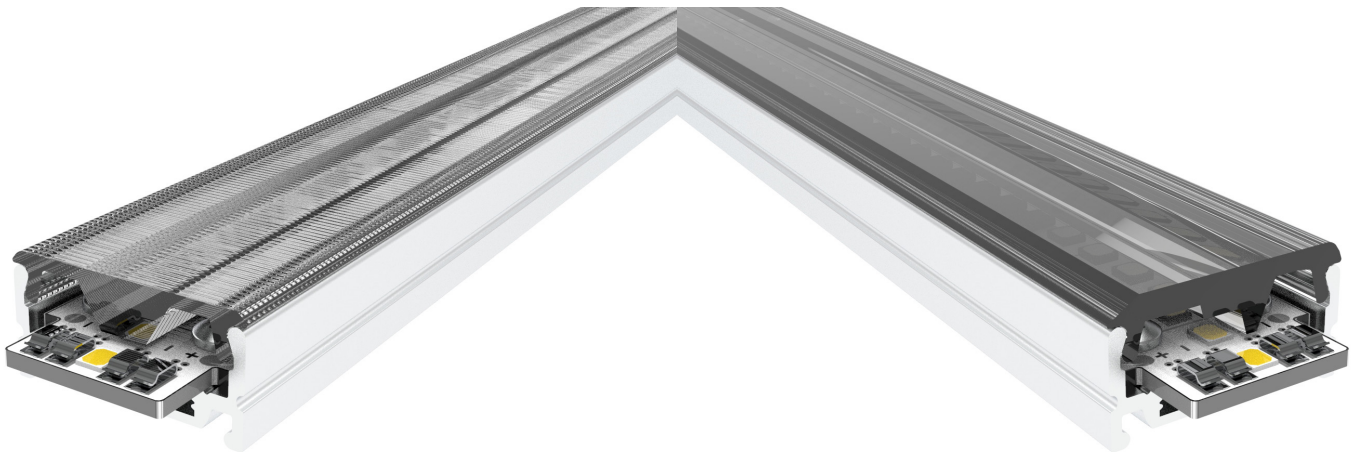
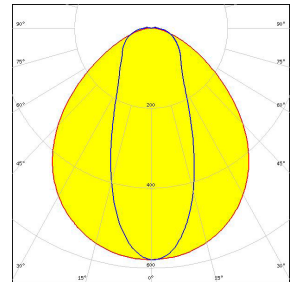


60 X 90

~60° + 90° BEAM

40 X 100

~40° + 100° OVAL BEAM

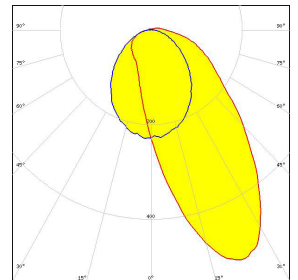


110 X 100

~110° + 100° WIDE BEAM

ASYM 25

ASYMMETRIC BEAM
FOR WALL WASHING

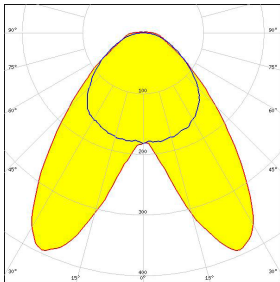
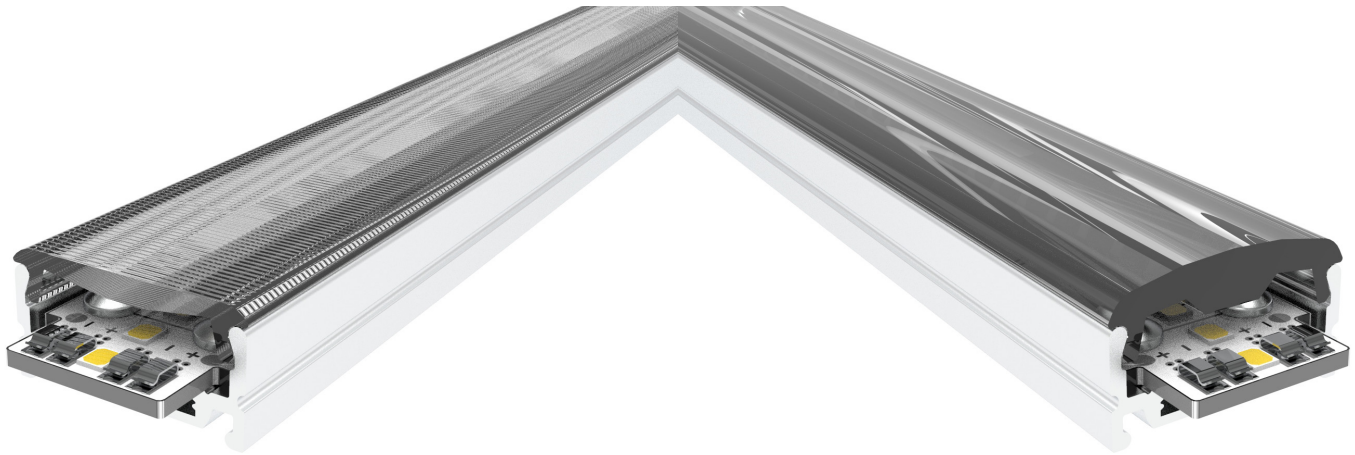




SCOUT LIGHTING

SURFACE OPTIC FIXTURE

STATIC WHITE

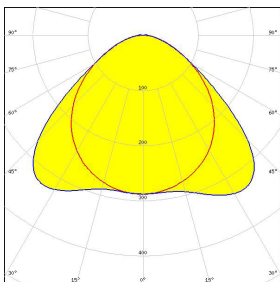
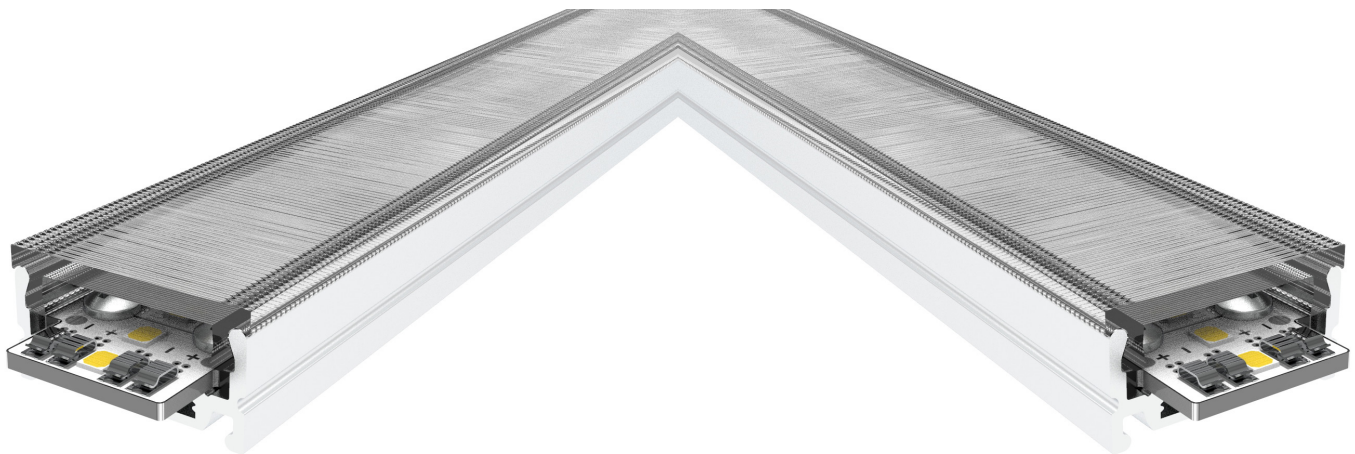
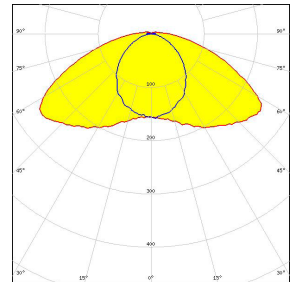


BAT 25

145 X 100

DOUBLE ASYMMETRIC BEAM

**~145° + 100°
EXTRA WIDE BEAM**

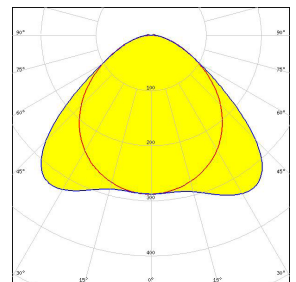


90 X 100

110 X 100

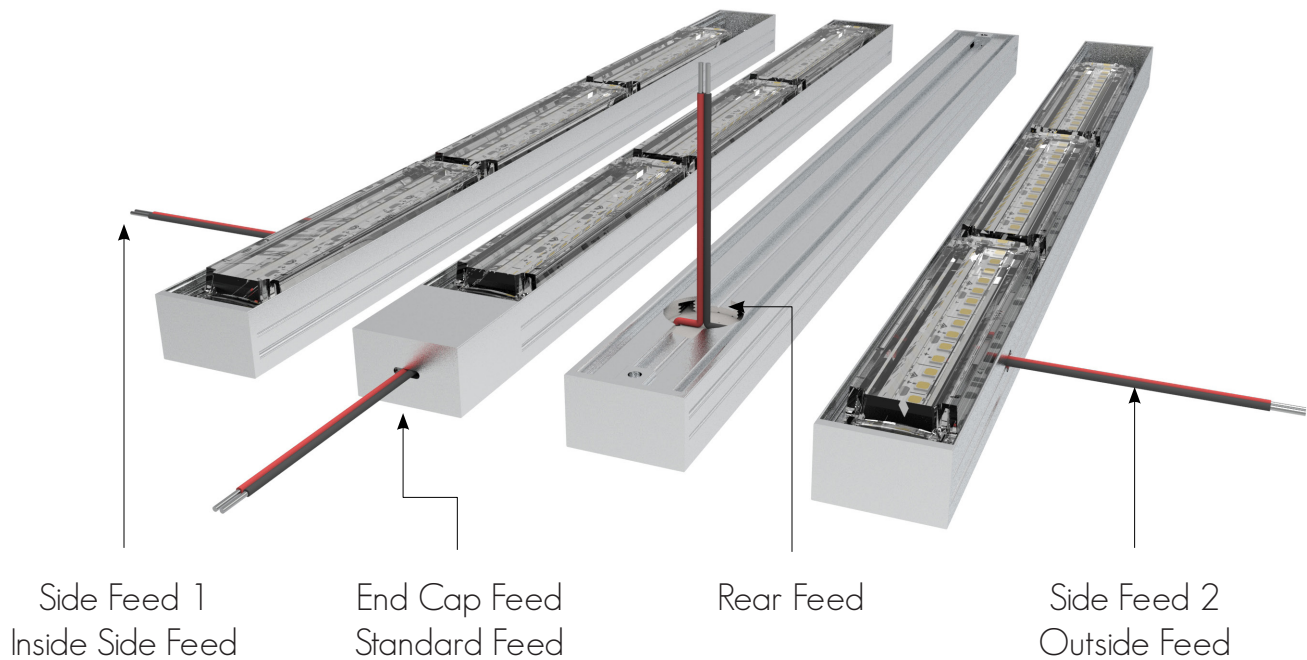
~90° + 100° WIDE BEAM

~110° + 100° WIDE BEAM

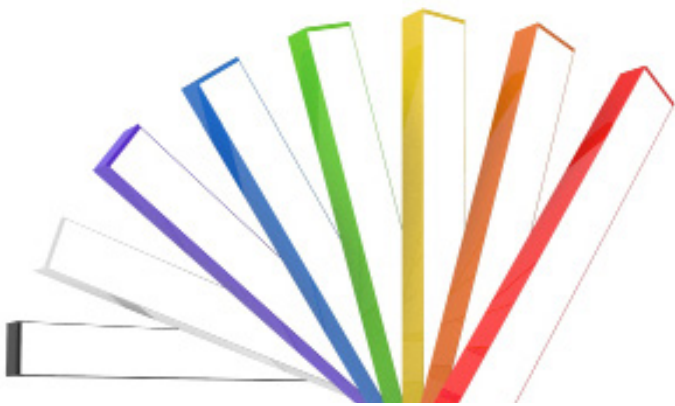




Feed Options



Finish

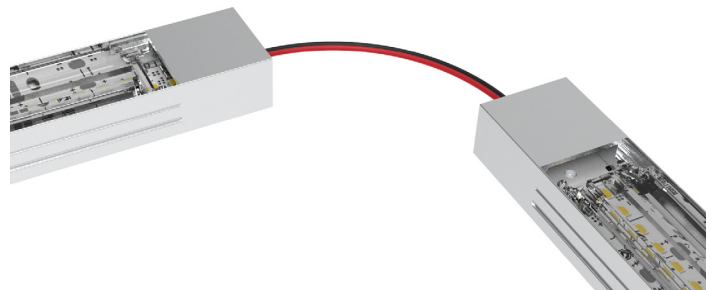


Powder Coat any Scout Fixture to any RAL #
Scout Fixtures come standard Mill Finish Aluminum

Your Fixture. Your Design. Customized.

Price Adder for Powder Coating

Jumpers

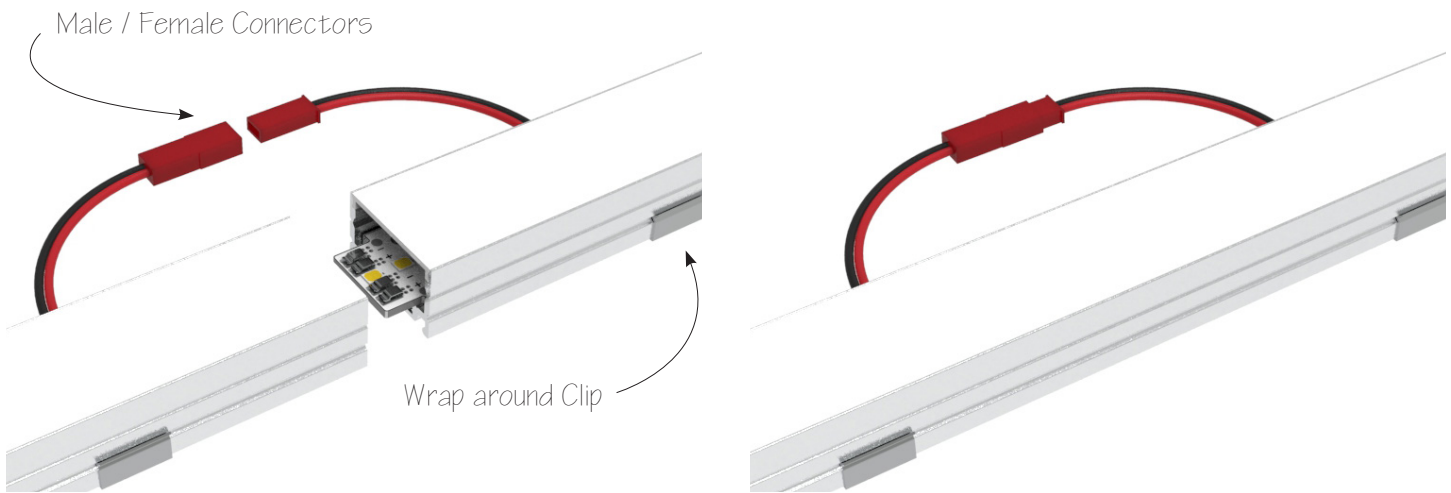


Whether you're turning an angle or daisy chaining the Scout Fixtures can be connected with any length of wire you choose.





Blind Cove Option



Scout offers a blind cove option for those hard to reach and see installs. The wrap around clip makes mounting a breeze and male / female connectors help make connections when you can't see.

Lumen Dial



Scout's propriety Scout Engine can be dialed into any lumen or wattage value.

From 1 Lumen to 1,400 per foot!





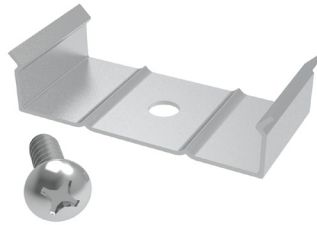
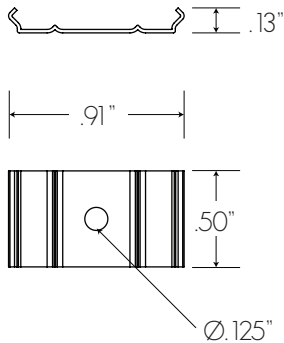
Mounting Clips



FLUSH CLIP

PART # SSM

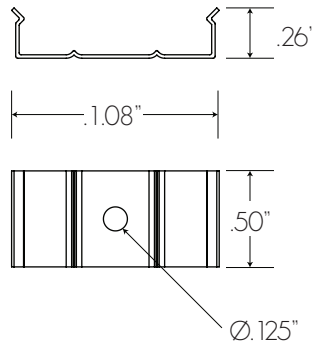
Ships with 1/2" #4 Screw
Use #1 Phillips Bit Driver



BLIND CLIP

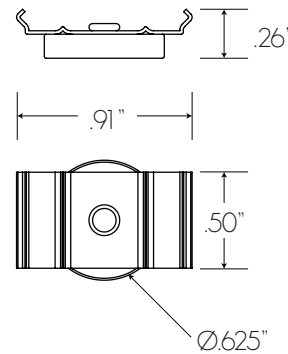
PART # SBM

Ships with 1/2" #4 Screw
Use #1 Phillips Bit Driver



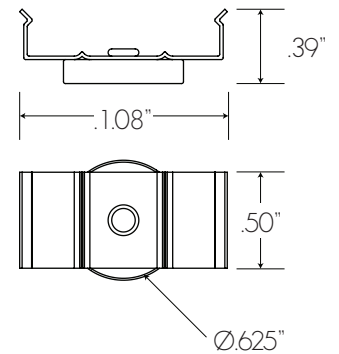
FLUSH CLIP MAGNETIC

PART # SSMMAG

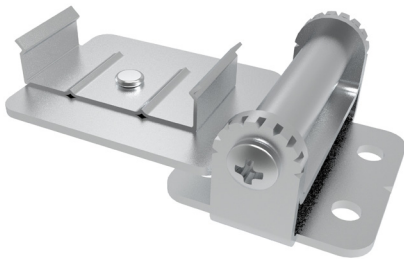


BLIND CLIP MAGNETIC

PART # SSBMAG



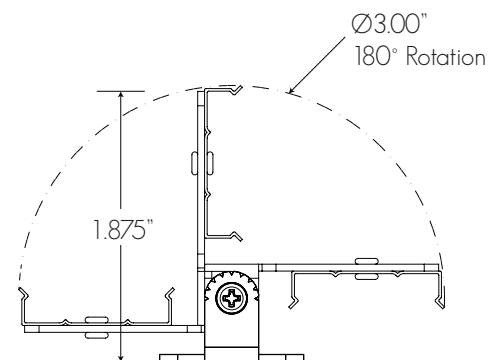
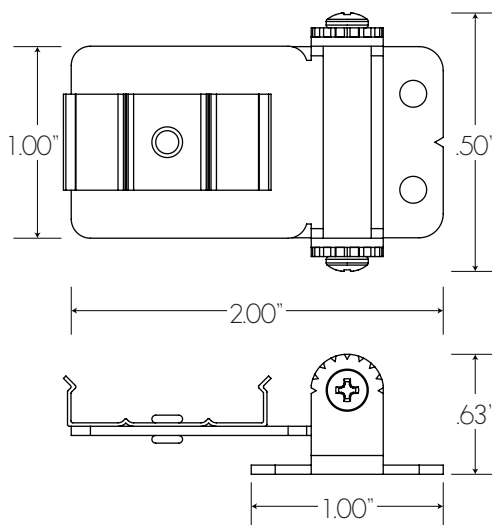
Tiltable Stand



TILTABLE STAND

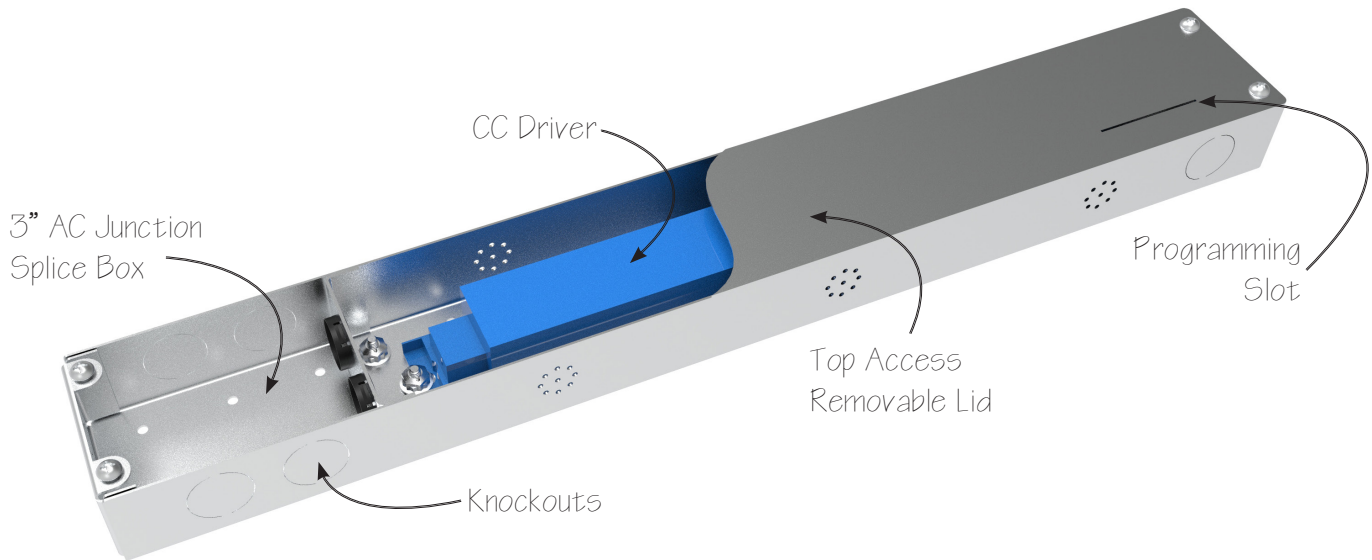
PART # SSBTILT

Ships with 1/2" #4 Screw
Use #1 Phillips Bit Driver





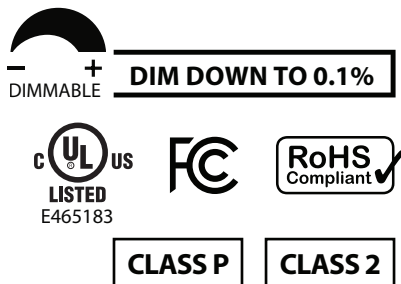
0-10 Driver + Wiring



Features

- Compliant with Title 24 Requirements
- Wireless RFID Programming - No power required
- 0-10V Dimmable - Dim Down to 0.1%
- Dim To 0 Capability
- NTC - LED Temperature Sensor
- Auxiliary Power Output
- Wide Operating Window
- CLO (constant lumen output)
- Up to 90% efficiency
- Universal Input Voltage
- UL Listed 8750, Class 2, Class P

Approvals



Load + Distance

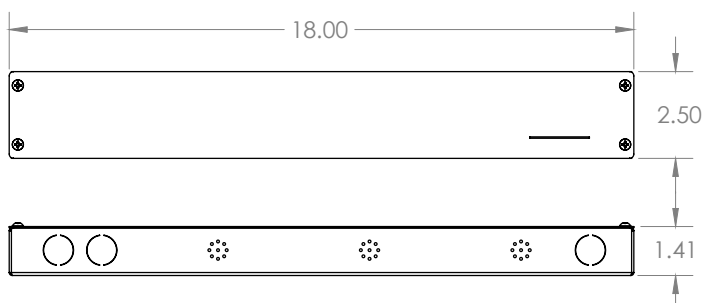
Max Distance at Full Load @ 2000 mA

18 AWG	16 AWG	12 AWG
40 Feet	60 Feet	150 Feet

Max Driver Load at 2000 mA

Low (89ma)	Medium (149ma)	High (256 ma)
22 Feet	13 Feet	7 Feet

Dimensions



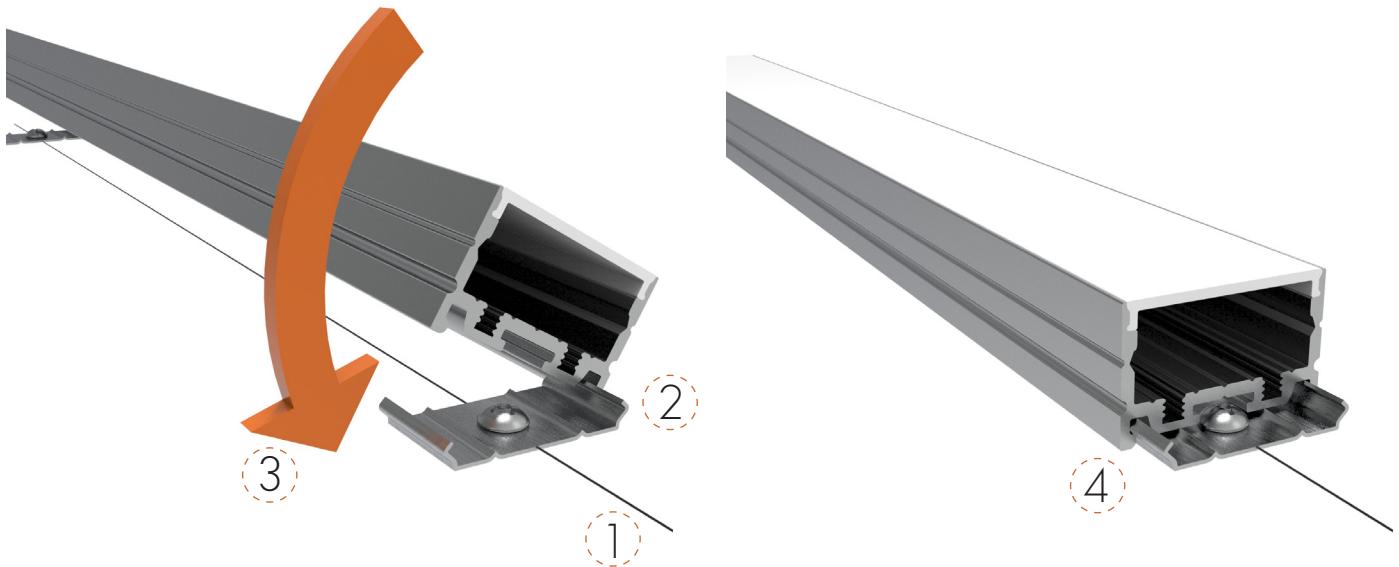
Wiring

GREEN	120 - 277 VAC 50/60HZ	DIM 0-10	GRAY (0-10 -)
BLACK (L)			PURPLE (0-10 +)
WHITE (N)		LED	BLACK (V-) RED (V+)



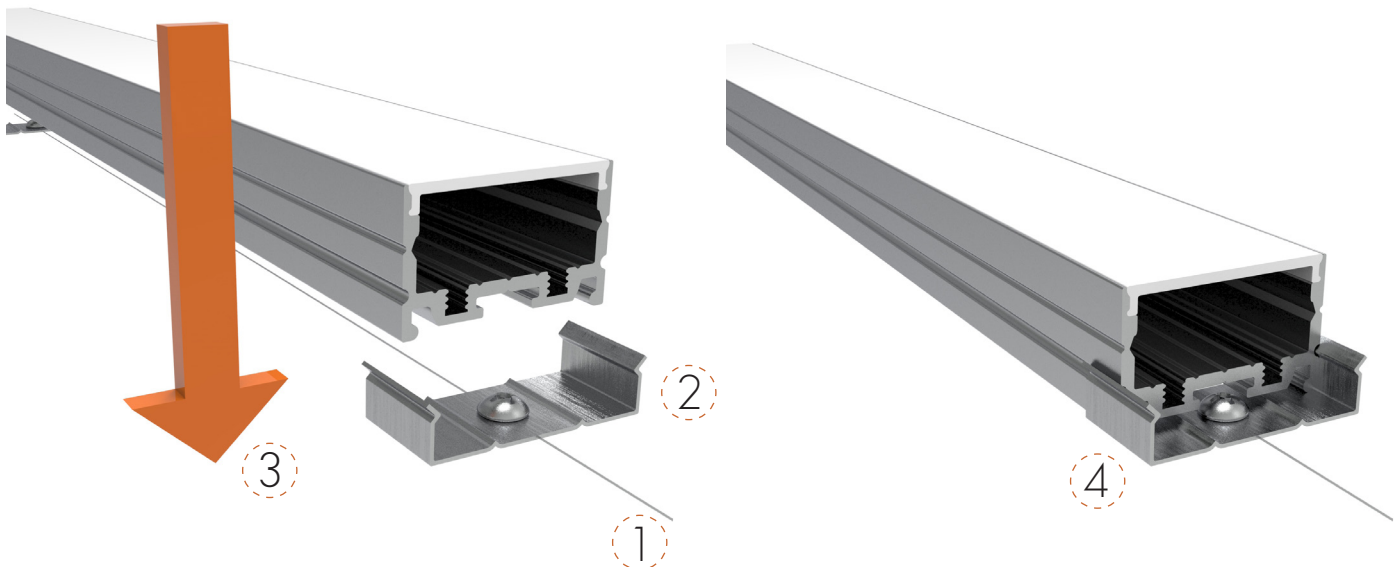


Flush Clip Install



1. Draw / Laser / Chalk a straight line and install clips on mounting plane.
2. Slide one edge of the Fixture against the clip.
3. Rotate Fixture down.
4. Snap the Fixture into the clip.

Blind Clip Install



1. Draw / Laser / Chalk a straight line and install clips on mounting plane.
2. Insert Fixture straight down into the Blind Clip.
3. Push Fixture down.
4. Snap the Fixture into the clip.



Specification Details

INTENSITY	LOW	MEDIUM	HIGH	CCT	RELATIVE LUMINOUS FLUX
Watts / Foot	2.5 W/Ft	5.0 W/Ft	10 W/Ft	2200K	82%
mA / Foot	89 mA/Ft	149 mA/Ft	256 mA/Ft	2700K	100%
Grazer Lens: Lumens/ Foot	414 Lm/Ft	690 Lm/Ft	1150 Lm/Ft	3000K	100%
Grazer Lens: Lumens/ Watt ¹	147 Lm/Wt	144 Lm/Wt	138 Lm/Wt	3500K	115%
Color Temperatures (K)	2200, 2700, 3000, 3500, 4000, 5000			4000K	118%
CRI	90+			5000K	106%
R9	50+				
MacAdams Ellipses	3 Steps				
Beam Angle ²	120 Degrees				
IP Rating	IP20 - Dry Location				
Lamp Life	50,000 Hours				
Dimming / Control ³	0-10 / POE / DMX / LUTRON				
Operating Temperature	-13°F to 122°F				
Warranty	5 Years				
Max Driver Load at 2A	22 Feet	13 Feet	7 Feet		
ETL	Conforms To UL STD 2108 - Certified To CSA STD C22.2 # 250.0				

Ordering Details

- All fixtures come standard with starter end cap feed unless otherwise specified.
- All Scout Select Fixtures come preassembled up to 8 feet long with 8" power feed.
- Any Fixture length under 8 feet long will be made as a complete fixture.
- Any Fixture length over 8 feet long will be broken into 6 foot lengths + the balance length.
I.E. A 10 Foot Fixture will be broken into 1 length @ 6 Feet and 1 @ 4 Feet.
- Fixtures daisy chain together with Scout_Lock™ Technology. See figures 1.1 and 1.2 below.
- In situations where fixtures are longer then the maximum wattage load new power will be injected from either the side or rear. Standard Injection is side Feed 1.
- All orders come with an approval drawing. Fabrication will not begin until drawing has been signed off or waived.

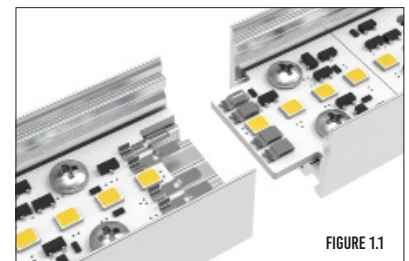


FIGURE 1.1

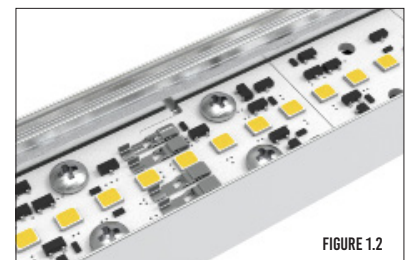


FIGURE 1.2

¹ Lumens / Watt takes into account nominal driver efficacy at full load

² Beam Angle with Milky Lens

³ Not all dimmers / drivers compatible contact factory for testing